



Felsham Mews

Felsham Road, SW15

Asking Price £900,000

Unique two bedroom Warehouse Conversion in the Heart of West Putney offering ample living accommodation arranged over two floors. Being offered chain free.



Felsham Mews

Felsham Road, SW15

- Split Level
- Two en-suite bedrooms
- Additional separate WC
- Fantastic condition throughout
- Excellent West Putney Location
- Patio area
- Living room with vaulted ceiling
- Off street parking
- Offered Chain Free



Arranged over two floors, this light and spacious warehouse conversion flat is presented in immaculate condition throughout. On the ground floor, the two large bedrooms both feature en-suite bathrooms. The lower ground floor offers a separate WC, utility room, large open plan kitchen with high-end finishes and Miele appliances. The living room benefits from a spectacular vaulted ceiling allowing light to stream in, and has direct access onto a private garden.

This property also benefits from a Share of Freehold, off street allocated parking, fantastic storage and is located in one of Putney's most sought after locations.

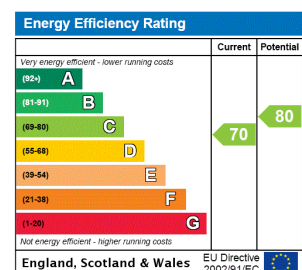
Set within one of Putney's most desirable pockets, the cafes and boutique shops of Lower Richmond Road are a stone's throw away, with the edge of the River Thames within walking distance. Convenient transport links via Putney mainline station, Putney Bridge Tube and the Thames River taxi are within easy reach, ideal for commuting into central London.

Tenure: Share of Freehold (expires 29/09/2129)

Service Charge: £3,360 p.a.

Local Authority: London Borough of Wandsworth

Council Tax Band: F



Chestertons Putney Sales

153 Upper Richmond Road

London

SW15 2TX

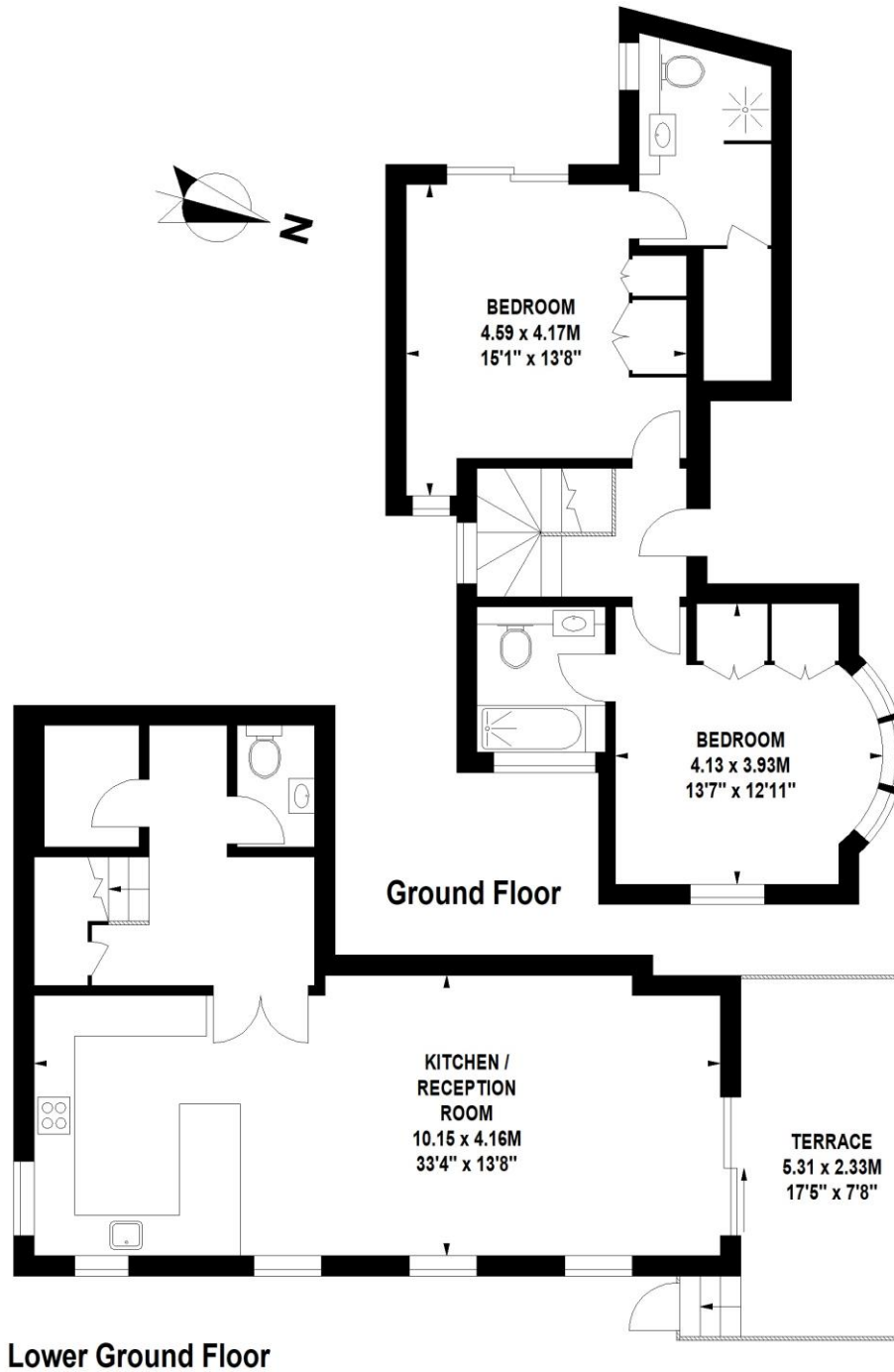
putney@chestertons.co.uk

020 8246 5959

chestertons.co.uk

Felsham Mews, SW15

Approximate Gross Internal Area 108 sq m / 1163 sq ft



Floor Plan produced for Chestertons by Mays Floorplans © . Tel 020 3397 4594

Illustration for identification purposes only, not to scale

All measurements are maximum, and include wardrobes and window bays where applicable

