



Token Yard

Putney High Street, SW15

Asking Price £850,000

A rare to the market three double bedroom mews style house, conveniently located, being set back from Putney High-Street in the heart of Putney.



Token Yard

Putney High Street, SW15

- Freehold
- Mews style house
- 2 double bedrooms and one single bedroom/study
- Large open plan ground floor
- Central Putney location
- Terrace



A rare to the market three bedroom style house, conveniently located, being set back from Putney High-Street in the heart of Putney.

As you enter the pretty little mews you are greeted with an attractive selection of uniform freehold houses. The property benefits from a front terrace area. Into the house and arranged over the ground floor is a large open plan kitchen, living and dining area. Offering incredibly flexible accommodation with modern fittings throughout.

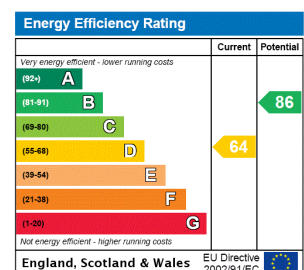
Across the upper two floors are 2 double bedrooms and one single bedroom/study again offering flexible accommodation for WFH. A bathroom on the second floor and one bedroom en-suite with a variety of storage options.

This pretty Mews House is just off Putney High Street and benefits from a wide range of restaurants, bars, shops and excellent transport links, including Putney mainline station and numerous bus routes. East Putney underground station (District Line) is also within easy walking distance. Wandsworth Park, with its green open spaces and delightful river walks, is also just a short walk away.

Tenure: Freehold

Local Authority: London Borough of Wandsworth

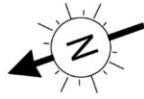
Council Tax Band: F



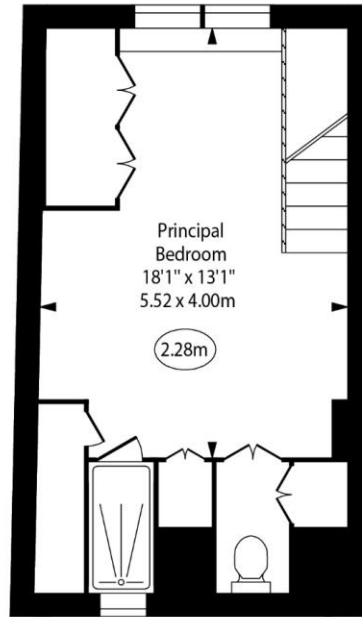
Chestertons Putney Sales

153 Upper Richmond Road
 London
 SW15 2TX
 putney@chestertons.co.uk
 020 8246 5959
 chestertons.co.uk

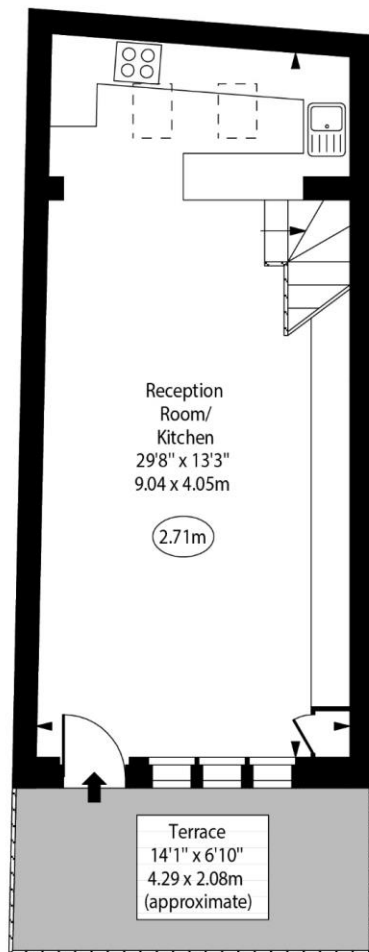
Token Yard, SW15



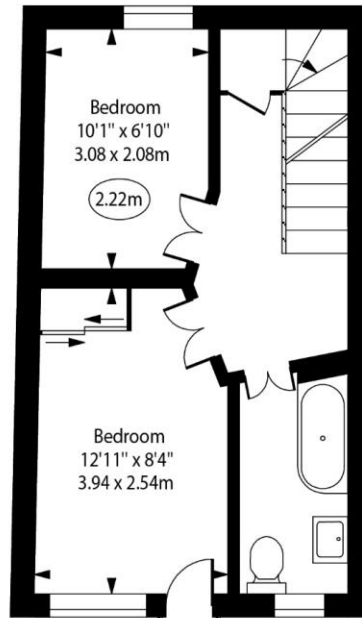
○ - Ceiling Height



Second Floor



Ground Floor



First Floor

Approx Gross Internal Area

992 Sq Ft - 92.16 Sq M

For Illustration Purposes Only - Not To Scale

