



Reed House

Durnsford Road, SW19

Asking Price £250,000

Charming and modern first floor flat in popular development. Ideally situated for transport links, Haydons Road train station (0.3 miles) or Wimbledon Park underground station (0.7 miles)



Reed House

Durnsford Road, SW19

- One Double Bedroom
- Chain Free
- Great Buy To Let Investment
- Frist Floor
- Modern Finish Throughout

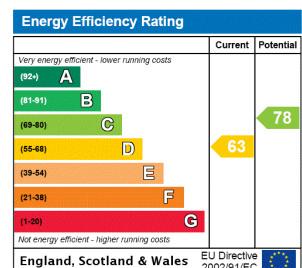


Charming and modern first floor flat in popular development opens into a small entrance hall offering access to all the accommodation and large storage cupboard housing the hot water cylinder.

The open plan living/dining/kitchen area provides a range of modern low level and eye level units and integrated appliances. The spacious double bedroom and modern bathroom are accessed from the central hallway.

Reed House is ideally situated for transport links; Haydons Road train station (0.3 miles) or Wimbledon Park underground station (0.7 miles) on the District Line. It is also a short walking distance to Wimbledon Park Station on the District Line and the open spaces of Wimbledon Park itself.

Tenure: Leasehold expires 28/12/2131
Service Charge: £3769.66 Includes; Block management and Estate costs
Ground Rent: £937.74
Local Authority: London Borough Of Merton
Council Tax Band: C

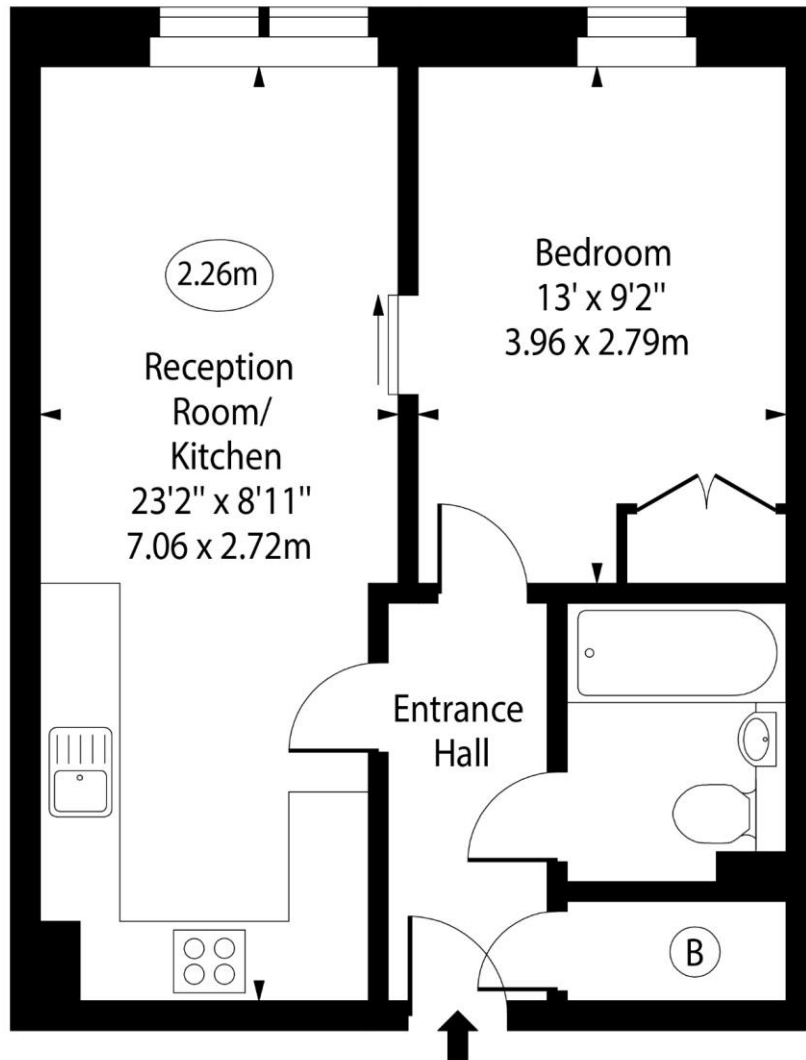


Chestertons Putney Sales

153 Upper Richmond Road
 London
 SW15 2TX
 putney@chestertons.co.uk
 020 8246 5959
 chestertons.co.uk

Reed House, SW19

○ - Ceiling Height



First Floor

Approx Gross Internal Area 440 Sq Ft - 40.88 Sq M

For Illustration Purposes Only - Not To Scale

www.goldlens.co.uk

Ref. No. 024464E

