



Ross Court

Putney Hill, SW15

Asking Price £850,000

Recently refurbished three bedroom flat of almost 1,500 sq. ft., situated in this beautifully maintained mansion block with secure gated entry. The property is beautifully presented throughout and offers great space for living and entertaining.



Ross Court

Putney Hill, SW15

- Gated development
- Modern Kitchen
- Three double bedrooms
- Two bathrooms
- Guest WC
- 1,479 Sq. Ft.
- Parking
- Garage by separate negotiation



Recently refurbished three bedroom flat of almost 1,500sq.ft, situated in this beautifully maintained mansion block with secure gated entry. The property is beautifully presented throughout and offers great space for living and entertaining.

The flat consists of a wonderfully bright and spacious double reception/dining room, with high ceilings and two feature fireplaces. There is a large eat in kitchen with integrated contemporary units, three generous double bedrooms and two wonderfully modern family bathrooms and an additional W/C. The property also benefits from a private garage, off-street parking and access to beautiful communal gardens.

Ross Court is located on Putney Hill, close to the green and open spaces of Putney Heath and Richmond Park. The shopping and transport facilities of Putney High Street are a short walk away, with East Putney Tube just 1 mile walk and Putney mainline station just 0.8 miles. There are also numerous bus links to Putney and Central London.

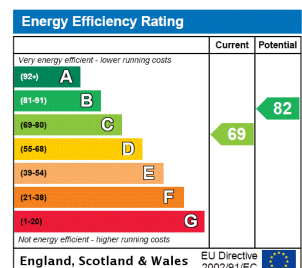
Tenure: Leasehold (expires 25/03/2972)

Service Charge: £6631.70 p.a. Includes; reserve fund, buildings insurance, maintenance of communal areas and gardens and refuse collection.

Ground Rent: No ground rent

Local Authority: London Borough of Wandsworth

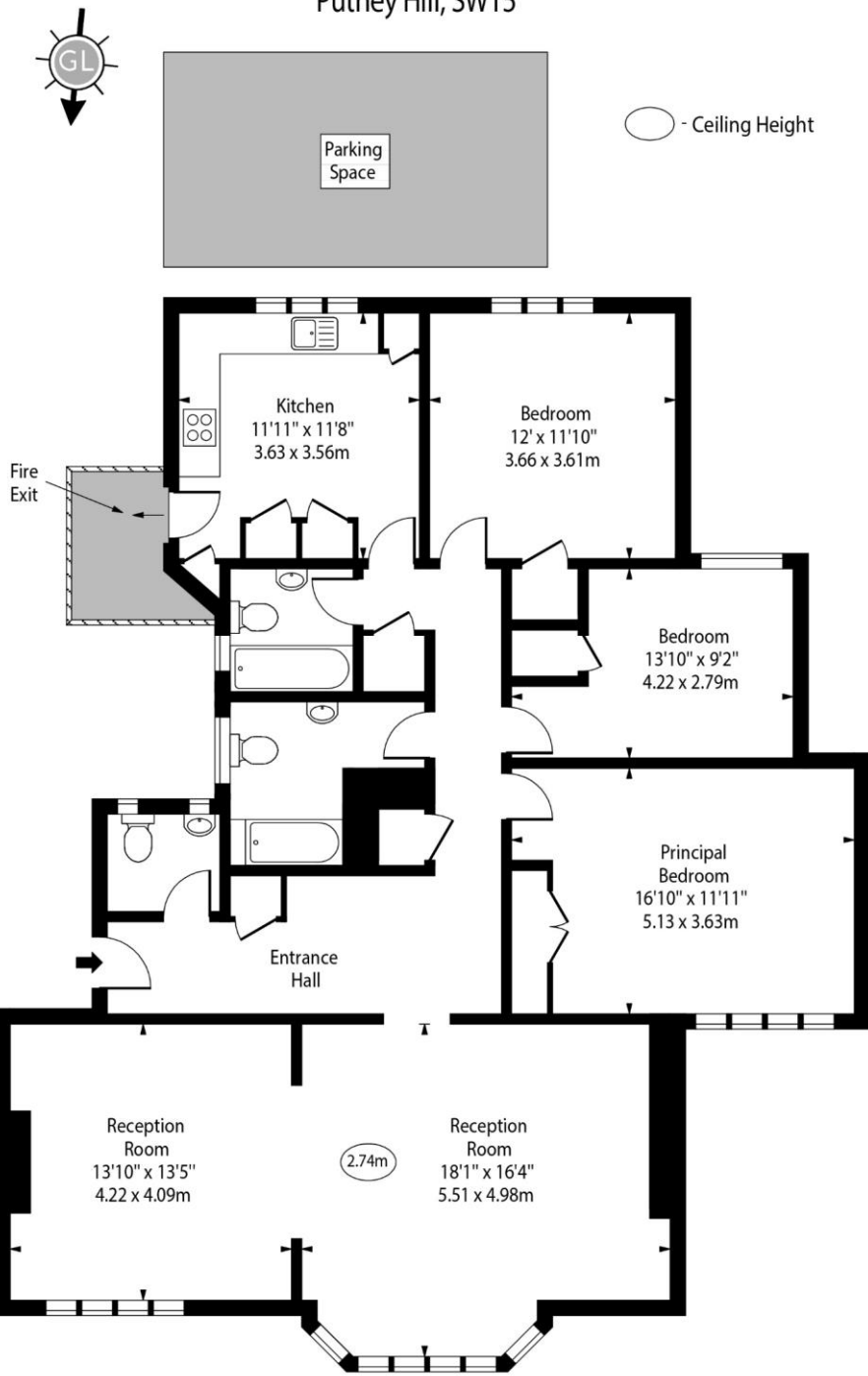
Council Tax Band: F



Chestertons Putney Sales

153 Upper Richmond Road
 London
 SW15 2TX
 putney@chestertons.co.uk
 020 8246 5959
 chestertons.co.uk

Ross Court,
Putney Hill, SW15



First Floor

Approx Gross Internal Area 1479 Sq Ft - 137.40 Sq M

For Illustration Purposes Only - Not To Scale
www.goldlens.co.uk
Ref. No. 024361E