



# Avershaw House

Chartfield Avenue, SW15

Offers in excess of  
£157,000

35% SHARED OWNERSHIP

Modern one bed flat with a private patio and access to communal gym and roof terrace. Situated in a central location on Putney Hill close to Putney Station, the High Street and Putney Heath.

**CHESTERTONS**



# Avershaw House

Chartfield Avenue, SW15

- Open Plan Living
- Private Patio
- Modern Finish
- Gym
- Concierge
- Roof Terrace





35% SHARED OWNERSHIP  
 Rent: £723.66 pcm Service Charge: £282.79 pcm  
 Full price £450,000,

Modern one bed flat with a private patio and access to communal gym and roof terrace. Situated in a central location on Putney Hill close to Putney Station, the High Street and Putney Heath.

The property feels light and spacious with large windows into the open plan living room / kitchen and bedroom. The living area opens directly on to a private patio and communal garden.

Putney Square is a luxury residential development arranged around a central landscaped courtyard. Amenities include, concierge services, a residents' gym, communal roof terrace with expansive views over London and landscaped gardens with an elegant water feature.

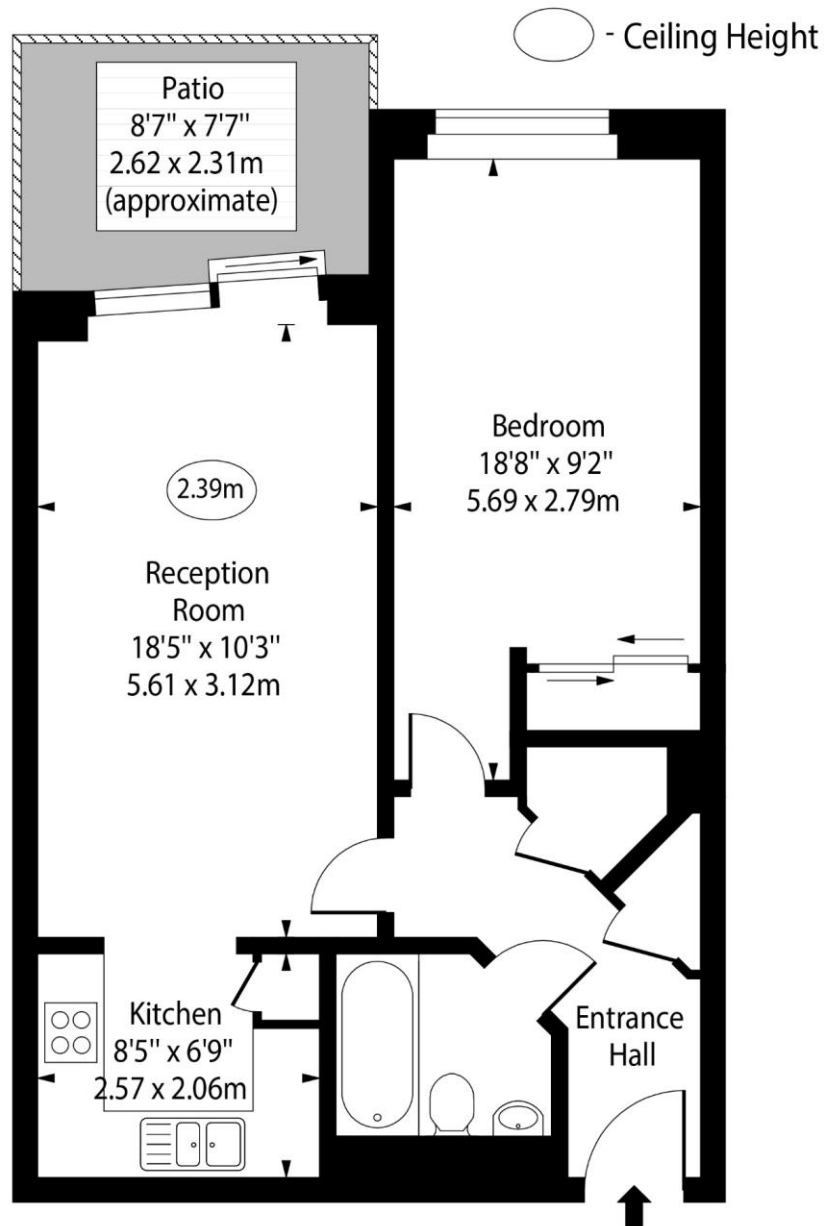
**Tenure:** Leasehold (Expiry: 27/12/2165)  
**Service Charge:** £3,393.48 p.a. Includes; Examination fees, external agent charges and management fee  
**Ground Rent:** Peppercorn (if its 100% owned it is £250)  
**Local Authority:** London Borough of Wandsworth  
**Council Tax Band:** E

Energy Efficiency Rating		Current	Potential
Very energy efficient - lower running costs	A		
(92-100)	B		
(81-91)	C	78	78
(69-80)	D		
(55-68)	E		
(39-54)	F		
(21-38)	G		
Not energy efficient - higher running costs			
England, Scotland & Wales		EU Directive 2002/91/EC	

### Chestertons Putney Sales

153 Upper Richmond Road  
 London  
 SW15 2TX  
 putney@chestertons.co.uk  
 020 8246 5959  
 chestertons.co.uk

Avershaw House,  
Chartfield Avenue, SW15



Lower Ground Floor

Approx Gross Internal Area      556 Sq Ft - 51.65 Sq M

For Illustration Purposes Only - Not To Scale

[www.goldlens.co.uk](http://www.goldlens.co.uk)

Ref. No. 023623E

