



Burke Close

London, SW15

Asking Price £600,000

This excellent three bedroom freehold terrace house in the ever popular Burke Close, offers three double bedrooms

and spacious West facing garden.



Burke Close

London, SW15

- Three double bedrooms
- West facing private garden
- Rear access
- Barnes station 0.7 miles
- No Chain



This excellent three bedroom freehold terrace house in the ever popular Burke Close, offers three double bedrooms and spacious West facing garden.

As you enter into the property on the ground floor you have a guest WC and ample storage before heading into the fitted kitchen that leads onto a dining space and large open living room. Sliding doors open directly onto the spacious West facing garden with rear access and store room. The first floor comprises 3 double bedrooms and a family bathroom.

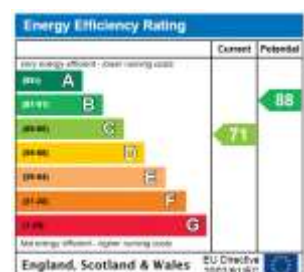
Located in Burke Close this property is well served by local amenities and transport with regular buses along the Upper Richmond Road and Barnes Station just 0.7 miles. The property is close to Green spaces of Richmond Park and Barnes Common.

No onward chain.

Tenure: Freehold

Local Authority: London Borough of Wandsworth

Council Tax Band: D

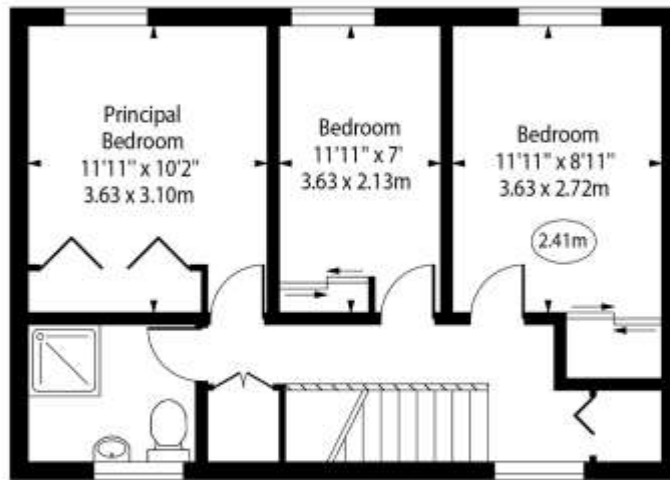


Chestertons Putney Sales

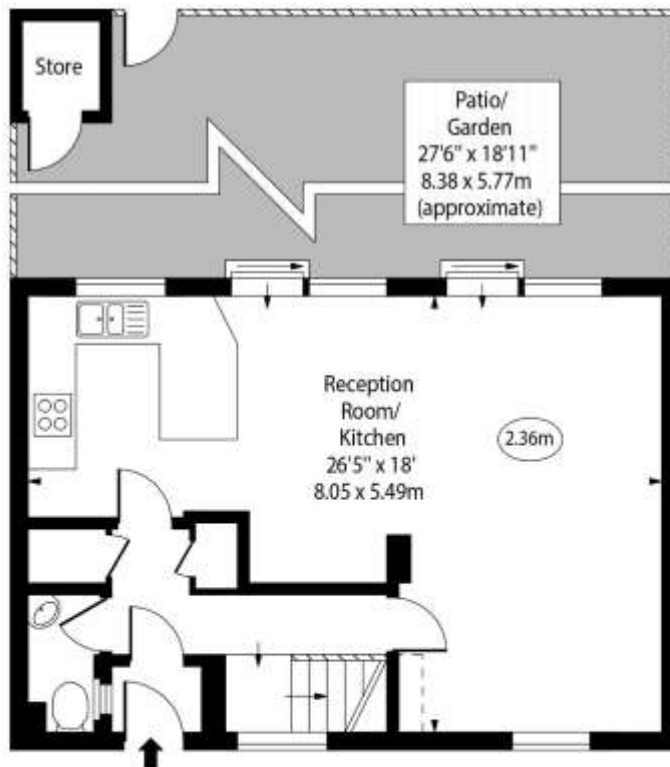
153 Upper Richmond Road
 London
 SW15 2TX
 putney@chestertons.co.uk
 020 8246 5959
 chestertons.co.uk

Burke Close, SW15

○ - Ceiling Height



First Floor



Ground Floor

Approx Gross Internal Area 968 Sq Ft - 89.93 Sq M

For Illustration Purposes Only - Not To Scale

www.goldlens.co.uk

Ref. No. 024270E