



Wildcroft Manor

Wildcroft Road, SW15

Offers in excess of
£950,000

A particularly spacious flat with over 1600 sq. ft. in the ever popular Wildcroft Manor. The property is set in a favourable position on an upper floor in the quieter corner of the development facing plenty of greenery and gardens.

CHESTERTONS



Wildcroft Manor

Wildcroft Road, SW15

- Very spacious
- Favourably positioned in quiet corner of development
- Surrounded by the greenery of Putney Heath
- Residents parking
- Gorgeous gardens
- Lovely position near Telegraph pub
- 424 bus route provides access to Putney & Fulham
- Garage available for purchase vis separate negotiation



A particularly spacious flat with over 1600 sq. ft. in the ever popular Wildcroft Manor. This charming property with most of its original features retained is set in a favourable position being on an upper floor in the quieter corner of the development facing plenty of greenery and gardens and having double-aspect rooms.

The accommodation offers four bedrooms, a spacious living room surrounded by greenery and with pleasant views over the gardens, two bathrooms, a gorgeous dining room plus a kitchen with a central island and a utility room. There is plenty of storage throughout.

The current owners have taken excellent care of the property so it is offered in very good move-in condition.

Wildcroft Manor is a lovely estate that is exceptionally well managed. It is always sought after due to its green surroundings and quiet position in Putney Heath. It offers residents a tranquil environment but there are bus routes just outside leading to the likes of Putney and Fulham. The Telegraph pub is a real local favourite just outside of the estate.

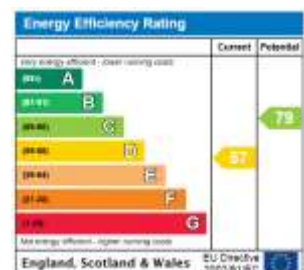
Tenure: Leasehold (expiry: 01/04/2968) Plus Share of Freehold

Service Charge: £10145.37 Central heating, hot and cold water, water rates, portorage, structural buildings insurance, gardeners,

Ground Rent: peppercorn

Local Authority: Wandsworth

Council Tax Band: G



Chestertons Putney Sales

153 Upper Richmond Road

London

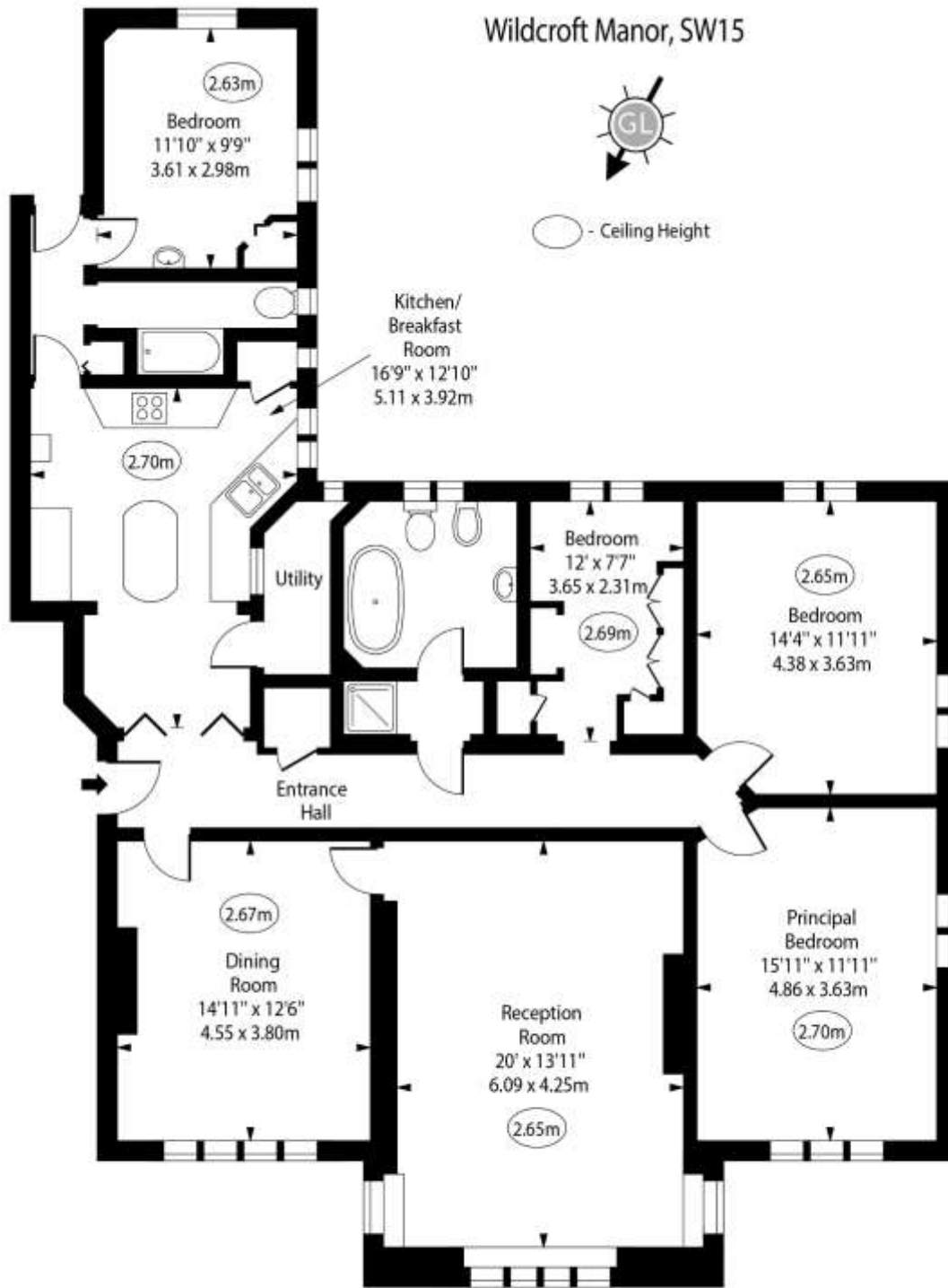
SW15 2TX

putney@chestertons.co.uk

020 8246 5959

chestertons.co.uk

Wildcroft Manor, SW15



Second Floor

Approx Gross Internal Area 1647 Sq Ft - 153.01 Sq M

For Illustration Purposes Only - Not To Scale

www.goldlens.co.uk

Ref. No. 017786R

