



# Disraeli Road

London, SW15

Asking Price £1,895,000

A beautifully refurbished and remodelled four bedroom family home situated in a prime central Putney location.



# Disraeli Road

London, SW15

- Spacious period family home
- Central Putney location
- Four double bedrooms
- Two bathrooms
- Extended kitchen/family room
- Double reception room
- Landscaped garden
- Large cellar
- Air Conditioning
- Close to transport links



On the ground floor there is a large double reception room with separate dining space, and a wealth of period features. The property has been extended on the ground floor to create a fantastic, kitchen/family room with bespoke/custom designed and installed fitted storage as well as the addition of large crittal style doors which make this an incredibly light and airy space. These open out to the private landscaped rear garden which is perfect for entertaining and al fresco dining. There is a downstairs w.c. and access to a large cellar which could be developed further subject to the usual consents.

On the upper levels there are four large double bedrooms (three offering bespoke fitted storage), and two stylish bathrooms, the main bathroom also benefitting from a separate shower.

Additional benefits include a 'Qooker' tap, air conditioning in the bedrooms and kitchen offering both heating & cooling, along with under floor heating in the kitchen and bathrooms.

The property benefits from an implemented planning permission to convert the loft into a master suite with en-suite, application number 2021/2704

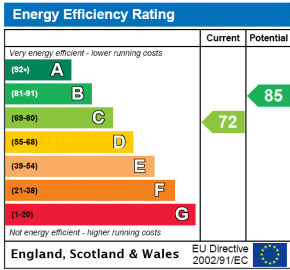
Disraeli Road offers ease of access to Putney's bustling High Street, transport links via Putney Mainline Station and East Putney Underground, and is just a short walk to the River Thames and Wandsworth Park.

The outstanding Brandlehow primary school is also close by.

**Tenure:** Freehold

**Local Authority:** Wandsworth

**Council Tax Band:** G



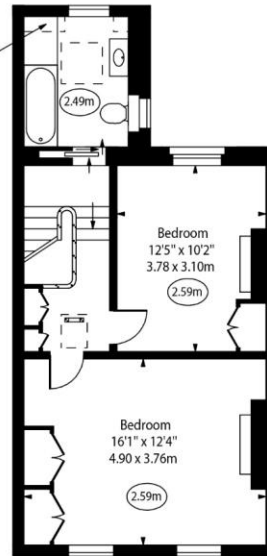
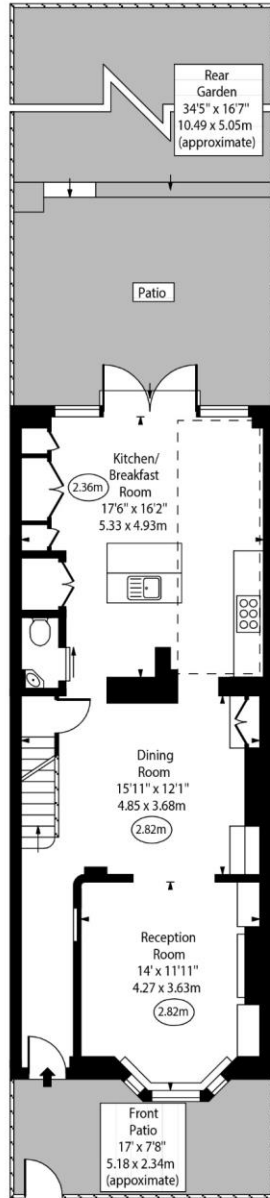
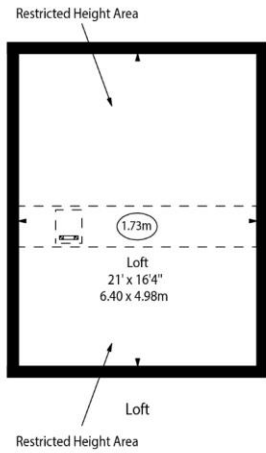
**Chestertons Putney Sales**

153 Upper Richmond Road  
 London  
 SW15 2TX  
 putney@chestertons.co.uk  
 020 8246 5959  
 chestertons.co.uk

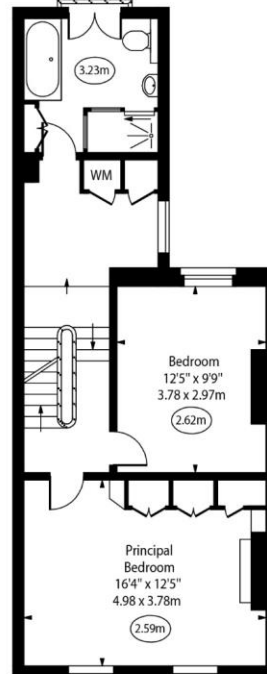
Disraeli Road, SW15

○ - Ceiling Height

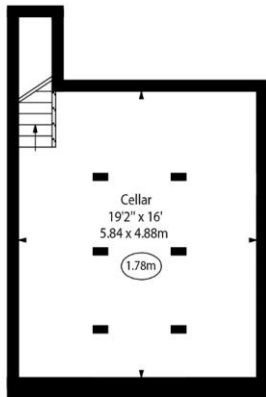
Restricted Height Area



Second Floor



First Floor



Cellar

Ground Floor

Approx Gross Internal Area 2073 Sq Ft - 192.58 Sq M

(Including Cellar)

Approx. Floor Area Including Restricted Heights 2078 Sq Ft - 193.05 Sq M

(Including Cellar)

(Excluding Loft)

Loft Area 343 Sq Ft - 31.86 Sq M

For Illustration Purposes Only - Not To Scale

www.goldlens.co.uk

Ref. No. 021784M

Chesterton Global Ltd trading as Chestertons for themselves and for the vendor of this property whose agents they are, give notice that (i) these particulars do not constitute any part of an offer or contract, (ii) all statements contained within these particulars are made without responsibility on the part of Chestertons or the vendor, (iii) whilst made in good faith, none of the statements contained within these particulars are to be relied upon as a statement or representation of fact, (iv) any intending purchasers must satisfy themselves by inspection or otherwise as to the correctness of each of the statements contained within these particulars, (v) the vendor does not make or give either Chestertons or any person in their employment any authority to make or give representation or warranty whatsoever in relation to this property. Wide angle lenses may be used. ©Copyright Chestertons | Chesterton Global Ltd | Registered Office 40 Connaught Street, Hyde Park, London W2 2AB Registered Company Number 05334580.



This paper is 100% recyclable