



# West Hill

London, SW15

Asking Price £600,000

This expansive three bed flat is located on the first floor of this pretty period conversion, measuring over 830 sq. ft. of living accommodation, and boasting a large communal gardens and allocated Parking.



# West Hill

London, SW15

- Period Conversion
- Large Reception Room
- High Ceilings
- First Floor
- Large Communal Gardens
- EPC rating C
- Allocated Parking Space
- East Putney 0.8 Miles
- Putney Station 0.9 Miles



This expansive flat is located on the first floor of this pretty period conversion, measuring over 830 sq. ft. of living accommodation, and boasting a large communal gardens and allocated Parking.

Benefiting from large, light filled rooms with high ceilings offer flexible accommodation, with three bedrooms, family bathroom, separate kitchen with built in breakfast bar and a beautiful reception room with fantastic space to both relax and entertain.

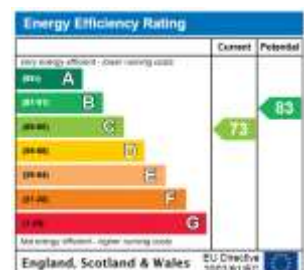
The property is within easy reach of East Putney underground station ( 0.8 miles ) as well as Putney Station ( 0.9 miles ), as well as the A3 for motorists. There are also many bus routes available from West Hill. Close by are many green spaces including Putney Heath, Wimbledon Common and the beautiful Richmond Park.

**Tenure:** Leasehold expires 18/06/3023

**Service Charge:** 1,645.02 p.a. covers general maintenance and repairs

**Local Authority:** London Borough of Wandsworth

**Council Tax Band:** E



**Chestertons Putney Sales**

153 Upper Richmond Road

London

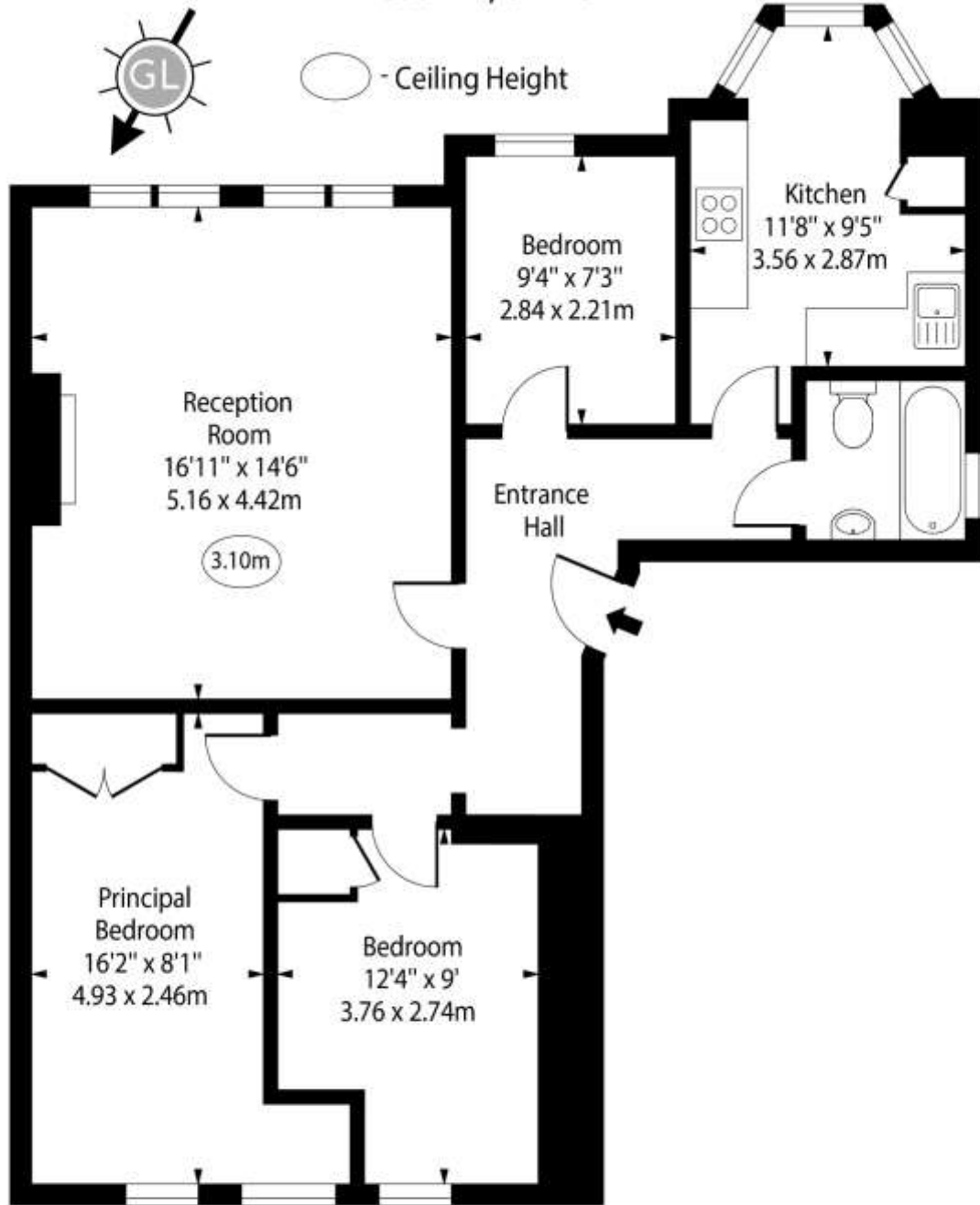
SW15 2TX

putney@chestertons.co.uk

020 8246 5959

chestertons.co.uk

# West Hill, SW15



First Floor

Approx Gross Internal Area 834 Sq Ft - 77.39 Sq M

For Illustration Purposes Only - Not To Scale

[www.goldlens.co.uk](http://www.goldlens.co.uk)

Ref. No. 024208E