



Harwood Court

Upper Richmond Road, SW15

Asking Price £230,000

A bright studio flat in this popular historic Art Deco building, within easy reach of Putney town centre and with plenty of amenities on the doorstep. Residents also benefit from communal gardens and permit parking.



Harwood Court

Upper Richmond Road, SW15

- Bright and airy
- Residents parking
- Amenities on the doorstep - shops, cafes etc
- Upper floor in secure building
- South-facing aspect
- Walking distance to Putney

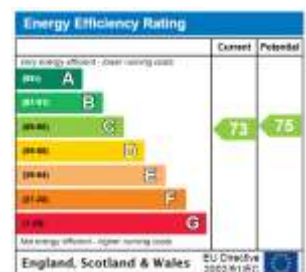


Located on an upper floor in a secure, popular and historic Art Deco building, this bright studio flat has plenty of amenities on the doorstep and is only 0.7 miles to Putney town centre for anything extra you may need. This cleverly designed south-facing flat boasts a sizeable kitchen with wood worktops, a breakfast bar and has living space for a fold-down bed and sofa. There is also a built-in workspace and storage.

Built in the 1930s the original residences housed Doctors and Nurses, which could help explain why there are lovely communal gardens and spaces. The block has an historic and lovely character and is situated beside shops, pubs and cafes, making it a lovely area to gather with friends on the weekend.

Just 0.7 miles to Putney town, you have popular bus routes, a train station and East Putney District line tube station giving you access to the broader London area.

Tenure: Leasehold expires 02/09/2109
 Service Charge: £1169.85 incl building insurance
 Ground Rent: Peppercorn
 Local Authority: Wandsworth
 Council Tax Band: B

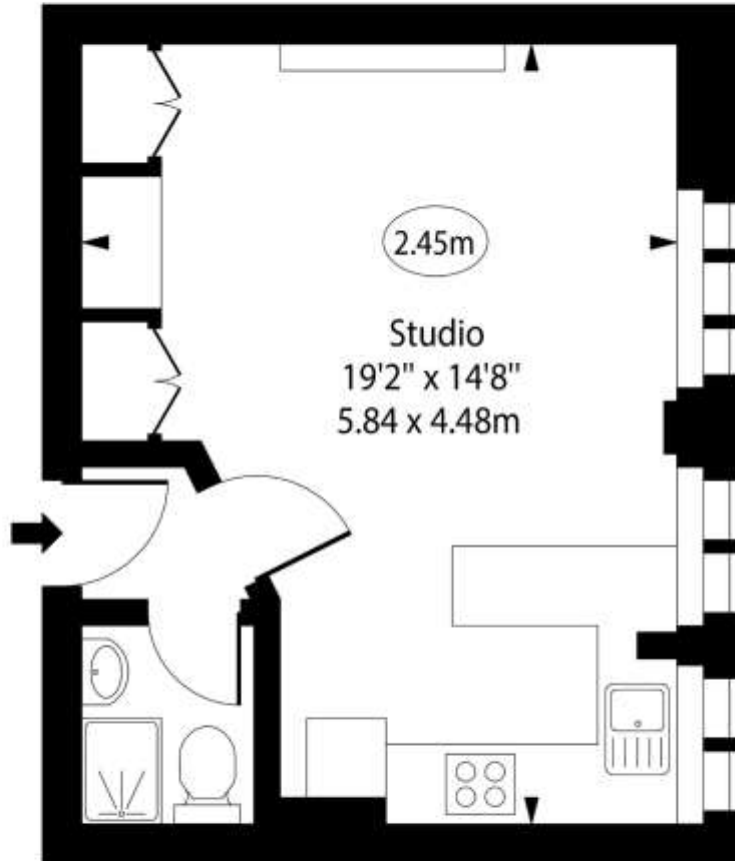
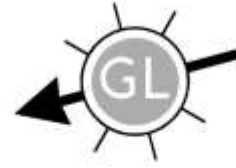


Chestertons Putney Sales

153 Upper Richmond Road
 London
 SW15 2TX
 putney@chestertons.co.uk
 020 8246 5959
 chestertons.co.uk

Harwood Court, SW15

○ - Ceiling Height



Second Floor

Approx Gross Internal Area 284 Sq Ft - 26.38 Sq M

For Illustration Purposes Only - Not To Scale

www.goldlens.co.uk

Ref. No. 020195R