



Avershaw House

Chartfield Avenue, SW15

Asking Price £450,000

Modern one bed flat with a private patio and access to communal gym and roof terrace. Situated in a central location on Putney Hill close to Putney Station, the High Street and Putney Heath.

CHESTERTONS



Avershaw House

Chartfield Avenue, SW15

- Open Plan Living
- Private Patio
- Modern Finish
- Gym
- Concierge
- Roof Terrace



Modern one bed flat with a private patio and access to communal gym and roof terrace. Situated in a central location on Putney Hill close to Putney Station, the High Street and Putney Heath.

The property feels light and spacious with large windows into the open plan living room / kitchen and bedroom. The living area opens directly on to a private patio and communal garden.

Putney Square is a luxury residential development arranged around a central landscaped courtyard. Amenities include, concierge services, a residents' gym, communal roof terrace with expansive views over London and landscaped gardens with an elegant water feature.

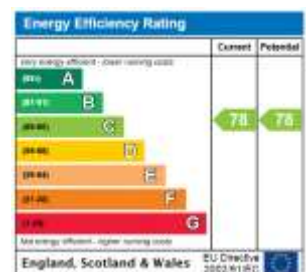
Tenure: Leasehold (Expiry 27/12/2165)

Service Charge: £3,393.48 p.a. includes: examination fees, external agent charges and management fee – **awaiting confirmation**

Ground Rent: Peppercorn (if 100% owned ground rent will be £250)

Local Authority: London Borough of Wandsworth

Council Tax Band: E



Chestertons Putney Sales

153 Upper Richmond Road

London

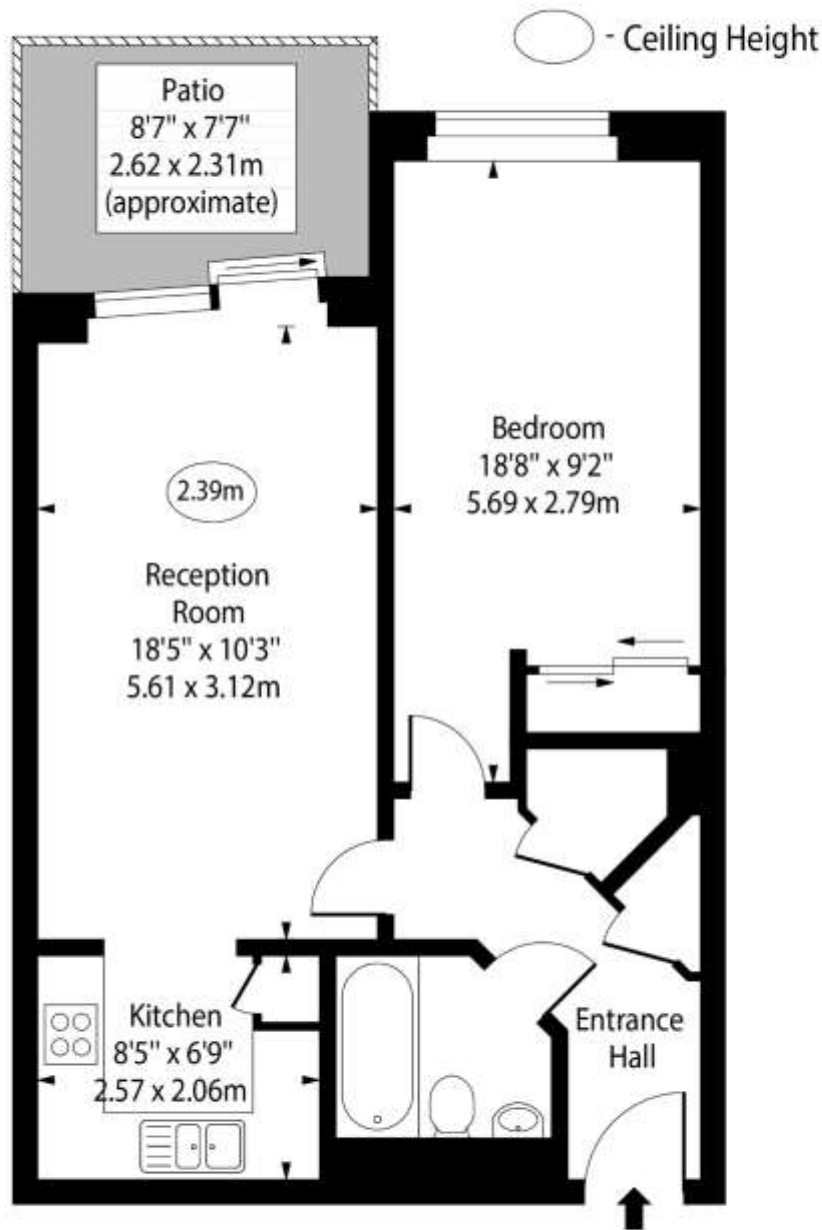
SW15 2TX

putney@chestertons.co.uk

020 8246 5959

chestertons.co.uk

Avershaw House, Chartfield Avenue, SW15



Lower Ground Floor

Approx Gross Internal Area 556 Sq Ft - 51.65 Sq M

For Illustration Purposes Only - Not To Scale

www.goldlens.co.uk

Ref. No. 023623E