



# Roehampton Close

London, SW15

Asking Price £630,000

A sympathetically modernised two-bedroom Art Deco apartment is set within a fabulously secluded enclave with a West-facing balcony.

CHESTERTONS



# Roehampton Close

London, SW15

- Beautifully finished throughout
- Two double bedrooms
- West facing balcony
- Off street parking
- Large entrance hall
- On-site porter
- Spacious separate reception room
- Garage available via separate negotiation





A sympathetically modernised two-bedroom Art Deco apartment is set within a fabulously secluded enclave with a West-facing balcony.

Purposely designed around the elegant and imposing hallway, the generously proportioned accommodation further benefits from high ceilings and is solidly built. Offering two bedrooms, both with built in storage options, family bathroom with underfloor heating, shower and bathtub, a large separate kitchen with underfloor heating, spacious living room providing access to the West-facing balcony

The secluded and mature grounds are fastidiously maintained, there is a West-facing balcony overlooking the courtyard and Copper Beech tree as well as off street car parking. There are some lovely design touches in the apartment and shared hallways, which are emblematic of the palpable quality, and attention to detail with which the estate has been built and lovingly maintained in subsequent years. Also supported by a porter.

A garage is available via separate negotiation.

Situated within easy reach of the ever-popular Roehampton Club, and excellent local schools, and plentiful green space (including Putney Heath, Barnes Common and Richmond Park) Roehampton Close has it all, as well being a short walk from Barnes Rail Station.

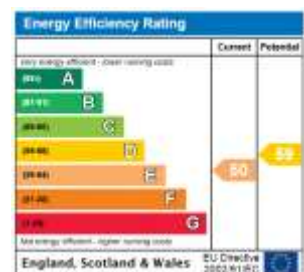
**Tenure:** Leasehold expires 31/10/2158

**Service Charge:** £4,060 p.a. includes sinking funds

**Ground Rent:** tbc

**Local Authority:** London Borough of Wandsworth

**Council Tax Band:** E



*Chestertons Putney Sales*

153 Upper Richmond Road

London

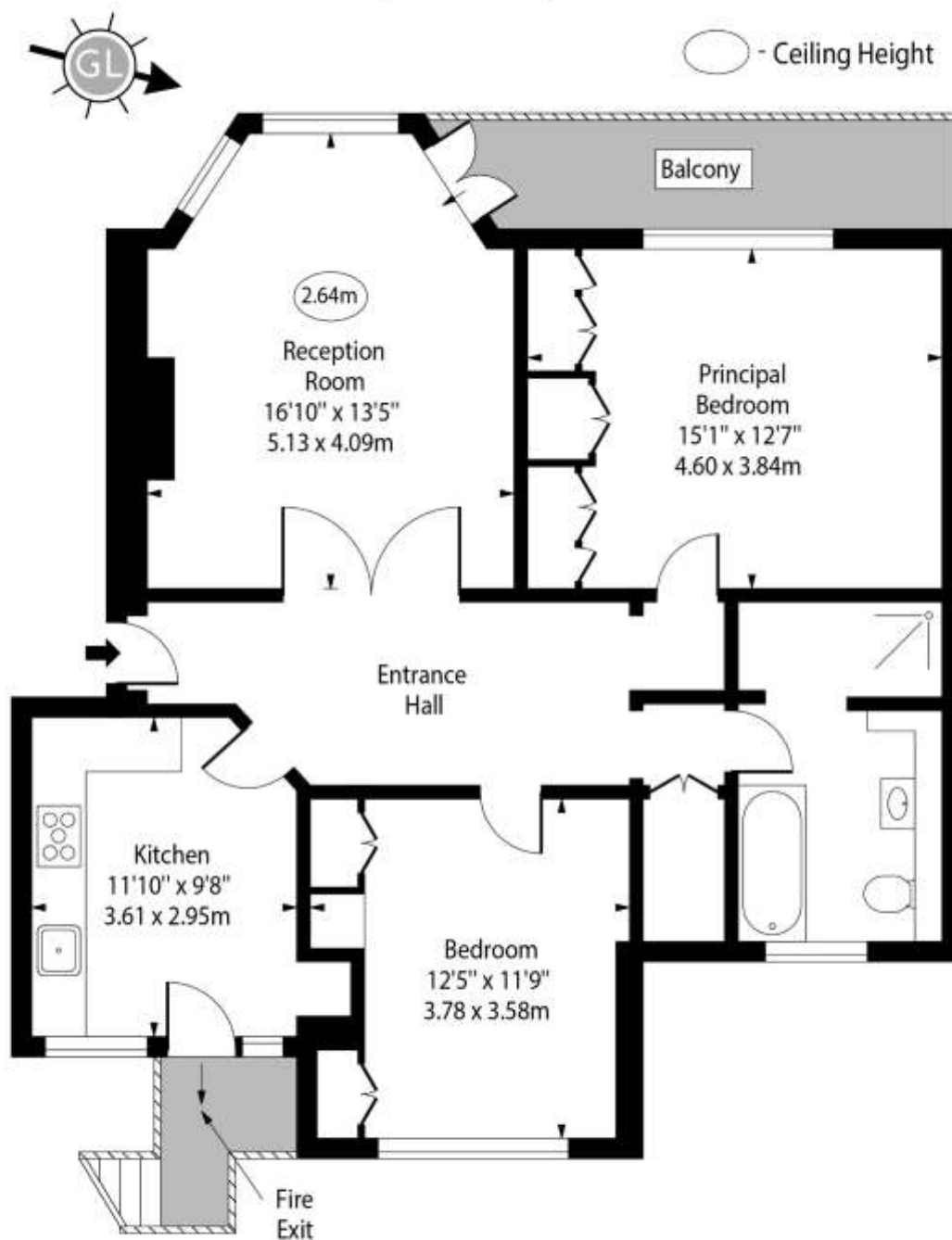
SW15 2TX

putney@chestertons.co.uk

020 8246 5959

chestertons.co.uk

# Roehampton Close, SW15



## Second Floor

Approx Gross Internal Area 937 Sq Ft - 87.05 Sq M

For Illustration Purposes Only - Not To Scale

[www.goldlens.co.uk](http://www.goldlens.co.uk)

Ref. No. 022926.1E

