



# Gonville House

Manor Fields, SW15

Asking Price £800,000

Located in the highly sought-after Manor Fields development, this spacious top floor, 1087s.f. 3 bedroom apartment offers exceptional entertaining space, beautiful views of Putney Heath and the manicured communal gardens.

**CHESTERTONS**



# Gonville House

Manor Fields, SW15

- Spacious mansion flat 1087sf
- Set within this desirable Art Deco development
- Bright, bay fronted double reception / dining room
- Delightful communal gardens
- Private parking
- Loft storage
- Porter/caretaker
- Lift





Located in the highly sought-after Manor Fields development, this spacious top floor, 1087sf 3 bedroom apartment offers exceptional entertaining space, beautiful views of Putney Heath and the manicured communal gardens.

The property is presented in fantastic condition throughout and is ready to move into, comprising 3 double bedrooms, family bathroom, guest WC, modern kitchen and double reception with dining room which enjoys far reaching views over Putney Heath.

Manor Fields is set within 12 acres of grounds and amenities include private parking, lift, porter/caretaker & night time security.

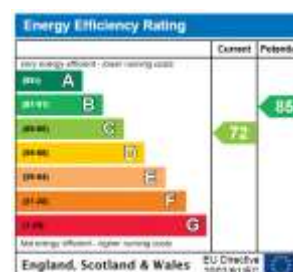
Manor Fields is an Art Deco style private development located just off Putney Hill 2 minutes' walk from the open spaces of Putney Heath and Wimbledon Common is also nearby. Transport into London is available via Putney mainline station & East Putney Underground station. Local buses are available immediately outside the front gates on Putney Hill. Excellent restaurants, bars, cafes and shops can be found on the nearby Putney High Street.

**Tenure:** Share of Freehold 1/04/2983

**Service Charge:** £8761.88 Buildings Insurance, external building maintenance, upkeep of grounds and gardens, 24 hour security, rubbish and waste collection and ample residents parking.

**Local Authority:** London Borough of Wandsworth

**Council Tax Band:** F



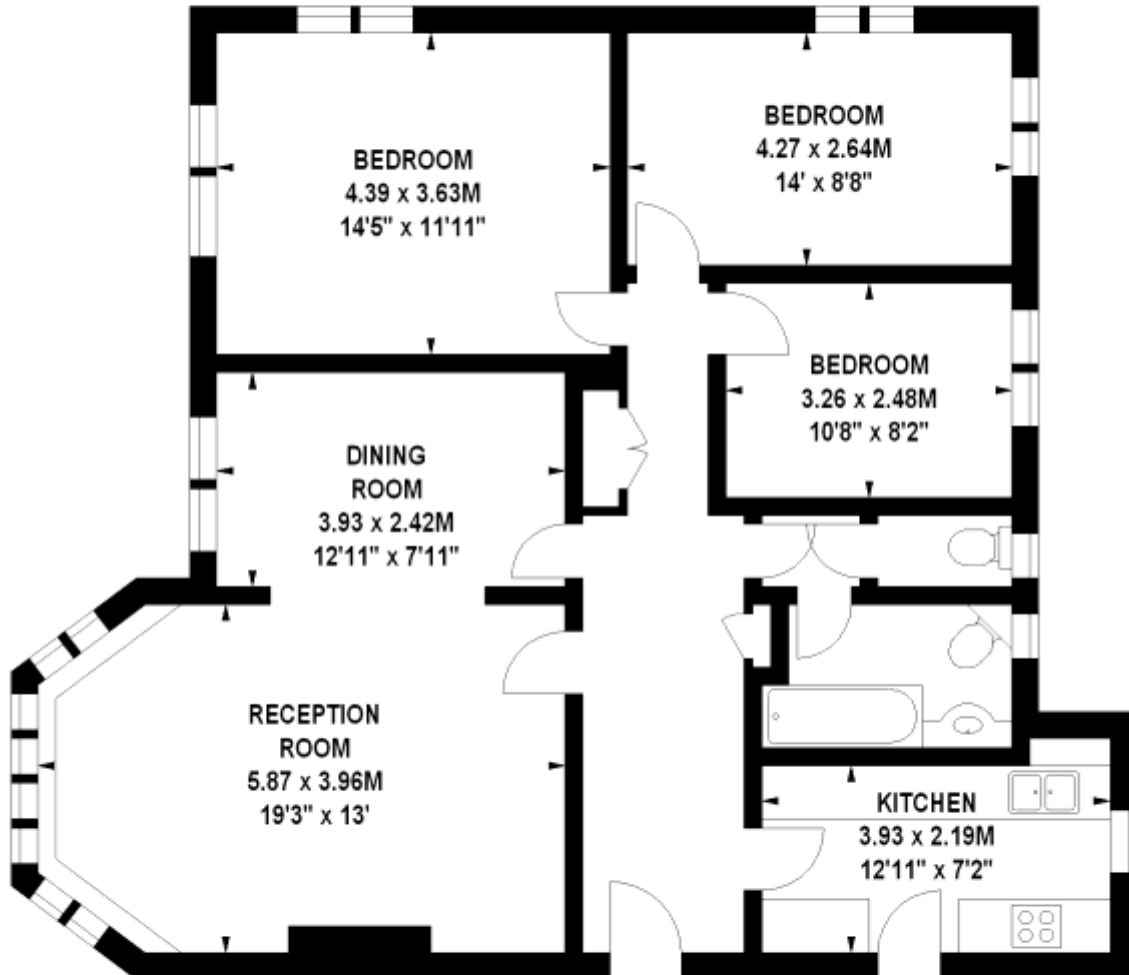
**Chestertons Putney Sales**

153 Upper Richmond Road  
London  
SW15 2TX  
putney@chestertons.co.uk  
020 8246 5959  
chestertons.co.uk

# Gonville House, Manor Fields, SW15

Approximate gross internal area

101.0 sq m / 1087 sq ft



## Second Floor

Illustration For Identification Purposes Only. Not To Scale

\*Floorplan Drawn According To RICS Guidelines

Copyright of FeaturePRO