



Marlborough

Inner Park Road, SW19

Asking Price £275,000

This charming one bedroom mansion flat located in this well maintained mansion block by Wimbledon Common & short walk to Southfields tube station.



Marlborough

Inner Park Road, SW19

- Ground Floor
- One Bedroom
- Well Presented
- Front & Rear Communal Gardens
- Parking



This ground floor flat comprises a double bedroom, bathroom, modern open plan kitchen and reception room.

Marlborough is located on Inner Park Road, a short walk to Southfields Tube Station for District Line to Central London, very near to Wimbledon Common and close to Wimbledon Village. There is also unrestricted on road parking.

Tenure: Leasehold expires 30/09/2170

Service Charge: £1500

Ground Rent: £80 p.a.

Local Authority: London Borough of Wandsworth

Council Tax Band: B

Energy Efficiency Rating		
	Current	Potential
Very energy efficient - lower running costs		
A (94-100)		
B (81-93)		
C (69-80)		
D (55-68)		66
E (39-54)		
F (21-38)	37	
G (1-20)		
Not energy efficient - higher running costs		
England, Scotland & Wales EU Directive 2002/91/EC		

Chestertons Putney Sales

153 Upper Richmond Road

London

SW15 2TX

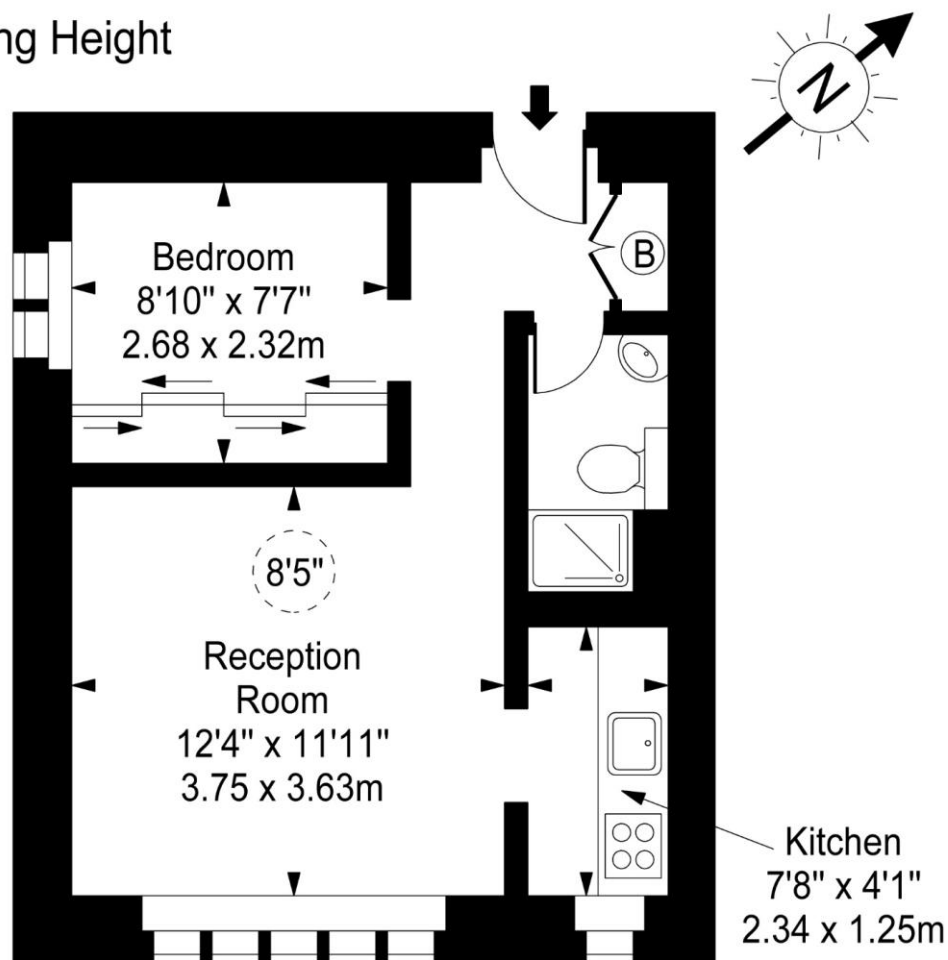
putney@chestertons.co.uk

020 8246 5959

chestertons.co.uk

Marlborough, Inner Park Road, SW19

○ - Ceiling Height



Ground Floor

Approx Gross Internal Area **334 Sq Ft - 31.03 Sq M**

For Illustration Purposes Only - Not To Scale

www.goldlens.co.uk

Ref. No. 013711AG

