



Upper Richmond Road

London, SW15

Offers in excess of £440,000

This fantastically located two bedroom flat is in the heart of Putney, being under 0.1 miles to Putney Station, 0.3 miles to East Putney tube station whilst having Putney High Street on the doorstep.



Upper Richmond Road

London, SW15

- Central Putney location
- Two double bedrooms
- Private terrace
- Chain free
- Light and bright throughout



This fantastically located two bedroom flat is in the heart of Putney, being 0.1 miles to Putney Station, 0.4 miles to East Putney tube station whilst having Putney High Street on the doorstep.

As you enter the property to your right, you have a large open-plan kitchen/living area, which is flooded in light, facing south. At the opposite end of the hallway are two double bedrooms with built in storage and the bathroom.

The property also has a large, private terrace.

Located moments from both stations as well as the high street, the location of the flat is unrivalled, with many good bus routes also available and easy access out of London via the A3.

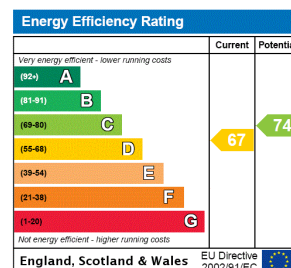
Tenure: Leasehold (expiry: 29/09/2122)

Service Charge: £1983.25 p.a. All aspects of management & rent (sinking fund £1272.72 p.a.)

Ground Rent: £200 p.a.

Local Authority: London Borough of Wandsworth

Council Tax Band: D



Chestertons Putney Sales

153 Upper Richmond Road

London

SW15 2TX

putney@chestertons.co.uk

020 8246 5959

chestertons.co.uk

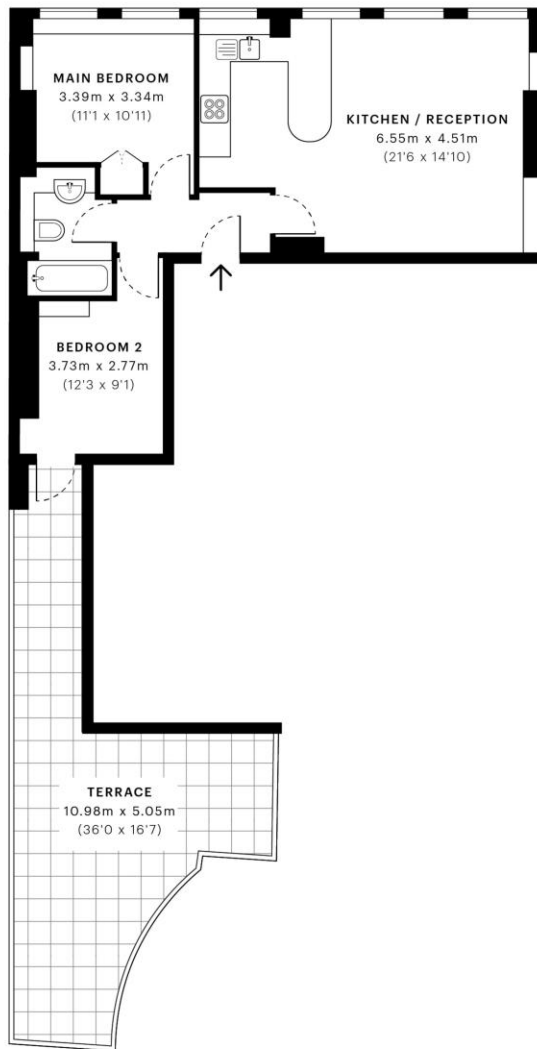


Upper Richmond Road, SW15

CAPTURE DATE 08/09/2022 LASER SCAN POINTS 65,617,005

GROSS INTERNAL AREA

55.65 sqm / 599.01 sqft



— First Floor



Spec Verified floor plans are produced in accordance with:
Royal Institution of Chartered Surveyors' Property Measurement Standards.
Plots and gardens are illustrative only and excluded from all area calculations.
Due to rounding, numbers may not add up precisely.
All measurements shown for the individual room lengths and widths
are the maximum points of measurements captured in the scan.

IPM6:38 RESIDENTIAL 82.40 sqm / 888.95 sqft
IPM6:3C RESIDENTIAL 80.38 sqm / 860.20 sqft

SPEC ID 5630f685db454fb0dd3c12544

Chesterton Global Ltd trading as Chestertons for themselves and for the vendor of this property whose agents they are, give notice that (i) these particulars do not constitute any part of an offer or contract, (ii) all statements contained within these particulars are made without responsibility on the part of Chestertons or the vendor, (iii) whilst made in good faith, none of the statements contained within these particulars are to be relied upon as a statement or representation of fact, (iv) any intending purchasers must satisfy themselves by inspection or otherwise as to the correctness of each of the statements contained within these particulars, (v) the vendor does not make or give either Chestertons or any person in their employment any authority to make or give representation or warranty whatsoever in relation to this property. Wide angle lenses may be used. ©Copyright Chestertons | Chesterton Global Ltd | Registered Office 40 Connaught Street, Hyde Park, London W2 2AB Registered Company Number 05334580.



This paper is
100% recyclable