



Fairacres

Roehampton Lane, SW15

Asking Price £1,300,000

A wonderfully positioned 4 bed flat located in the ever popular Fairacres development. Boasting South facing views over the beautifully kept communal gardens and onto the Roehampton Club golf course.



Fairacres

Roehampton Lane, SW15

- Desirable position - top floor
- South facing views over communal gardens
- Highly sought-after estate with direct access into the Roehampton Club
- 1,755 square foot
- 0.4 miles to Barnes Station
- Secure allocated parking space
- Chain free
- Secure building with on-site porter



A wonderfully positioned 4 bed flat located in the ever popular Fairacres development. Boasting South facing views over the beautifully kept communal gardens and onto the Roehampton Club golf course.

This property, in need of modernisation, offers over 1750sf of accommodation. It features two reception rooms, both of which have access to the South facing balcony. The property has 4 bedrooms, two bathrooms and a large eat in kitchen with far reaching views of the city.

Fairacres is a very well managed building with a porter, extensive private parking (the property also has one allocated secure parking space in the garage) and direct access into the Roehampton Club. It is within easy reach of Barnes Station and there are numerous bus routes on the doorstep. Close by are Queen Marys Hospital and the vast green spaces of Richmond Park, Barnes Common, Wimbledon Common and Putney Heath.

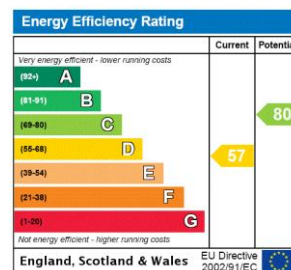
Tenure: Share of Freehold (Lease expiry 25/12/2137)

Service Charge: £9,349 p.a. - General service charge, ground rent and reserve fund contribution

Ground Rent: £5 p.a.

Local Authority: Wandsworth

Council Tax Band: G



Chestertons Putney Sales

153 Upper Richmond Road

London

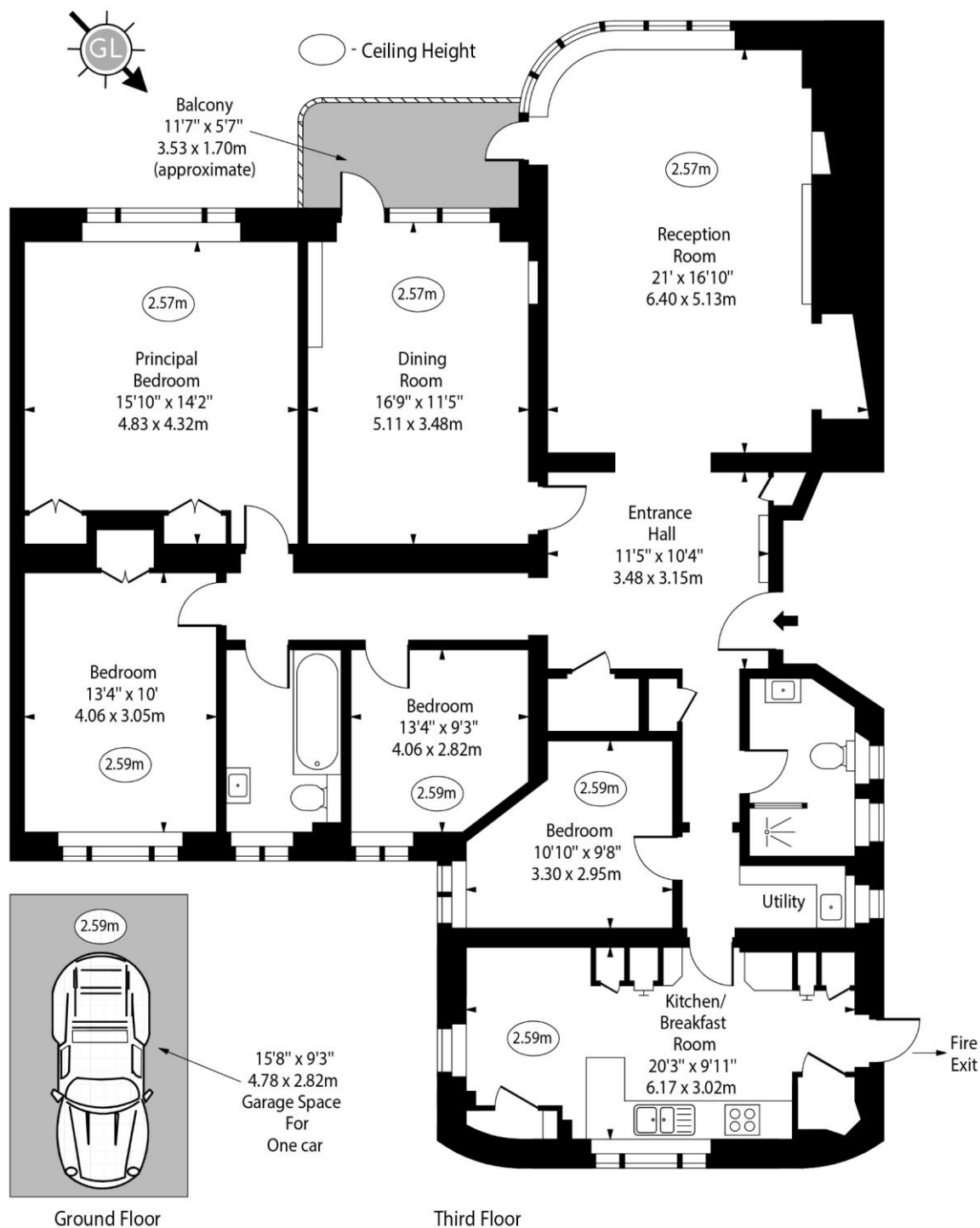
SW15 2TX

sales.putney@chestertons.co.uk

020 8246 5959

chestertons.co.uk

Fairacres, SW15



Approx Gross Internal Area 1755 Sq Ft - 163.04 Sq M

For Illustration Purposes Only - Not To Scale

www.goldlens.co.uk

Ref. No. 020370M

