



# Beaufort Close

Putney, SW15

Asking Price £1,500,000

An elegant and handsome end of terrace home in the stunning Putney Heath development of Lynden Gate. With secluded South West facing garden and adjacent garage as well as off street parking.



# Beaufort Close

Putney, SW15

- Beautiful end of terrace house
- Attached double length garage
- Off street parking
- South West facing garden
- Secure gated development
- On-site property management team
- Communal gardens



A beautifully presented end of terrace home in the stunning Putney Heath development of Lynden Gate.

An elegant, neo-Georgian style, three bedroom, end-of-terrace house forming part of this secure, and highly sought after, gated development hidden away on Putney Heath, which benefits from an attached double length garage, off-street parking, gated security, on-site property management team and communal gardens.

The property comprises three bedrooms, one en-suite bathroom, family bathroom, reception, study/fourth bedroom, utility room, guest cloakroom, kitchen with double doors leading through to the second reception and South West-facing garden.

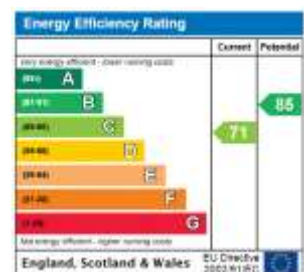
Beaufort Close is located within the Lynden Gate development, hidden away on Putney Heath, which benefits from gated security, on-site porters and communal gardens, as well as the wonderful views and local wildlife of the nearby Putney Heath, perfect for dog walkers, cyclists and outdoor enthusiasts.

Tenure: Freehold

Service Charge: £5400 Including; Gardens, gates, security & porters. Sinking fund.  
(Paid monthly at £450 pm)

Local Authority: London Borough of Wandsworth

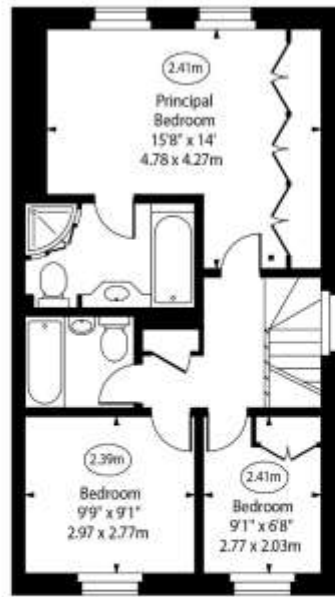
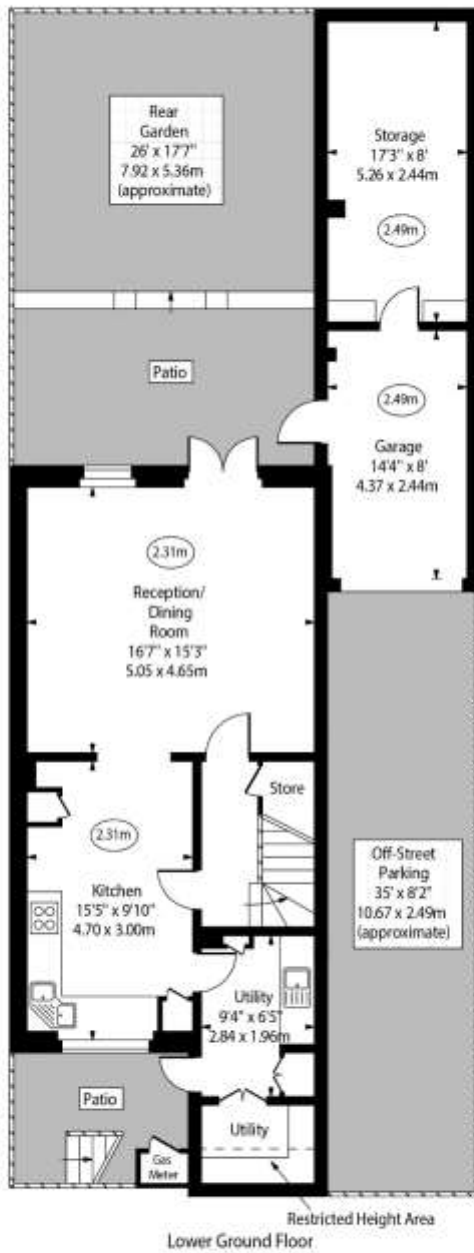
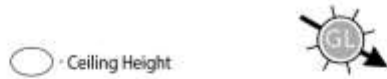
Council Tax Band: G



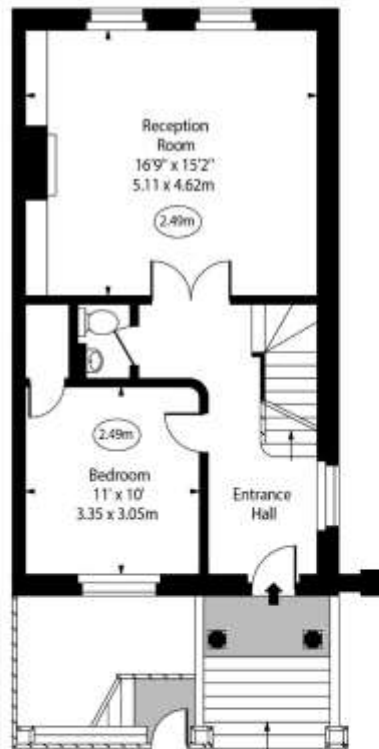
*Chestertons Putney Sales*

153 Upper Richmond Road  
London  
SW15 2TX  
putney@chestertons.co.uk  
020 8246 5959  
chestertons.co.uk

# Beaufort Close, SW15



First Floor



Ground Floor

**Approx Gross Internal Area** 1610 Sq Ft - 149.57 Sq M  
**Approx. Floor Area Including Restricted Heights** 1623 Sq Ft - 150.78 Sq M  
 (Excluding Garage & Storage)  
**Garage & Storage Area** 254 Sq Ft - 23.60 Sq M

For Illustration Purposes Only - Not To Scale  
[www.goldlens.co.uk](http://www.goldlens.co.uk)  
 Ref. No. 022895M

Chesterton Global Ltd trading as Chestertons for themselves and for the vendor of this property whose agents they are, give notice that (i) these particulars do not constitute any part of an offer or contract, (ii) all statements contained within these particulars are made without responsibility on the part of Chestertons or the vendor, (iii) whilst made in good faith, none of the statements contained within these particulars are to be relied upon as a statement or representation of fact, (iv) any intending purchasers must satisfy themselves by inspection or otherwise as to the correctness of each of the statements contained within these particulars, (v) the vendor does not make or give either Chestertons or any person in their employment any authority to make or give representation or warranty whatsoever in relation to this property. Wide angle lenses may be used. ©Copyright Chestertons | Chesterton Global Ltd | Registered Office 40 Connaught Street, Hyde Park, London W2 2AB Registered Company Number 05334580.

