



Carmalt Gardens

London, SW15

Asking Price £2,000,000

An imposing and handsome three story house located on this gorgeous West Putney Road, filled with period features and a West facing garden, overlooking the tennis courts of The Putney Lawn Tennis Club.

CHESTERTONS



Carmalt Gardens

London, SW15

- West facing garden
- Five Bedrooms
- Potential to extend STPP
- Period features throughout
- En-suite bathroom
- Prime road



As you enter the house through the front garden you are greeted with a large entrance hall. On your right you have a front reception room, currently being used as a formal dining room, with original features and fire place. Further down the hallway is the eat in kitchen, which overlooks the West facing garden. At the end of the ground floor is a large reception room, also with original features and three metre tall ceilings, overlooking the West facing garden.

Being West facing on Carmalt Gardens provides far reaching views, overlooking the Putney Lawn Tennis Club, offering something exceptionally special and standing out from neighbouring roads. On the first floor of the house you have three double bedrooms and a family bathroom.

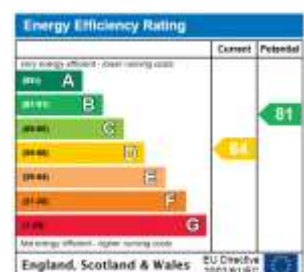
Across the top floor is another double bedroom, large store room and the principle bedroom, which offers a plethora of built in wardrobes and a large bathroom with both shower and bathtub. The property also has a handy cellar for storage.

Carmalt Gardens is ideally located on a premium Upper West Putney road, with Putney's High Street and station just a short walk away, whilst maintaining a quiet community feel. The local area enjoys several well-regarded local schools, including Our Lady of Victories and Hotham primary schools, as well as the open green spaces of Wimbledon and Barnes & Putney Commons.

Tenure: Freehold

Local Authority: London Borough of Wandsworth

Council Tax Band: G



Chestertons Putney Sales

153 Upper Richmond Road

London

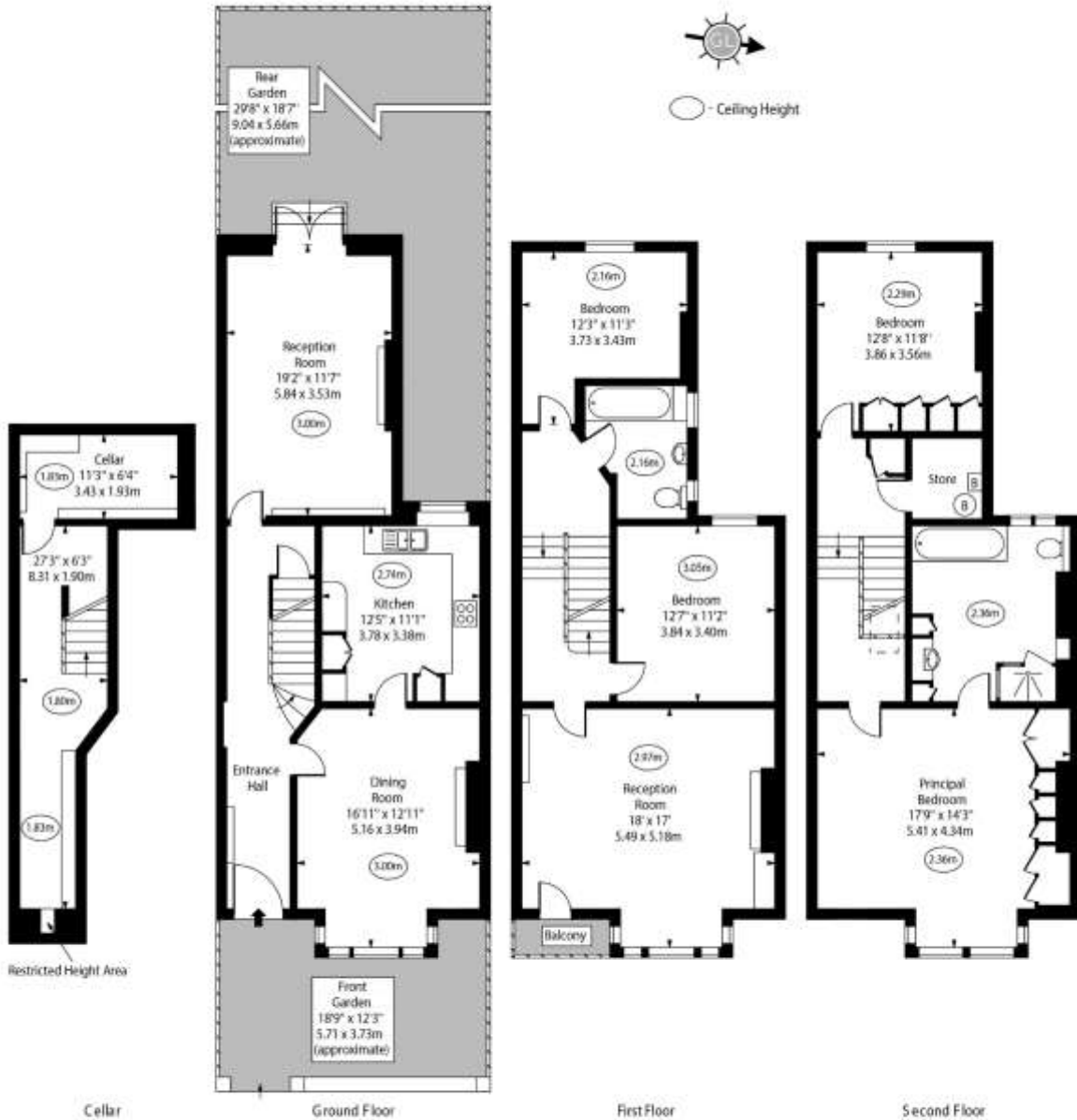
SW15 2TX

putney@chestertons.co.uk

020 8246 5959

chestertons.co.uk

Carmalt Gardens,
Putney, SW15



Approx Gross Internal Area 2433 Sq Ft - 226.03 Sq M
(Including Cellar)

Approx. Floor Area Including Restricted Heights 2435 Sq Ft - 226.21 Sq M
(Including Cellar)

For Illustration Purposes Only - Not To Scale
www.goldens.co.uk
Ref. No. 021747M

Chesterton Global Ltd trading as Chestertons for themselves and for the vendor of this property whose agents they are, give notice that (i) these particulars do not constitute any part of an offer or contract, (ii) all statements contained within these particulars are made without responsibility on the part of Chestertons or the vendor, (iii) whilst made in good faith, none of the statements contained within these particulars are to be relied upon as a statement or representation of fact, (iv) any intending purchasers must satisfy themselves by inspection or otherwise as to the correctness of each of the statements contained within these particulars, (v) the vendor does not make or give either Chestertons or any person in their employment any authority to make or give representation or warranty whatsoever in relation to this property. Wide angle lenses may be used. ©Copyright Chestertons | Chesterton Global Ltd | Registered Office 40 Connaught Street, Hyde Park, London W2 2AB Registered Company Number 05334580.

