



Rotherwood Road

London, SW15

Asking Price £1,300,000

An extremely rare opportunity to buy an untapped four bedroom Victorian end of terrace house on one of West Putney's most popular River Roads.



Rotherwood Road

London, SW15

- End of terrace
- Chain free
- Prime West Putney River Road
- Excellent catchment for Ofsted outstanding schools
- Potential to extend STPP
- Garden



An extremely rare opportunity to buy an untapped four bedroom Victorian end of terrace house on one of West Putney's most popular River Roads.

Located on a tranquil, residential street in West Putney, this Victorian house remains unmodified from its original layout and there is potential for a side return, rear extension, and further loft conversion, subject to the usual consents.

Entering via the side entrance you have a large entrance hall which flows through to the spacious living room, which is full of original period features. At the rear of the house you have the kitchen which provides access to the 21 ft long private and secluded garden.

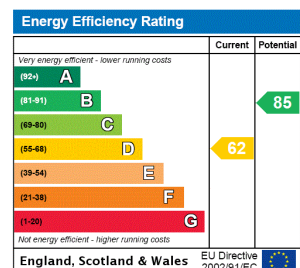
Across the first floor you have three double bedrooms and a bathroom. The top floor offers a large en-suite bedroom, featuring a front dormer for great head height throughout.

Rotherwood Road is within walking distance to the mainline train station and the many amenities and transport links of central Putney and the beautiful river Thames embankment and open space of Putney Common are also very close by. The house is in the catchment area for a number of excellent west Putney primary schools.

Tenure: Freehold

Local Authority: Wandsworth

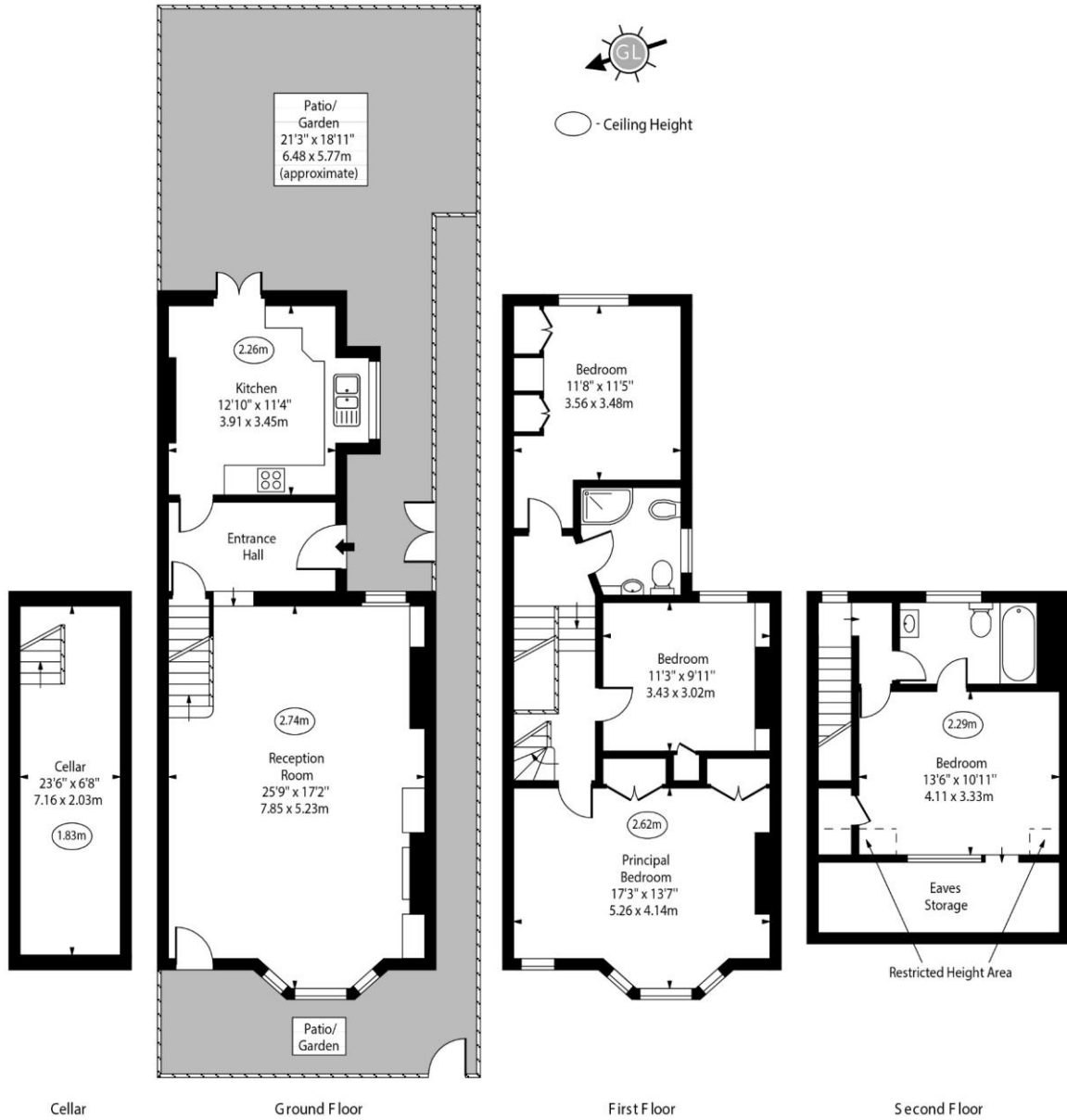
Council Tax Band: G



Chestertons Putney Sales

153 Upper Richmond Road
 London
 SW15 2TX
 putney@chestertons.co.uk
 020 8246 5959
 chestertons.co.uk

Rotherwood Road, SW15



Cellar Area 158 Sq Ft - 14.68 Sq M
 (Including Cellar)
 Approx. Floor Area Including Restricted Heights 1830 Sq Ft - 170.01 Sq M
 (Including Cellar)
 Approx Gross Internal Area 1734 Sq Ft - 161.09 Sq M
 (Including Cellar)
 For Illustration Purposes Only - Not To Scale
 www.goldlens.co.uk
 Ref. No. 022521E

Chesterton Global Ltd trading as Chestertons for themselves and for the vendor of this property whose agents they are, give notice that (i) these particulars do not constitute any part of an offer or contract, (ii) all statements contained within these particulars are made without responsibility on the part of Chestertons or the vendor, (iii) whilst made in good faith, none of the statements contained within these particulars are to be relied upon as a statement or representation of fact, (iv) any intending purchasers must satisfy themselves by inspection or otherwise as to the correctness of each of the statements contained within these particulars, (v) the vendor does not make or give either Chestertons or any person in their employment any authority to make or give representation or warranty whatsoever in relation to this property. Wide angle lenses may be used. ©Copyright Chestertons | Chesterton Global Ltd | Registered Office 40 Connaught Street, Hyde Park, London W2 2AB Registered Company Number 05334580.

