



Dover House Road

London, SW15

Asking Price £900,000

Welcome to Dover House Road, a charming and elegant residence situated in the heart of the Dover House Conservation Area. This beautifully presented property offers a harmonious blend of classic architecture and contemporary design.



Dover House Road

London, SW15

- 3 double bedrooms
- Large open plan kitchen living area
- Separate reception / study
- 2 bathrooms
- 1110 sq. ft.
- Recently refurbished
- Potential to extend into loft STPP
- Close to local bus routes



Welcome to Dover House Road, a charming and elegant residence situated in the heart of the Dover House Conservation Area. This beautifully presented property offers a harmonious blend of classic architecture and contemporary design, providing the perfect balance between comfort and sophistication.

Upon entering, you'll be greeted by a warm and inviting ambiance, complemented by an abundance of natural light that filters through large windows, creating a bright and airy living space. The ground floor features a modern shower room and home office, providing versatile spaces that cater to the demands of modern living.

The heart of the home is the open-plan kitchen and living area. The kitchen is equipped with high-end appliances, sleek cabinetry, and ample countertop space. Stepping outside, you'll find a delightful private garden.

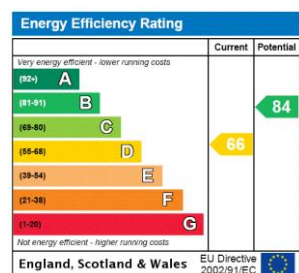
Location-wise, Dover House Road offers unbeatable convenience. With local bus routes, you have easy access to a variety of destinations, including Barnes Station, Putney High Street, East Putney underground and Putney over ground services, Barnes Common, Putney heath and Richmond Park. This excellent transport connectivity ensures that you can explore London effortlessly and access nearby amenities with ease.

This outstanding property presents a rare opportunity to reside in one of SW15's most sought-after locations. With its tasteful design, modern comforts, and superb location.

Tenure: Freehold
Local Authority: Wandsworth
Council Tax Band: E

Chestertons Putney Sales

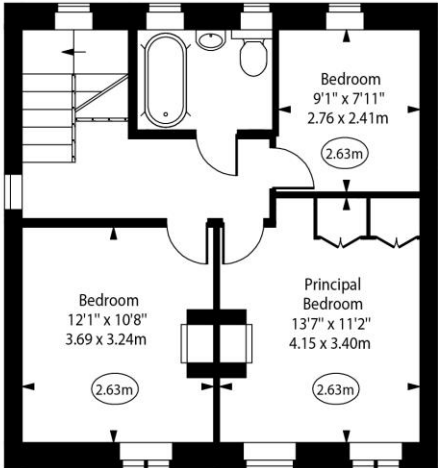
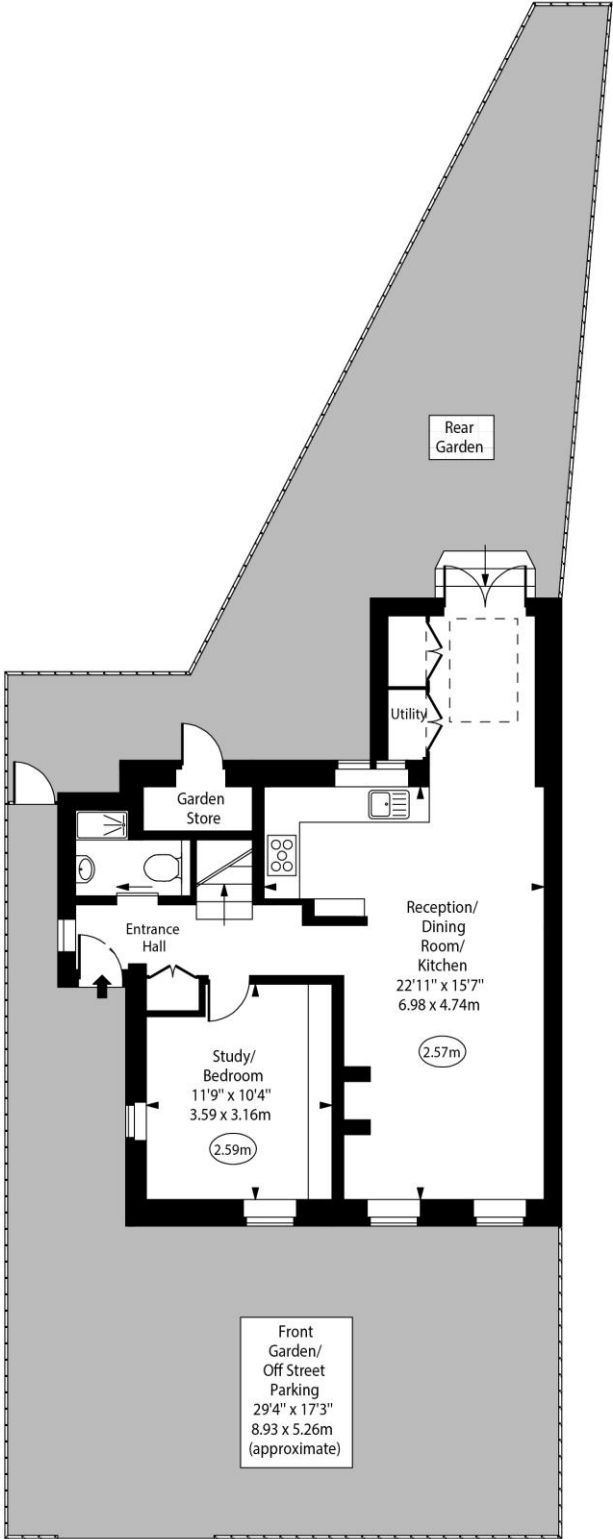
153 Upper Richmond Road
 London
 SW15 2TX
 putney@chestertons.co.uk
 020 8246 5959
 chestertons.co.uk



Dover House Road,
Putney, SW15



○ - Ceiling Height



Ground Floor

First Floor

Approx Gross Internal Area 1110 Sq Ft - 103.12 Sq M
(Excluding Garden Store)

For Illustration Purposes Only - Not To Scale
www.goldlens.co.uk
Ref. No. 021368R

Chesterton Global Ltd trading as Chestertons for themselves and for the vendor of this property whose agents they are, give notice that (i) these particulars do not constitute any part of an offer or contract, (ii) all statements contained within these particulars are made without responsibility on the part of Chestertons or the vendor, (iii) whilst made in good faith, none of the statements contained within these particulars are to be relied upon as a statement or representation of fact, (iv) any intending purchasers must satisfy themselves by inspection or otherwise as to the correctness of each of the statements contained within these particulars, (v) the vendor does not make or give either Chestertons or any person in their employment any authority to make or give representation or warranty whatsoever in relation to this property. Wide angle lenses may be used. ©Copyright Chestertons | Chesterton Global Ltd | Registered Office 40 Connaught Street, Hyde Park, London W2 2AB Registered Company Number 05334580.



This paper is
100% recyclable