



West Hill

Putney, SW15

Asking Price £448,000

A great modern 2 bed 2 bath flat with parking and direct access to outside space. This bright flat is situated in a lovely small block close to Wandsworth and Putney's town centres. No chain.



West Hill

Putney, SW15

- Lovely modern building
- 2 bedrooms
- 2 bathrooms (one ensuite)
- Spacious rooms
- Open-plan layout
- Double doors from living room out to patio
- Allocated parking



A great modern 2 bed 2 bath flat with parking and direct access to outdoor space.

This contemporary flat, situated on the ground floor of a well-kept building, offers a large open-plan living room with double doors out to a private patio area. There are two double bedrooms, the main bedroom benefitting from plentiful built in wardrobes and an ensuite shower room, a second bathroom and additional storage.

The flat is set back from West Hill with greenery in front of it and is within easy reach to Wandsworth, Putney and Southfields town centres, either by walking or bus. Here you will find tube stations and plentiful shops, cafes, bars, restaurants. The vast green spaces of Putney Heath & Wimbledon Common are also on the doorstep.

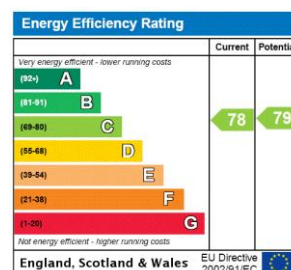
Tenure: Leasehold expires 01/06/3002

Service Charge: £2865.62 Maintenance gardens windows etc

Ground Rent: £247 Awaiting confirmation

Local Authority: London Borough of Wandsworth

Council Tax Band: E



Chestertons Putney Sales

153 Upper Richmond Road

London

SW15 2TX

putney@chestertons.co.uk

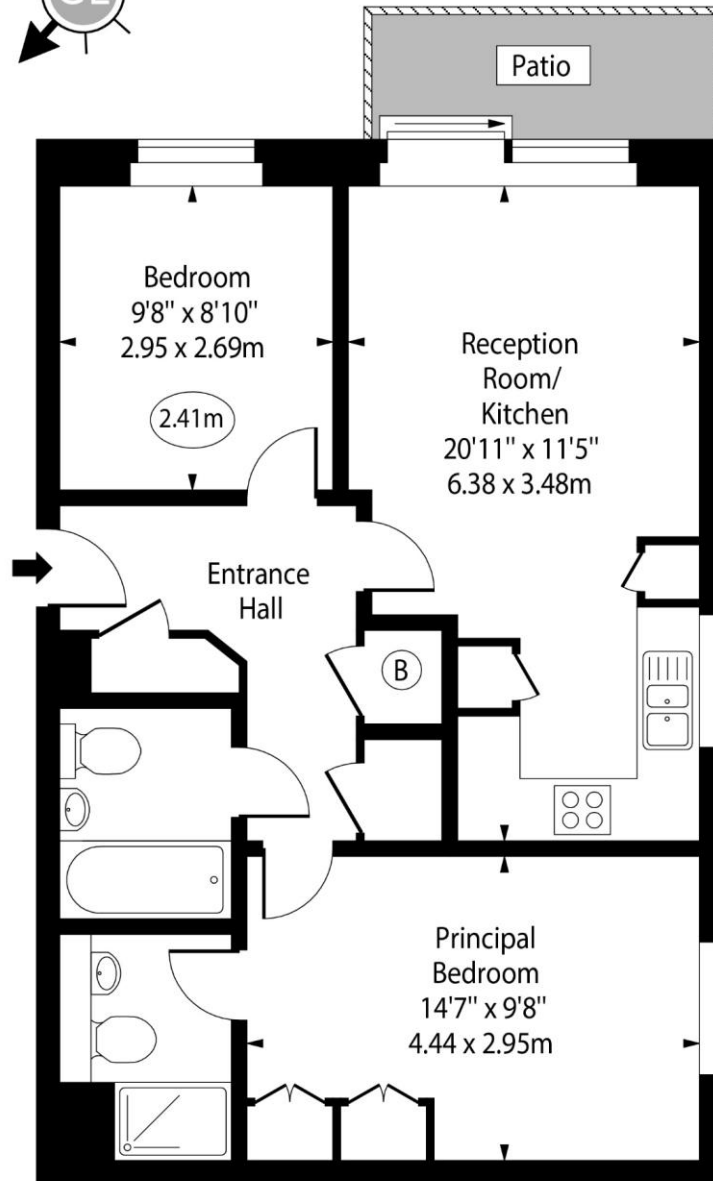
020 8246 5959

chestertons.co.uk

Nucleus Apartments, West Hill, SW15



○ - Ceiling Height



Ground Floor

Approx Gross Internal Area 642 Sq Ft - 59.64 Sq M

For Illustration Purposes Only - Not To Scale

www.goldlens.co.uk

Ref. No. 020166E

