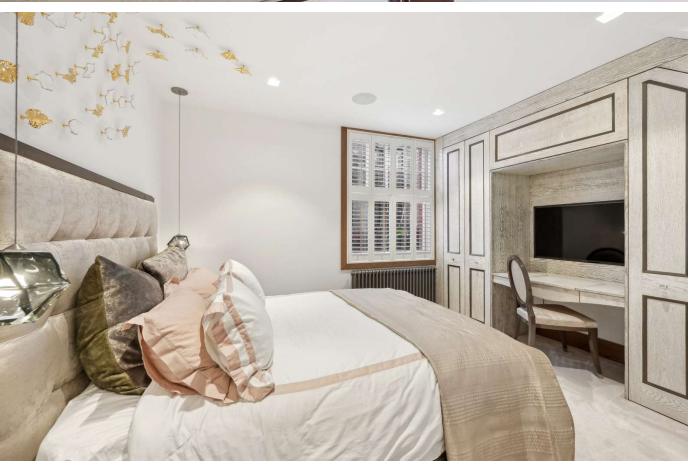




Greencoat Place
London, SW1P

CHESTERTONS





A rare opportunity has arisen to purchase this unique and truly exceptional property.

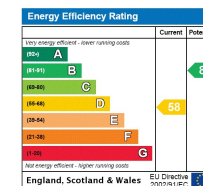
A full refurbishment has been carried out with no expense spared creating a very stylish, modern interior which exudes elegance and refinement. Set over three floors spanning just under 1,000 sq ft, the property comprises a bespoke, beautifully crafted kitchen / dining room located on the ground floor with full integrated appliances and a large sky light creating an abundance of natural light. There are two masterfully designed double bedrooms with the principal bedroom benefitting from fitted wardrobes and a modern en suite bathroom and on the third floor is the spacious, very comfortable reception room. While this is a Share of Freehold flat, it really does have the true feeling of a house.

Further benefits include a second bathroom, a state of the art built-in sound system throughout, highly desirable location and is being sold with no onward chain.

Greencoat Place is conveniently located for the shops, cafes and restaurants of Westminster, and within easy reach of Victoria Station (Victoria, Circle and District underground lines, mainline station and Gatwick Express).

- Exceptional Two Double Bedroom Property
- Stunning Bespoke Kitchen / Dining Room
- Two Bathrooms (One En Suite)
- Spacious Reception Room
- Share of Freehold
- No Onward Chain

Asking Price £1,250,000



Tenure: Share of Freehold (Lease expires on 25th March 2997)

Service Charge: £4,000 (Approximately) per year

Ground Rent: £0

Local Authority: Westminster

Council Tax Band: G

Chestertons Westminster & Pimlico Sales

105 Wilton Road

London

SW1V 1DZ

westminster@chestertons.co.uk

020 3040 8201

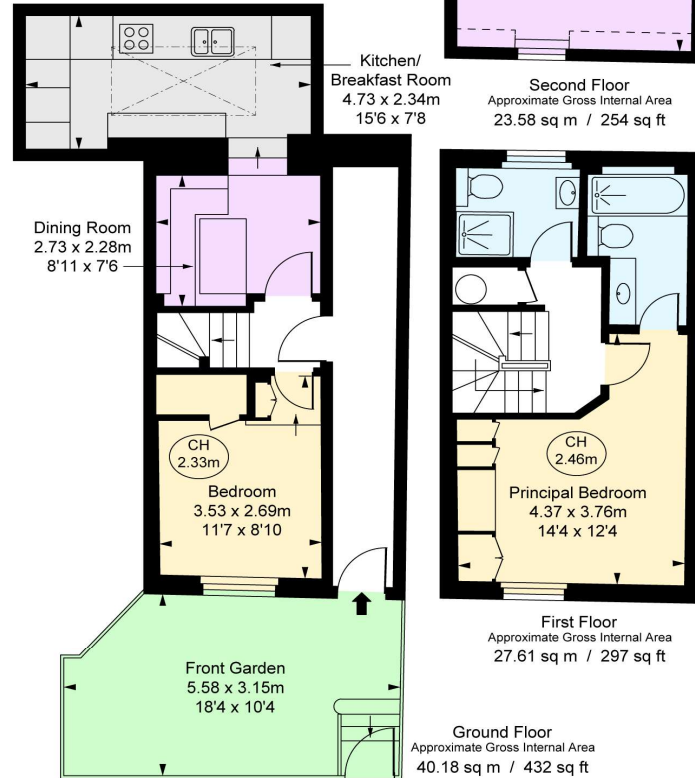
chestertons.co.uk

Greencoat Place, SW1P

Approximate Gross Internal Area
91.37 sq m / 984 sq ft

(Including restricted height
under 1.5m [5'0"])

(CH = Ceiling Heights)



This plan is not to scale. It is for guidance and not for valuation purposes.
All measurements and areas are approximate only, and have been prepared in accordance with the current edition of the RICS Code of Measuring Practice.
© Fulham Performance

Chesterton UK Services Limited trading as Chestertons for themselves and for the vendor of this property whose agents they are, give notice that (i) these particulars do not constitute any part of an offer or contract, (ii) all statements contained within these particulars are made without responsibility on the part of Chestertons or the vendor, (iii) whilst made in good faith, none of the statements contained within these particulars are to be relied upon as a statement or representation of fact, (iv) any intending purchasers must satisfy themselves by inspection or otherwise as to the correctness of each of the statements contained within these particulars, (v) the vendor does not make or give either Chestertons or any person in their employment any authority to make or give representation or warranty whatsoever in relation to this property. Wide angle lenses may be used. ©Copyright Chestertons | Chesterton UK Services Limited | Registered Office 40 Connaught Street, Hyde Park, London W2 2AB Registered Company Number 05334580.

