



St Georges Square
London, SW1V

CHESTERTONS



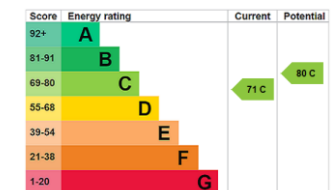


Discover this spacious, 1,221 sq ft two double bedroom period conversion, offering a great amount of lateral space within a handsome stucco-fronted building. The property boasts a light-filled, generously sized semi-open plan reception room with kitchen, two large bedrooms, and two bathrooms (1 en-suite). Further benefits include own entrance, large private patio and access to the prestigious St. George's Square. Share of Freehold.

St. George's Square is ideally situated, providing easy access to the River Thames, Battersea Park, and the vibrant selection of independent shops, cafes, and restaurants in Pimlico and Westminster. Excellent transport links are on your doorstep, including Pimlico (Victoria line) and Victoria Station (Victoria, Circle, and District lines, National Rail, and the Gatwick Express).

- 1,221 sq ft period apartment with excellent lateral space
- Two large bedrooms and two bathrooms (one en-suite)
- Semi-open plan, light-filled reception room and kitchen
- Highly sought-after own private entrance and large private patio
- Share of Freehold and access to St. George's Square
- Prime Pimlico location near Pimlico Station and the River Thames

Asking Price £1,000,000

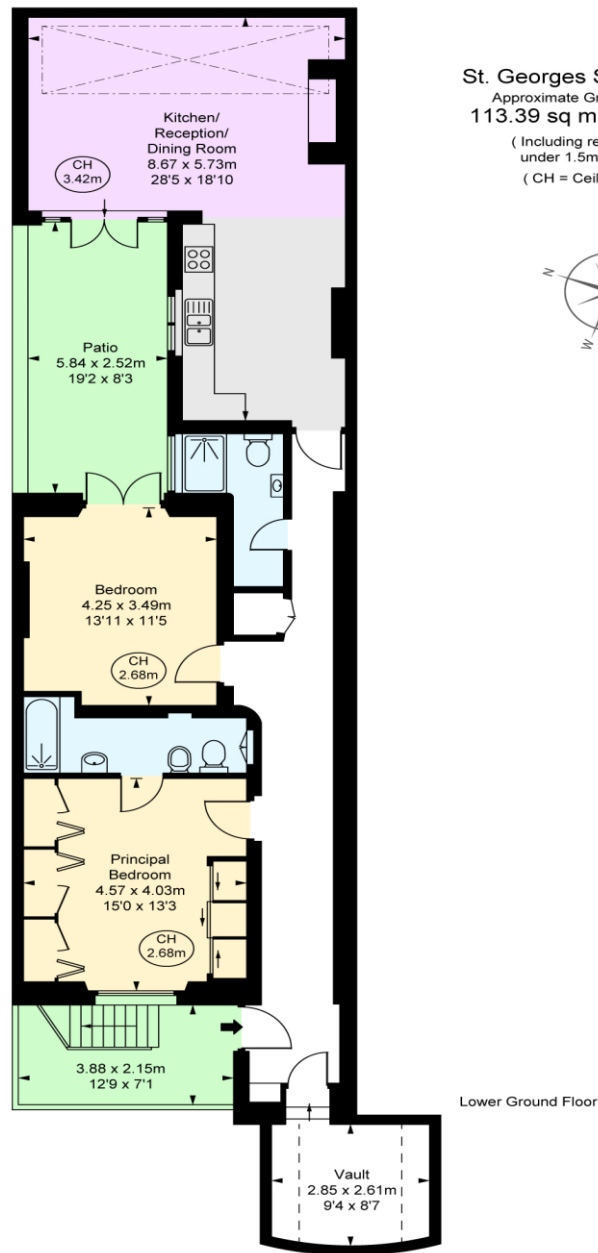
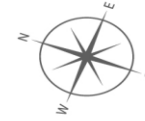


Tenure: Leasehold 999 years from 24th June 2011 with Share of Freehold
Service Charge: £4,412.84 p.a. (inclusive of sinking fund contribution)
Ground Rent: £0
Local Authority: Westminster
Council Tax Band: E

Chestertons Westminster & Pimlico Sales

105 Wilton Road
 London
 SW1V 1DZ
 westminster@chestertons.co.uk
 020 3040 8201
 chestertons.co.uk

St. Georges Square, SW1V
 Approximate Gross Internal Area
113.39 sq m / 1,221 sq ft
 (Including restricted height
 under 1.5m $\square = = = \square$)
 (CH = Ceiling Heights)



This plan is not to a given scale. A detailed layout plan to scale for valuation is available on request. All measurements and areas are within 1% tolerance and have been prepared in accordance with industry standards as defined in the RICS Code of Measuring Practice
 © Fulham Performance

Chesterton UK Services Limited trading as Chestertons for themselves and for the vendor of this property whose agents they are, give notice that (i) these particulars do not constitute any part of an offer or contract, (ii) all statements contained within these particulars are made without responsibility on the part of Chestertons or the vendor, (iii) whilst made in good faith, none of the statements contained within these particulars are to be relied upon as a statement or representation of fact, (iv) any intending purchasers must satisfy themselves by inspection or otherwise as to the correctness of each of the statements contained within these particulars, (v) the vendor does not make or give either Chestertons or any person in their employment any authority to make or give representation or warranty whatsoever in relation to this property. Wide angle lenses may be used. ©Copyright Chestertons | Chesterton UK Services Limited | Registered Office 40 Connaught Street, Hyde Park, London W2 2AB Registered Company Number 05334580.



This paper is
 100% recyclable