

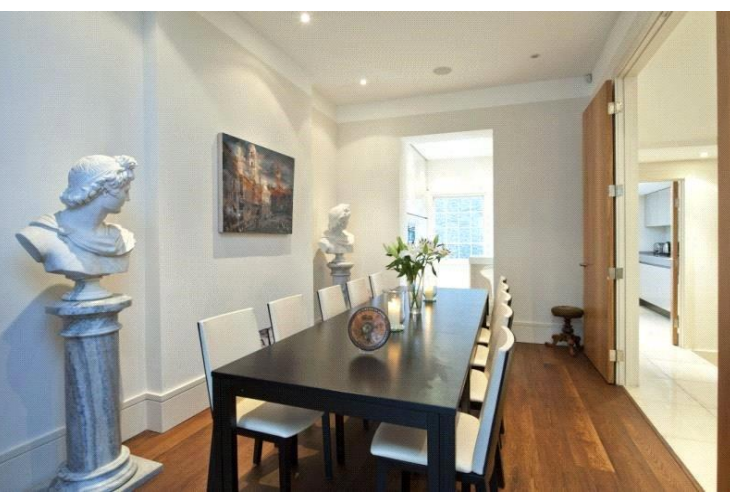


Gloucester Street  
Pimlico, SW1V

Asking Price £3,550,000

CHESTERTONS





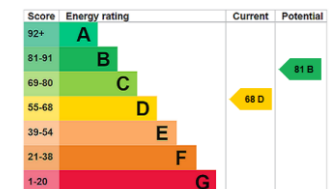




A large stucco fronted neutrally decorated house spanning just over 3200 sq ft, comprising five bedrooms, three bathrooms, three reception rooms, modern kitchen, patio garden and two terraces. The property is arranged over five floors and further benefits from having two vaults and it is offered with no onward chain.

Gloucester Street is conveniently located for the shops, cafes and restaurants of Pimlico and nearby Chelsea. The river Thames is moments away as is Battersea Park. The nearest transport can be found at Pimlico (Victoria line) and Victoria (Victoria, Circle and District lines, mainline station and Gatwick express).

- A Large Family House in the Heart of Pimlico
- Five Bedrooms and Three Bathrooms
- Three Reception Rooms
- Patio Garden and Two Terraces
- No Onward Chain



**Tenure:** Freehold

**Local Authority:** Westminster City Council

**Council Tax Band:** H

*Chestertons Westminster & Pimlico Sales*

105 Wilton Road

London

SW1V 1DZ

sales.westminster@chestertons.com

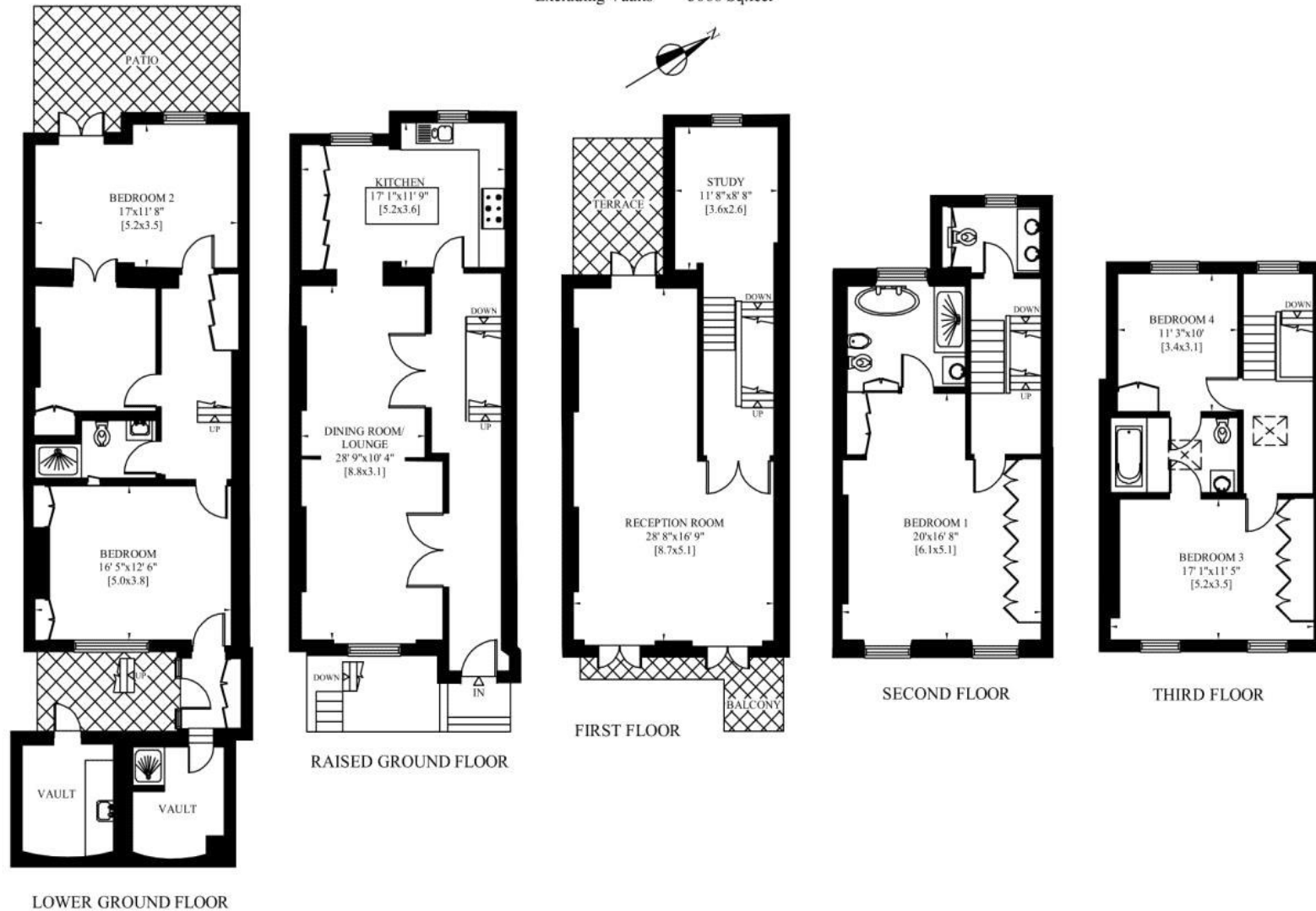
020 3040 8201

chestertons.com

87 GLOUCESTER STREET  
LONDON SW1

Gross Internal Area: 298 Sq. metres  
Including Vaults 3205 Sq. feet

Gross Internal Area: 285 Sq. metres  
Excluding Vaults 3066 Sq. feet



Chesterton Global Ltd trading as Chestertons for themselves and for the vendor of this property whose agents they are, give notice that (i) these particulars do not constitute any part of an offer or contract, (ii) all statements contained within these particulars are made without responsibility on the part of Chestertons or the vendor, (iii) whilst made in good faith, none of the statements contained within these particulars are to be relied upon as a statement or representation of fact, (iv) any intending purchasers must satisfy themselves by inspection or otherwise as to the correctness of each of the statements contained within these particulars, (v) the vendor does not make or give either Chestertons or any person in their employment any authority to make or give representation or warranty whatsoever in relation to this property. Wide angle lenses may be used. ©Copyright Chestertons | Chesterton Global Ltd | Registered Office 40 Connaught Street, Hyde Park, London W2 2AB Registered Company Number 05334580.