



Millennium House
132 Grosvenor Road, SW1V

CHESTERTONS





A rare opportunity to acquire a stunning Penthouse three-bedroom riverside apartment, offered on the market for the first time in 28 years. This unique property presents an exceptional chance to create your own bespoke riverside home.

An impressive three-bedroom penthouse apartment occupying a prime position within a sought-after red brick mansion block on the banks of the River Thames. This laterally spacious property boasts uninterrupted views towards Battersea Power Station and Nine Elms. The large reception room offers an ideal space for entertaining, while the separate kitchen ensures a comfortable and stylish environment. The property further comprises two bathrooms and residents benefit from the ultimate convenience of a 24-hour concierge, lift access, and allocated underground parking.

Millennium House is located in an ideal site in Central London, the property is within easy reach of the vibrant shops, cafes, and restaurants of Pimlico, Battersea Power Station, and the green haven of Battersea Park and the nearest transport links can be found at Pimlico and Victoria. Offered with no onward chain, this stunning apartment promises a seamless move into a life of luxury by the river.

Please note some of the images have been computer generated.

- Rare opportunity to acquire a stunning three-bedroom penthouse riverside apartment
- Prime location in a sought-after red brick mansion block on the banks of the River Thames
- Spacious lateral layout with uninterrupted views of Battersea Power Station and Nine Elms
- Large reception room ideal for entertaining and a separate stylish kitchen
- Includes 24-hour concierge, lift access, and allocated underground parking, no onward chain
- Conveniently located near Pimlico, Battersea Power Station, Battersea Park, with excellent transport links

Asking Price £1,950,000

Score	Energy rating	Current	Potential
92+	A		
81-91	B		
69-80	C		
55-68	D		
39-54	E	50 E	50 E
21-38	F		
1-20	G		

Tenure: Leasehold 144 years 3 months

Service Charge: £15000 Per annum

Ground Rent: Peppercorn

Local Authority: City of Westminster

Council Tax Band: H

Chestertons Westminster & Pimlico Sales

105 Wilton Road

London

SW1V 1DZ

westminster@chestertons.co.uk

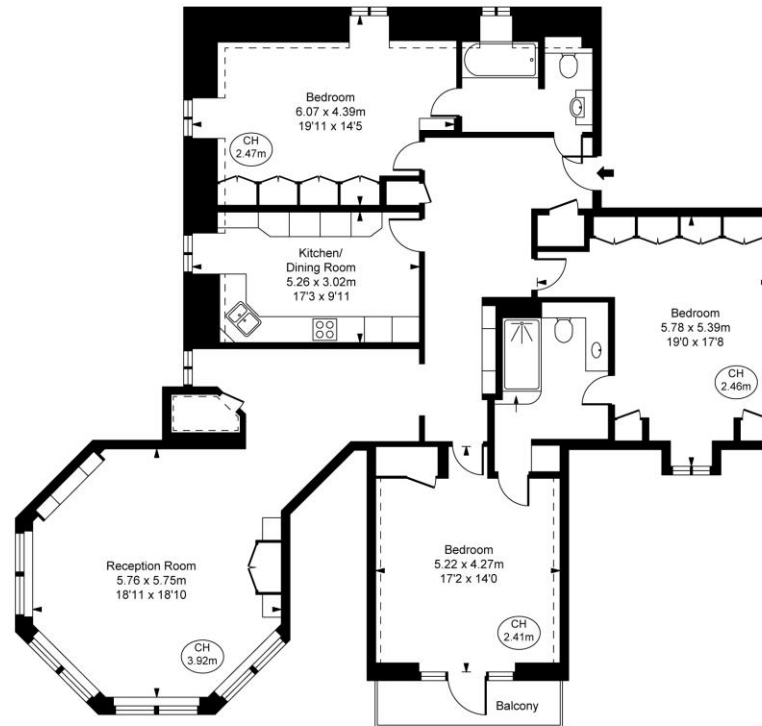
020 3040 8201

chestertons.co.uk

Millennium House, SW1V

Approximate Gross Internal Area
159.41 sq m / 1,716 sq ft

(Including restricted height
under 1.5m C = = =)
(CH = Ceiling Heights)



Fourth Floor

This plan is not to scale. It is for guidance and not for valuation purposes.
All measurements and areas are approximate only, and have been prepared in accordance with the current edition of the RICS Code of Measuring Practice.
© Fulham Performance

Chesterton UK Services Limited trading as Chestertons for themselves and for the vendor of this property whose agents they are, give notice that (i) these particulars do not constitute any part of an offer or contract, (ii) all statements contained within these particulars are made without responsibility on the part of Chestertons or the vendor, (iii) whilst made in good faith, none of the statements contained within these particulars are to be relied upon as a statement or representation of fact, (iv) any intending purchasers must satisfy themselves by inspection or otherwise as to the correctness of each of the statements contained within these particulars, (v) the vendor does not make or give either Chestertons or any person in their employment any authority to make or give representation or warranty whatsoever in relation to this property. Wide angle lenses may be used. ©Copyright Chestertons | Chesterton UK Services Limited | Registered Office 40 Connaught Street, Hyde Park, London W2 2AB Registered Company Number 05334580.



This paper is
100% recyclable