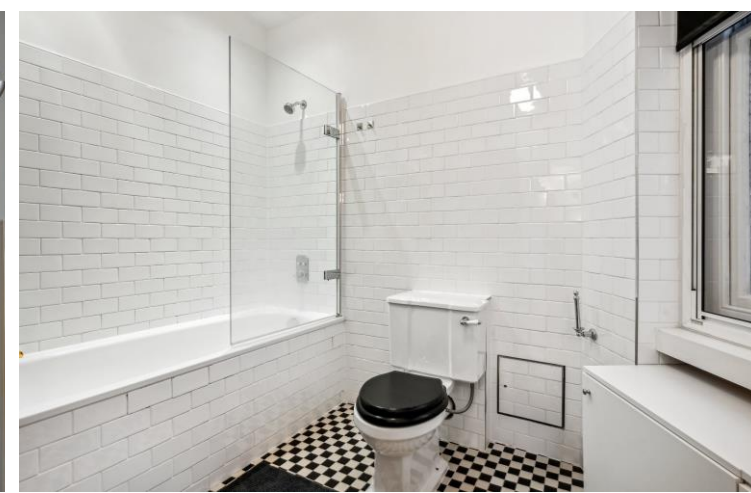




Westminster Palace Gardens  
Artillery Row, SW1P

CHESTERTONS







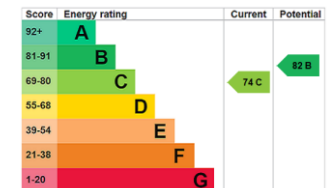


A contemporary and spacious 846sq ft one bedroom apartment on the second floor of this beautiful mansion building Westminster Palace Gardens. The apartment features a bright and spacious interior with high ceilings and modern finishes. Including a large open plan with a bespoke kitchen, spacious reception room, a well sized double bedroom with built in storage, family bathroom and a separate utility cupboard. The property further benefits from wooden flooring, porter, lift access, and is offered with no onward chain.

Westminster Palace Gardens is conveniently located for the shops, cafes and restaurants of Westminster and St James's Park as well as a number of London's most famous landmarks. The transport links can be found at St James's Park (Circle and District line) and Westminster (Jubilee, Circle and District line)

- A Very Spacious Lateral Second Floor Apartment
- Large 846sq ft One Bedroom One Bathroom
- A Generous Open Plan Reception Room
- Modern Kitchen Including a Dining Area.
- Lift Access and Porter
- No Onward Chain

Asking Price £725,000



**Tenure:** Leasehold 133 years from 22 May 2012  
**Service Charge:** £8252 (Approximately)  
**Ground Rent:** £0  
**Local Authority:** City of Westminster  
**Council Tax Band:** D

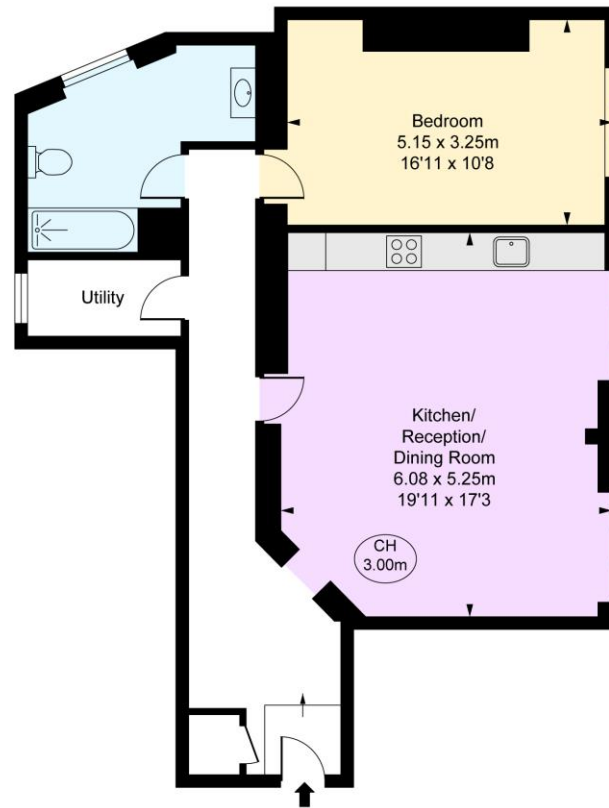
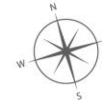
*Chestertons Westminster & Pimlico Sales*

105 Wilton Road  
 London  
 SW1V 1DZ  
 westminster@chestertons.co.uk  
 020 3040 8201  
 chestertons.co.uk

Westminster Palace Gardens,  
Artillery Row, SW1P

Approximate Gross Internal Area  
78.61 sq m / 846 sq ft

( CH = Ceiling Heights )



Second Floor

**FULHAM**  
**PERFORMANCE**  
PRECISION YOU CAN TRUST

This plan is not to a given scale. A detailed layout plan with dimensions is available on request.  
All quoted measurements and areas are within 1% tolerance and have been prepared in accordance with industry standards as defined in theRICS Code of Measuring Practice  
© Fulham Performance

Chesterton UK Services Limited trading as Chestertons for themselves and for the vendor of this property whose agents they are, give notice that (i) these particulars do not constitute any part of an offer or contract, (ii) all statements contained within these particulars are made without responsibility on the part of Chestertons or the vendor, (iii) whilst made in good faith, none of the statements contained within these particulars are to be relied upon as a statement or representation of fact, (iv) any intending purchasers must satisfy themselves by inspection or otherwise as to the correctness of each of the statements contained within these particulars, (v) the vendor does not make or give either Chestertons or any person in their employment any authority to make or give representation or warranty whatsoever in relation to this property. Wide angle lenses may be used. ©Copyright Chestertons | Chesterton UK Services Limited | Registered Office 40 Connaught Street, Hyde Park, London W2 2AB Registered Company Number 05334580.



This paper is  
100% recyclable