



Ashley Gardens
Emery Hill Street, SW1P

Asking Price £1,150,000

CHESTERTONS





An impressive lateral 3 bedroom apartment located on the fifth (top) floor of this grand Victorian mansion block. The property comprises 3 bedrooms, family bathroom, separate WC and a large reception room with access onto a private balcony. There are numerous period features retained through-out the property and other benefits include a porter and lift access.

The mansion flats, dating from the 1890s are located in a very quiet conservation area close to the magnificent Westminster Cathedral just moments from shopping and restaurants in Victoria Street and Cardinal Place with three theatres and a Curzon cinema. Nearby Pimlico with its street market and shops offers a village atmosphere while Victoria Station, providing national rail services and underground connections, is in close proximity. The Royal Parks at St James's and Green Park are not much further, as are many renowned and iconic landmarks such as Buckingham Palace, Westminster Abbey, the Houses of Parliament and the River Thames. West End theatres, galleries and the South Bank Arts Centres are within easy reach.

- Fifth (top) floor of a grand Victorian mansion block in a quiet conservation area near Westminster Cathedral.
- 3 bedrooms, family bathroom, large reception room, private balcony, and retained period features.
- Additional Benefits: Porter service and lift access in the building.
- Close to iconic sites like Buckingham Palace, Westminster Abbey, the River Thames, and West End theatres.
- No onward chain

Tenure: Leasehold Plus Share of Freehold - 225 years from 24 June 1988

Service Charge: £6,285 Per Annum

Ground Rent: Peppercorn

Local Authority: City of Westminster

Council Tax Band: F

Chestertons Westminster & Pimlico Sales

105 Wilton Road

London

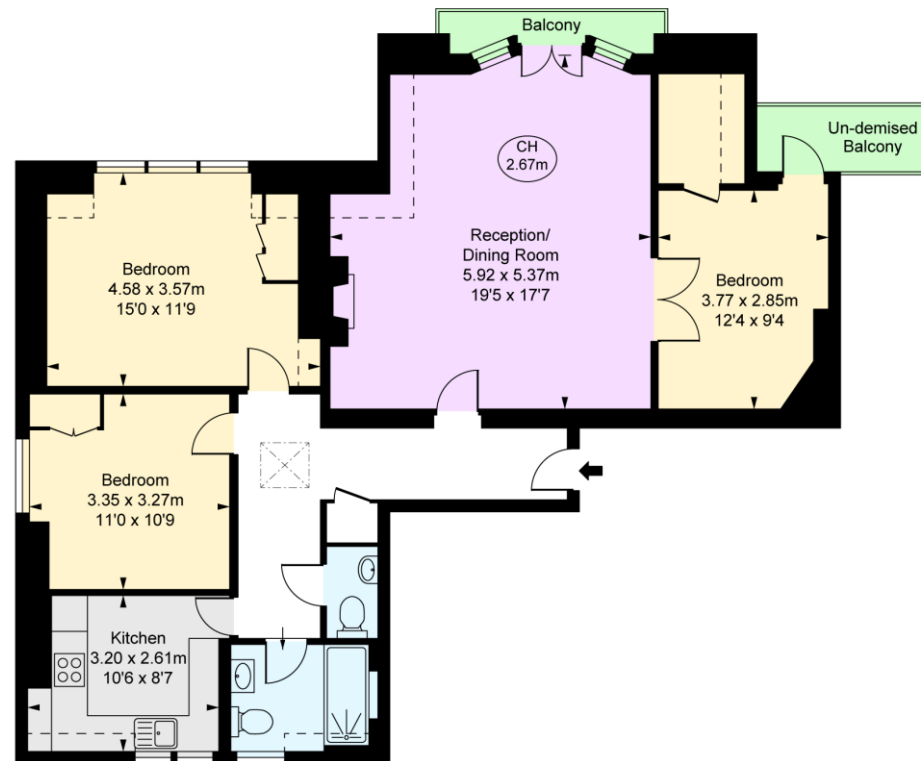
SW1V 1DZ

westminster@chestertons.co.uk

020 3040 8201

[chestertons.co.uk](https://www.chestertons.co.uk)

Ashley Gardens,
Emery Hill Street, SW1P
Approximate Gross Internal Area
97.41 sq m / 1,049 sq ft
(Including restricted height
under 1.5m [- - - -])
(CH = Ceiling Heights)



Fifth Floor

FULHAM
PERFORMANCE
PRECISION YOU CAN TRUST

This plan is not to a given scale. A detailed layout plan with dimensions is available on request.
All quoted measurements and areas are within 1% tolerance and have been prepared in accordance with industry standards as defined in the RICS Code of Measuring Practice
© Fulham Performance

Chesterton UK Services Limited trading as Chestertons for themselves and for the vendor of this property whose agents they are, give notice that (i) these particulars do not constitute any part of an offer or contract, (ii) all statements contained within these particulars are made without responsibility on the part of Chestertons or the vendor, (iii) whilst made in good faith, none of the statements contained within these particulars are to be relied upon as a statement or representation of fact, (iv) any intending purchasers must satisfy themselves by inspection or otherwise as to the correctness of each of the statements contained within these particulars, (v) the vendor does not make or give either Chestertons or any person in their employment any authority to make or give representation or warranty whatsoever in relation to this property. Wide angle lenses may be used. ©Copyright Chestertons | Chesterton UK Services Limited | Registered Office 40 Connaught Street, Hyde Park, London W2 2AB Registered Company Number 05334580.



This paper is
100% recyclable