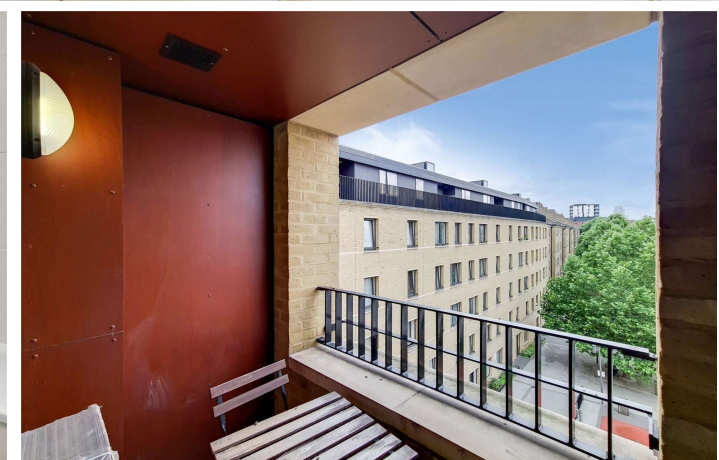




Block Z
Peabody Avenue, SW1V

CHESTERTONS



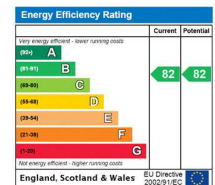


A light, modern and spacious one double bedroom apartment on the fourth floor (with lift) within this purpose built development further comprising open plan kitchen with integrated appliances a good size reception, bathroom and private balcony. The property is offered with no onward chain.

Peabody Avenue is conveniently located for the shops, cafes and restaurants of Pimlico, the river Thames, Battersea Park and Battersea Power Station. The nearest transport links can be found at Pimlico (Victoria line) and Victoria (Victoria, Circle and District lines, mainline station and Gatwick Express).

- A Bright and Well Laid-out Apartment
- Reception Room and One Double Bedroom
- Modern Kitchen and Bathroom
- Private Balcony
- Modern Block
- No Onward Chain

Asking Price £475,000



Tenure: Leasehold 111 years 3 months (Lease Expires on 1st January 2136)

Service Charge: £2,050 (Approximately) Includes heating and hot water

Ground Rent: £0

Local Authority: City Of Westminster

Council Tax Band: D

Chestertons Westminster & Pimlico Sales

105 Wilton Road

London

SW1V 1DZ

westminster@chestertons.co.uk

020 3040 8201

chestertons.co.uk

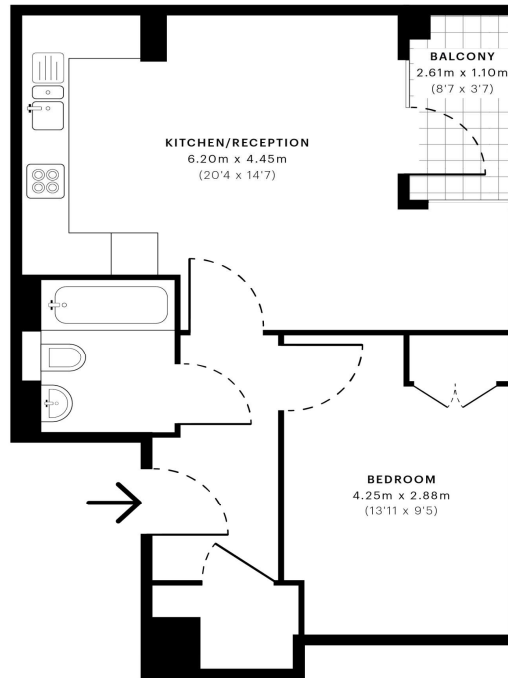


Peabody Avenue, SW1V

CAPTURE DATE 05/07/2021 LASER SCAN POINTS 1,431,716

GROSS INTERNAL AREA

47.25 sqm / 508.59 sqft



— Fourth Floor

 **GROSS INTERNAL AREA (GIA)**
The footprint of the property
47.25 sqm / 508.59 sqft

 **NET INTERNAL AREA (NIA)**
Excludes walls and external features
Includes washrooms, restricted head height
44.60 sqm / 480.07 sqft

 **EXTERNAL STRUCTURAL FEATURES**
Balconies, terraces, verandas etc.
2.77 sqm / 29.82 sqft

 **RESTRICTED HEAD HEIGHT**
Limited use area under 1.5 m
0.00 sqm / 0.00 sqft



Spec Verified floor plans are produced in accordance with Royal Institution of Chartered Surveyors' Property Measurement Standards. Plots and gardens are illustrative only and excluded from all area calculations. Due to rounding, numbers may not add up precisely. All measurements shown for the individual room lengths and widths are the maximum points of measurements captured in the scan.

IPMS 3B RESIDENTIAL 50.58 sqm / 544.44 sqft
IPMS 3C RESIDENTIAL 48.72 sqm / 524.42 sqft

scan id: 60d9f197f78aa830d4c0c51w05f

Chesterton UK Services Limited trading as Chestertons for themselves and for the vendor of this property whose agents they are, give notice that (i) these particulars do not constitute any part of an offer or contract, (ii) all statements contained within these particulars are made without responsibility on the part of Chestertons or the vendor, (iii) whilst made in good faith, none of the statements contained within these particulars are to be relied upon as a statement or representation of fact, (iv) any intending purchasers must satisfy themselves by inspection or otherwise as to the correctness of each of the statements contained within these particulars, (v) the vendor does not make or give either Chestertons or any person in their employment any authority to make or give representation or warranty whatsoever in relation to this property. Wide angle lenses may be used. ©Copyright Chestertons | Chesterton UK Services Limited | Registered Office 40 Connaught Street, Hyde Park, London W2 2AB Registered Company Number 05334580.



This paper is 100% recyclable