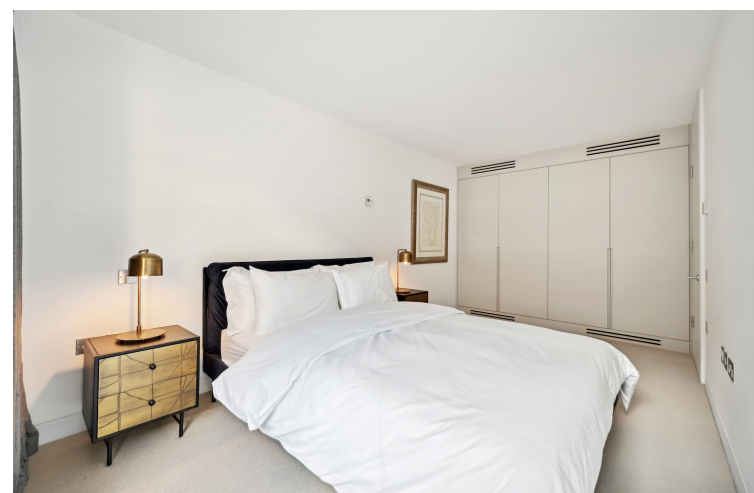




Parliament View Apartments
1 Albert Embankment, SE1

CHESTERTONS





Be captivated by this stunning and newly refurbished flat within a striking riverside development. Step inside and discover a light-filled open plan reception room, perfect for entertaining, that seamlessly flows into a bespoke kitchen, three double bedrooms and two bathrooms (1 en-suite). The property benefits from air-cooling through-out and the real highlight is the stunning view of the river Thames and the Houses of Parliament.

Residents enjoy 24-hour concierge, gym, and a dedicated underground parking space. Offered with no onward chain, this exceptional property is your gateway to some of London's most famous landmarks, amenities and excellent transport links.

- Stunning, newly refurbished flat in a riverside development
- Light-filled open plan reception room, ideal for entertaining
- Bespoke kitchen, 3 double bedrooms, and 2 bathrooms (1 en-suite)
- Breath-taking views of the River Thames and Houses of Parliament
- 24-hour concierge, gym, and underground parking included
- Offered with no onward chain for a quick and easy move

Asking Price £1,450,000

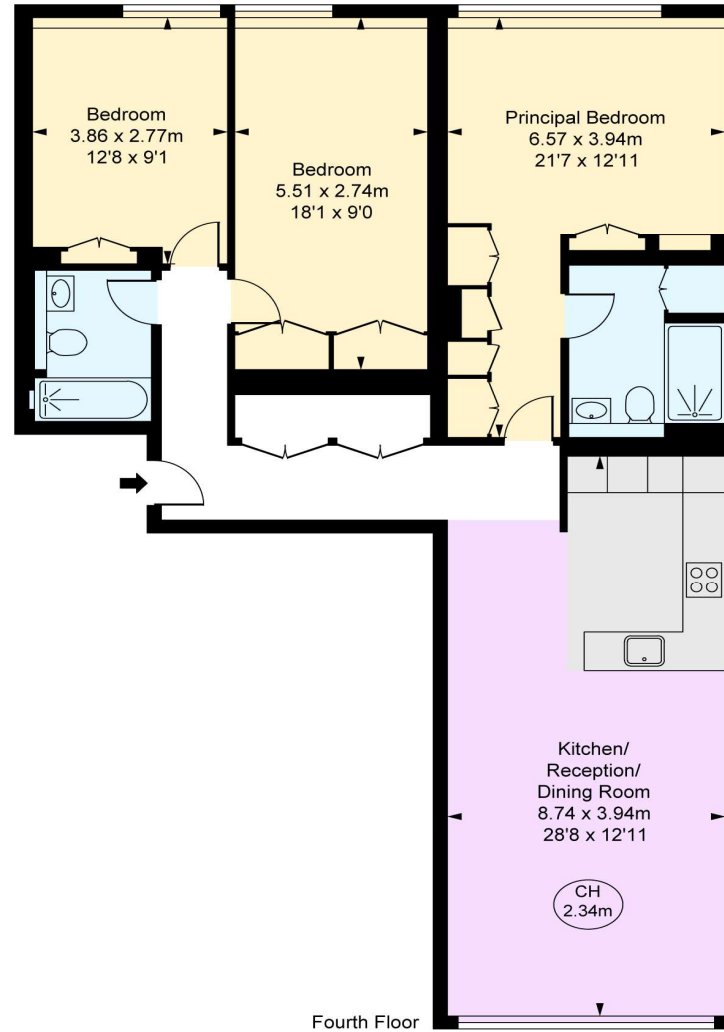
Energy Efficiency Rating		Current	Potential
<small>Most energy efficient - lowest running costs</small> A (92-100)			
<small>Very good energy efficiency</small> B (81-91)			
<small>Good energy efficiency</small> C (69-80)			
<small>Fair energy efficiency</small> D (55-68)			
<small>Below average energy efficiency</small> E (39-54)			
<small>Low energy efficiency</small> F (21-38)			
<small>Least energy efficient - highest running costs</small> G (1-20)			
<small>Not energy efficient - higher running costs</small>		79	79
<small>England, Scotland & Wales</small>		<small>EU Directive 2002/91/EC</small>	

Tenure: Leasehold – 999 Years (less 3 days) from 25 December 1997
Service Charge: £7,800 (Approximately)
Ground Rent: £300
Local Authority: London Borough Of Lambeth
Council Tax Band: G

Chestertons Westminster & Pimlico Sales

105 Wilton Road
 London
 SW1V 1DZ
 westminster@chestertons.co.uk
 020 3040 8201
 chestertons.co.uk

Parliament View,
Albert Embankment, SE1
Approximate Gross Internal Area
104.94 sq m / 1,130 sq ft
(CH = Ceiling Heights)



Fourth Floor

This plan is not to scale. It is for guidance and not for valuation purposes.
All measurements and areas are approximate only, and have been prepared in accordance with the current edition of the RICS Code of Measuring Practice.
© Fulham Performance

Chesterton Global Ltd trading as Chestertons for themselves and for the vendor of this property whose agents they are, give notice that (i) these particulars do not constitute any part of an offer or contract, (ii) all statements contained within these particulars are made without responsibility on the part of Chestertons or the vendor, (iii) whilst made in good faith, none of the statements contained within these particulars are to be relied upon as a statement or representation of fact, (iv) any intending purchasers must satisfy themselves by inspection or otherwise as to the correctness of each of the statements contained within these particulars, (v) the vendor does not make or give either Chestertons or any person in their employment any authority to make or give representation or warranty whatsoever in relation to this property. Wide angle lenses may be used. ©Copyright Chestertons | Chesterton Global Ltd | Registered Office 40 Connaught Street, Hyde Park, London W2 2AB Registered Company Number 05334580.



This paper is
100% recyclable