



Horseferry Road
London, SW1P

CHESTERTONS





An outstanding three double bedroom 4th floor luxury apartment situated within a very desirable building in the heart of Westminster, moments from the River Thames, Houses of Parliament and Buckingham Palace. This light and spacious apartment further comprises a generously sized reception room and dining room, a beautifully designed, modern open plan kitchen with fully integrated appliances, two luxury bathrooms (1 en-suite), fitted wardrobes in the bedrooms and 2 private balconies with views of the historic St Johns Gardens.

Further benefits include lift access to all floors, the use of a 24 hour concierge, underfloor heating through-out, air-cooling, superfast broadband (up to 1 gigabit) and a fully equipped fitness suite as well as access to an attractive landscaped courtyard garden and allocated secure underground parking.

The Courthouse benefits from fantastic Westminster location, being only short walk from St James' Park (District and Circle lines) and Westminster (Jubilee, District and Circle lines) underground stations, as well as Victoria mainline and underground station (Victoria, District and Circle lines). There is a great selection of shops, cafes, bars and restaurants on Victoria Street and the surrounding area.

- Stunning Three Double Bedroom Flat
- Open Plan Reception Room with Views of St Johns Gardens
- 24 Hour Concierge
- Access to Well Equipped Gym
- Allocated Parking Space
- Two Private Balconies + Communal Garden

Asking Price £2,000,000

Tenure: Leasehold – 999 Years from 25 March 2014
Service Charge: £9,132 (Approx. incl reserve fund)
Ground Rent: £1,250
Local Authority: City of Westminster
Council Tax Band: G

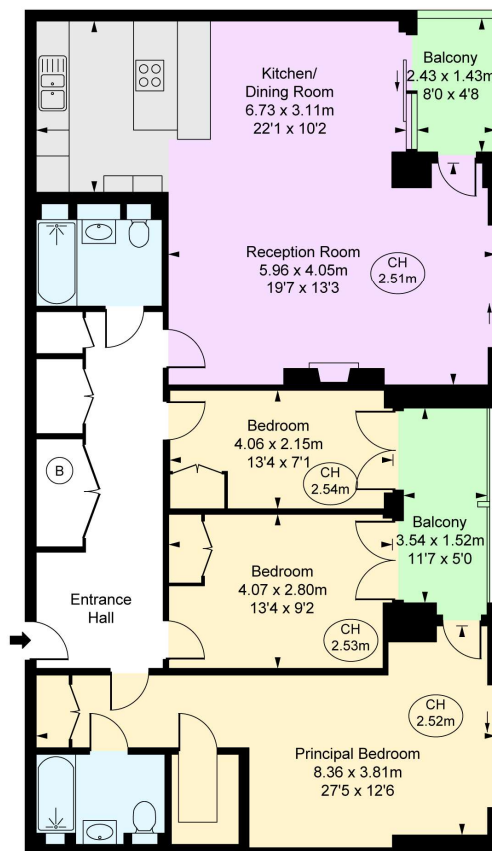
Chestertons Westminster & Pimlico Sales

105 Wilton Road
London
SW1V 1DZ
westminster@chestertons.co.uk
020 3040 8201
chestertons.co.uk

Horseferry Road SW1P
Approximate Gross Internal Area
111.31 sq m / 1,198 sq ft



(CH = Ceiling Heights)



Fourth Floor

This plan is not to scale. It is for guidance and not for valuation purposes.
All measurements and areas are approximate only, and have been prepared in accordance with the current edition of the RICS Code of Measuring Practice.
© Fulham Performance

Chesterton Global Ltd trading as Chestertons for themselves and for the vendor of this property whose agents they are, give notice that (i) these particulars do not constitute any part of an offer or contract, (ii) all statements contained within these particulars are made without responsibility on the part of Chestertons or the vendor, (iii) whilst made in good faith, none of the statements contained within these particulars are to be relied upon as a statement or representation of fact, (iv) any intending purchasers must satisfy themselves by inspection or otherwise as to the correctness of each of the statements contained within these particulars, (v) the vendor does not make or give either Chestertons or any person in their employment any authority to make or give representation or warranty whatsoever in relation to this property. Wide angle lenses may be used. ©Copyright Chestertons | Chesterton Global Ltd | Registered Office 40 Connaught Street, Hyde Park, London W2 2AB Registered Company Number 05334580.



This paper is
100% recyclable