



Lewcos House  
57-63 Regency Street, SW1P

CHESTERTONS



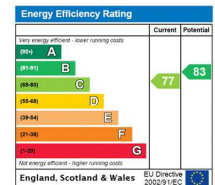


Seeking a stylish two-bedroom flat situated within a well-maintained block in the heart of Westminster? Step inside and discover a light-filled haven featuring an open-plan reception room that seamlessly flows into a modern kitchen, perfect for entertaining or unwinding. The two double bedrooms provide ample living space, with one boasting the added luxury of an en-suite bathroom.

This apartment caters to your comfort with amenities such as lift access and a designated underground parking space, eliminating the stress of finding street parking. Stepping outside, you'll find yourself immersed in the vibrant energy of Westminster, with an excellent range of shops, restaurants, and cultural attractions right on your doorstep. Additionally, excellent transport links connect you to the wider city, including Victoria, St. James's Park, and Westminster stations, ensuring you're never far from the action. This exceptional flat offers the perfect blend of contemporary style, convenient living, and a prime location making it an ideal choice for

- Modern two double bedroom flat within a well maintained block
- Two bathrooms (including one en-suite)
- Open plan reception room with a modern kitchen
- Lift access for added convenience
- Allocated underground parking space
- Prime location in the heart of Westminster, close to amenities and transport links

Offers in excess of £700,000



**Tenure:** Leasehold – 125 Years from 25 December 1997

**Service Charge:** £3,372p.a. (Approximately)

**Ground Rent:** £125p.a.

**Local Authority:** Westminster

**Council Tax Band:** G

*Chestertons Westminster & Pimlico Sales*

105 Wilton Road

London

SW1V 1DZ

westminster@chestertons.co.uk

020 3040 8201

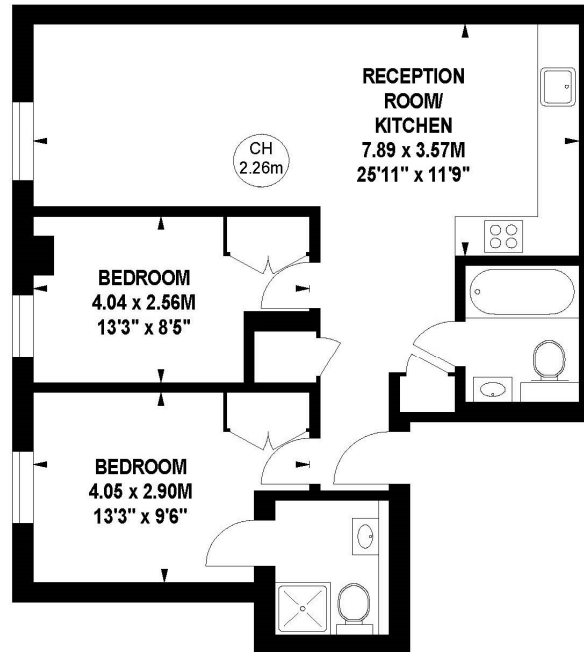
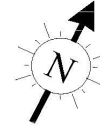
chestertons.co.uk

# Lewcos House, SW1P

Approximate gross internal area

61.40 sq m / 661 sq ft

Key :  
CH - Ceiling Height



## First Floor

The floor plan is not to scale and measurements and areas shown are approximate and therefore should be used for illustrative purposes only.

The plan has been prepared in accordance with the RICS code of Measuring Practice and whilst we have confidence in the information produced, it must not be relied on.

If there is any aspect of particular importance, you should carry out or commission your own inspection of the property.

Copyright of FeaturePRO.

Chesterton Global Ltd trading as Chestertons for themselves and for the vendor of this property whose agents they are, give notice that (i) these particulars do not constitute any part of an offer or contract, (ii) all statements contained within these particulars are made without responsibility on the part of Chestertons or the vendor, (iii) whilst made in good faith, none of the statements contained within these particulars are to be relied upon as a statement or representation of fact, (iv) any intending purchasers must satisfy themselves by inspection or otherwise as to the correctness of each of the statements contained within these particulars, (v) the vendor does not make or give either Chestertons or any person in their employment any authority to make or give representation or warranty whatsoever in relation to this property. Wide angle lenses may be used. ©Copyright Chestertons | Chesterton Global Ltd | Registered Office 40 Connaught Street, Hyde Park, London W2 2AB Registered Company Number 05334580.



This paper is  
100% recyclable