



Parliament View  
Albert Embankment, SE1

CHESTERTONS





A wonderfully bright two double bedroom apartment situated within a striking riverside development further comprising large reception room, separate kitchen and two bathrooms (1 en-suite). The property benefits from all principal rooms facing the river allowing for stunning views and further benefits from 24 hour concierge, lift and gym access and allocated off street parking. The property is offered with no onward chain.

Parliament View is conveniently situated moments from some of London's most famous landmarks including The Houses of Parliament, Big Ben, London Eye and is moments from the cafes, restaurants and cultural venues along the Southbank. The nearest transport can be found at Westminster (Jubilee, District and Circle lines) and Vauxhall (Victoria line and the mainline station).

- Wonderfully bright two double bedroom apartment in a striking riverside development.
- Large reception room, separate kitchen, and two bathrooms (one en-suite).
- All principal rooms boast stunning river views.
- 24-hour concierge, lift and gym access, and allocated off-street parking.
- Offered with no onward chain for a smooth purchase.
- Prime location moments from iconic landmarks and cultural venues. Excellent transport links nearby.

Asking Price £1,000,000

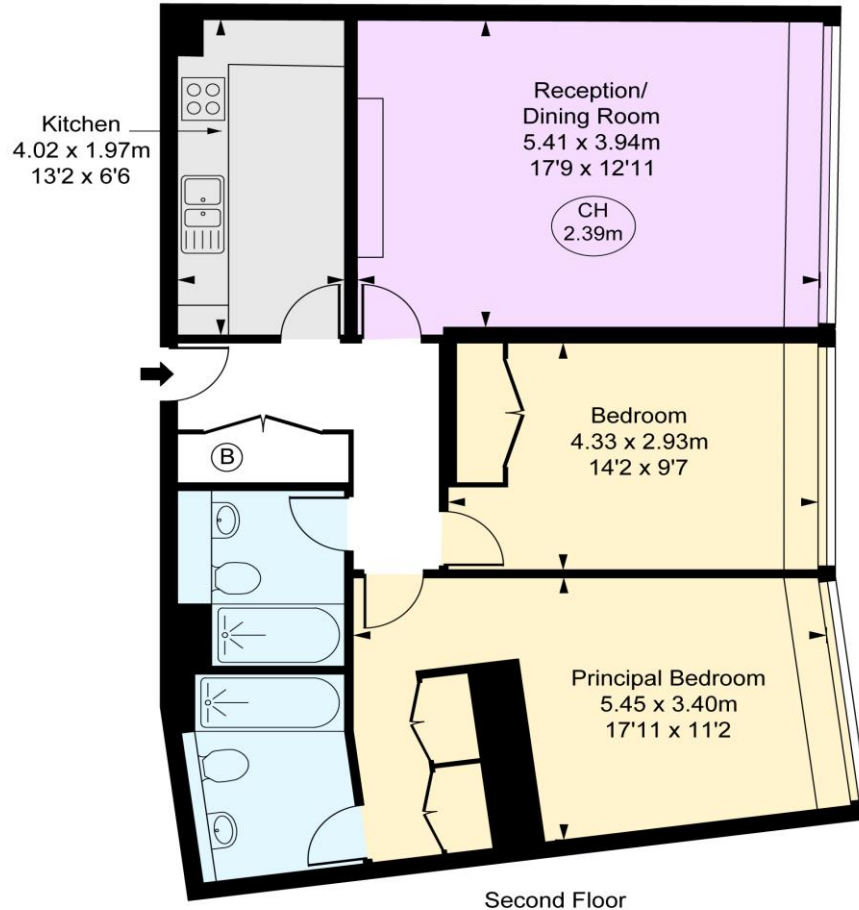
Energy Efficiency Rating		Current	Potential
92-100	A		
81-91	B		
69-80	C		
55-68	D		
39-54	E		
21-38	F		
1-20	G		
Not energy efficient - higher running costs			
England, Scotland & Wales		83	85
EU Directive 2002/91/EC			

**Tenure:** Leasehold – 999 Years (less 3 days) from 25 December 1997  
**Service Charge:** £6,814 (Approx. including reserve fund)  
**Ground Rent:** £250  
**Local Authority:** London Borough Of Lambeth  
**Council Tax Band:** G

*Chestertons Westminster & Pimlico Sales*

105 Wilton Road  
 London  
 SW1V 1DZ  
 westminster@chestertons.co.uk  
 020 3040 8201  
 chestertons.co.uk

Parliament View,  
 Albert Embankment, SE1  
 Approximate Gross Internal Area  
 80.27 sq m / 864 sq ft  
 ( CH = Ceiling Heights )



Second Floor

This plan is not to scale. It is for guidance and not for valuation purposes.  
 All measurements and areas are approximate only, and have been prepared in accordance with the current edition of the RICS Code of Measuring Practice.  
 © Fulham Performance

Chesterton Global Ltd trading as Chestertons for themselves and for the vendor of this property whose agents they are, give notice that (i) these particulars do not constitute any part of an offer or contract, (ii) all statements contained within these particulars are made without responsibility on the part of Chestertons or the vendor, (iii) whilst made in good faith, none of the statements contained within these particulars are to be relied upon as a statement or representation of fact, (iv) any intending purchasers must satisfy themselves by inspection or otherwise as to the correctness of each of the statements contained within these particulars, (v) the vendor does not make or give either Chestertons or any person in their employment any authority to make or give representation or warranty whatsoever in relation to this property. Wide angle lenses may be used. ©Copyright Chestertons | Chesterton Global Ltd | Registered Office 40 Connaught Street, Hyde Park, London W2 2AB Registered Company Number 05334580.



This paper is  
 100% recyclable