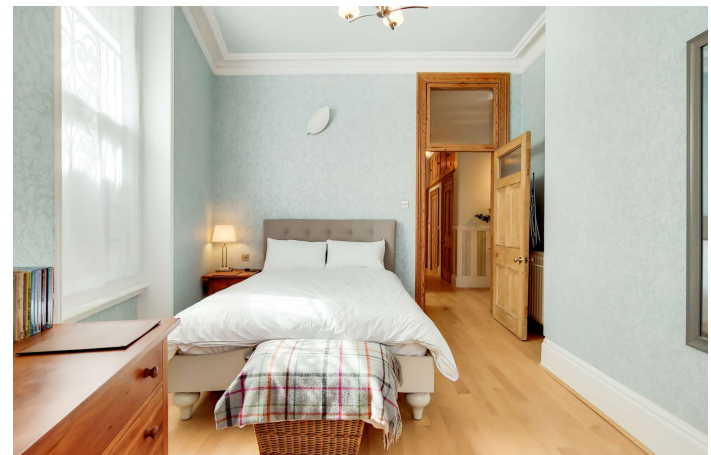
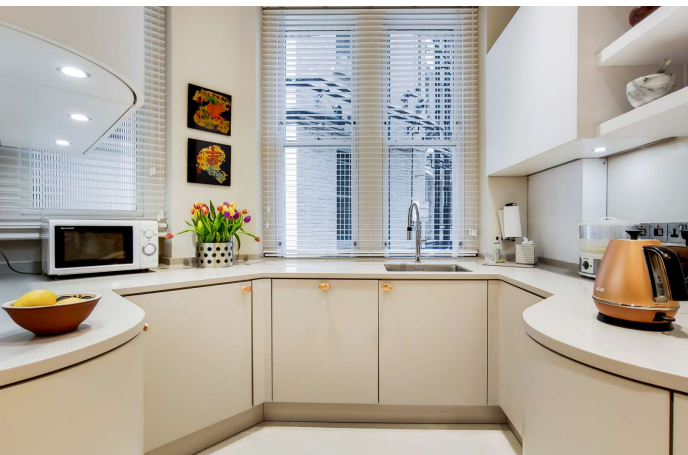




Morpeth Terrace
Westminster, SW1P

CHESTERTONS



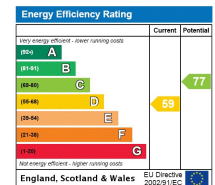


An immaculate example of a spacious mansion flat on the raised lower ground floor of this exclusive red brick Westminster building. The flat is incredibly light, owed in part to the grand ceiling height throughout and in part to the fact that this is a proper raised lower ground floor flat with half the windows above ground level; some of the windows also have the original lead detailing of the period. The accommodation comprises four double bedrooms, two marvellous reception rooms, a large, modern eat-in kitchen with exposed brickwork, large central hallway and two smart bathrooms. This is a special flat and would be a wonderful home or generous London base.

Excellently located, This property is enviably close to iconic landmarks like Buckingham Palace and the Houses of Parliament and a great variety of shops, cafes and restaurants. There are excellent transport links at Victoria Station (Victoria, District and Circle lines, mainline station and Gatwick Express).

- Four Double Bedrooms
- Two Bathrooms
- c.1600 Square Foot
- Immaculate Condition
- Solid Maple Floors
- Share of Freehold

Asking Price £1,100,000



Tenure: Leasehold – expiring 29/09/3006
Service Charge: £3,900 p.a. Approximately
Ground Rent: £0
Local Authority: City of Westminster
Council Tax Band: G

Chestertons Westminster & Pimlico Sales

105 Wilton Road
 London
 SW1V 1DZ

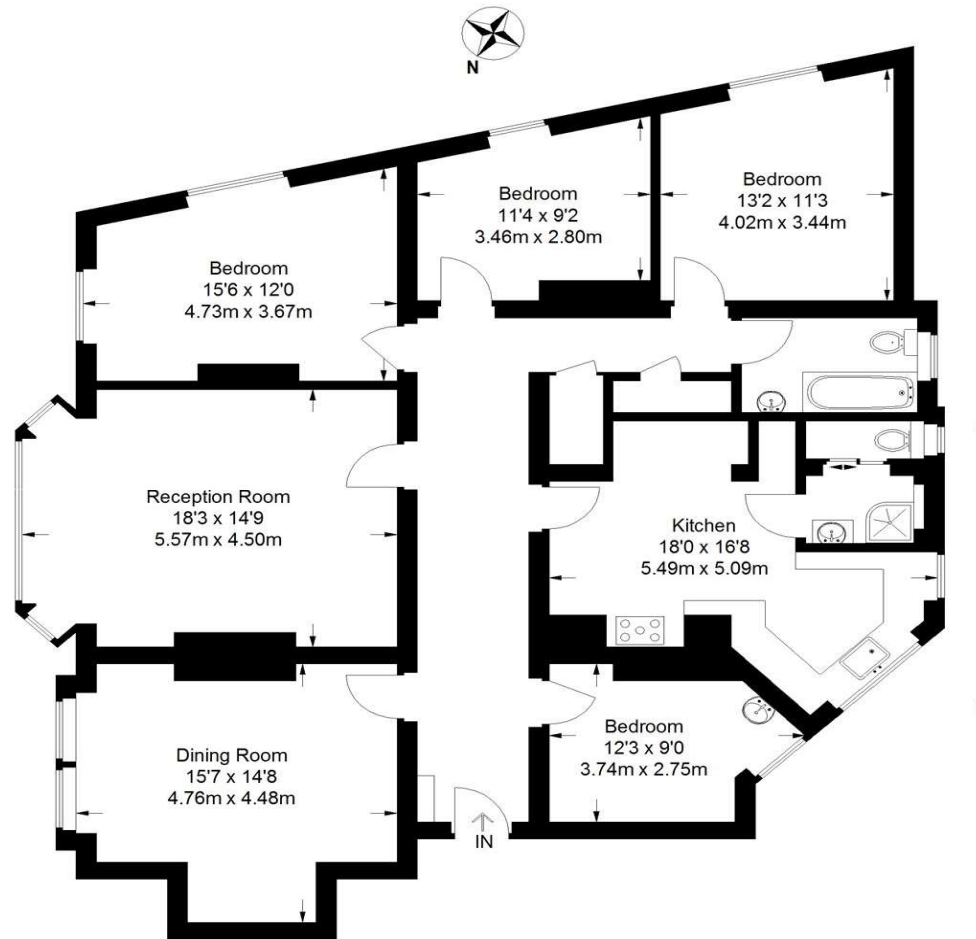
westminster@chestertons.co.uk

020 3040 8201

chestertons.co.uk

Morpeth Mansions

Approximate Gross Internal Area
1598 sq ft / 148.5 sq m



Lower Ground Floor

Not to scale, for guidance only and must not be relied upon as a statement of fact.
All measurements and areas are approximate only and have been prepared in
accordance with the current edition of the RICS Code of Measuring Practice.

Chesterton Global Ltd trading as Chestertons for themselves and for the vendor of this property whose agents they are, give notice that (i) these particulars do not constitute any part of an offer or contract, (ii) all statements contained within these particulars are made without responsibility on the part of Chestertons or the vendor, (iii) whilst made in good faith, none of the statements contained within these particulars are to be relied upon as a statement or representation of fact, (iv) any intending purchasers must satisfy themselves by inspection or otherwise as to the correctness of each of the statements contained within these particulars, (v) the vendor does not make or give either Chestertons or any person in their employment any authority to make or give representation or warranty whatsoever in relation to this property. Wide angle lenses may be used. ©Copyright Chestertons | Chesterton Global Ltd | Registered Office 40 Connaught Street, Hyde Park, London W2 2AB Registered Company Number 05334580.



This paper is
100% recyclable