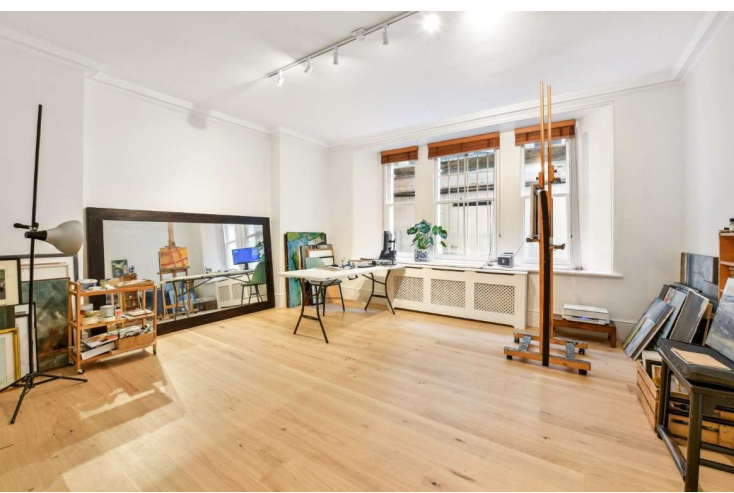




Carlisle Mansions  
Carlisle Place, SW1P

CHESTERTONS









A grand, very well presented, lower ground floor mansion flat located on one of Westminster's most desirable streets. This impressive property comprises a good sized master bedroom with en-suite, three double bedrooms, a family bathroom, spacious modern eat in kitchen and a large reception room. The property benefits from high ceilings, wooden flooring and portage.

Carlisle Mansions, a sought after mansion block conveniently situated for local amenities and the extensive transport facilities of Westminster (Jubilee, Circle and District lines) and Victoria (Victoria, Circle and District lines, Mainline station and Gatwick Express).

- Laterally Spacious Mansion Flat
- Sought After Block in the Heart of Westminster
- Four Bedrooms and Two Bathrooms
- Spacious Reception room
- Modern Eat-in Kitchen

Asking Price £1,500,000

Energy Efficiency Rating		
	Current	Potential
Very energy efficient - lower running costs		
A (91-100)		
B (81-90)		
C (69-80)		
D (55-68)		
E (39-54)		
F (21-38)		
G (1-20)		
Not energy efficient - higher running costs		
EU Directive 2002/91/EC		
England, Scotland & Wales		

**Tenure:** Leasehold - 143 years 8 months remaining on lease

**Service Charge:** £8750 (£7,232 service charge / £1,528 sinking fund contribution)

**Ground Rent:** £0 Peppercorn

**Local Authority:** Westminster

**Council Tax Band:** F

*Chestertons Westminster & Pimlico Sales*

105 Wilton Road

London

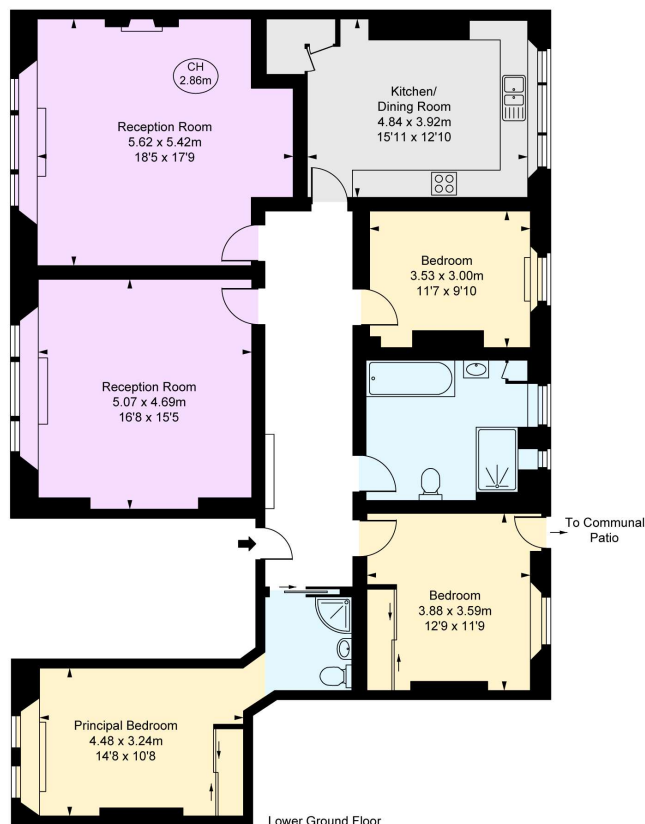
SW1V 1DZ

westminster@chestertons.co.uk

020 3040 8201

chestertons.co.uk

Carlisle Mansions, SW1P  
 Approximate Gross Internal Area  
 153.46 sq m / 1,652 sq ft  
 ( CH = Ceiling Heights )



This plan is not to scale. It is for guidance and not for valuation purposes.  
 All measurements and areas are approximate only, and have been prepared in accordance with the current edition of the RICS Code of Measuring Practice.  
 © Fulham Performance.

Chesterton Global Ltd trading as Chestertons for themselves and for the vendor of this property whose agents they are, give notice that (i) these particulars do not constitute any part of an offer or contract, (ii) all statements contained within these particulars are made without responsibility on the part of Chestertons or the vendor, (iii) whilst made in good faith, none of the statements contained within these particulars are to be relied upon as a statement or representation of fact, (iv) any intending purchasers must satisfy themselves by inspection or otherwise as to the correctness of each of the statements contained within these particulars, (v) the vendor does not make or give either Chestertons or any person in their employment any authority to make or give representation or warranty whatsoever in relation to this property. Wide angle lenses may be used. ©Copyright Chestertons | Chesterton Global Ltd | Registered Office 40 Connaught Street, Hyde Park, London W2 2AB Registered Company Number 05334580.



This paper is  
100% recyclable