



Sussex Street  
London, SW1V

CHESTERTONS





Experience refined elegance in this exquisite period double fronted house, nestled within the prestigious Westmoreland Triangle area of Pimlico. Spanning four generous floors, this residence boasts a seamless blend of classic charm and modern comforts. Entertain in the two spacious reception rooms, and savour gourmet meals prepared in the large kitchen with a delightful dining area. There is a first-floor master suite, featuring a separate dressing room and an opulent en-suite bathroom. Two additional double bedrooms and a family bathroom provide ample space for family or guests, with an additional ground floor WC for added convenience. Ascend to the expansive rooftop terrace and enjoy captivating views. The property further benefits from four vaults (two of which have been tanked) that offer abundant storage solutions or development opportunities.

This property enjoys a convenient location, just moments from the shops, cafes, and restaurants of Pimlico and is within close proximity of Sloane Square and Kings Road. Enjoy the green open spaces of Battersea Park, the iconic Battersea Power Station development or stroll along the River Thames. Commuting is effortless with Victoria and Pimlico stations within easy reach, offering swift connections throughout London and beyond.

- A Charming Double Fronted Period House
- Sought After Westmoreland Triangle Location
- Two Reception Rooms / Large Kitchen With Dining Area
- First Floor Master Suite With Separate Dressing Room and En-Suite Bathroom
- Two Further Double Bedrooms And Family Bathroom
- Large Roof Terrace And Patio

Asking Price £2,250,000

Energy Efficiency Rating		Current	Potential
100-105	A		
81-100	B		
62-81	C		78
43-62	D	53	
25-43	E		
10-25	F		
1-10	G		

Not energy efficient - higher running costs

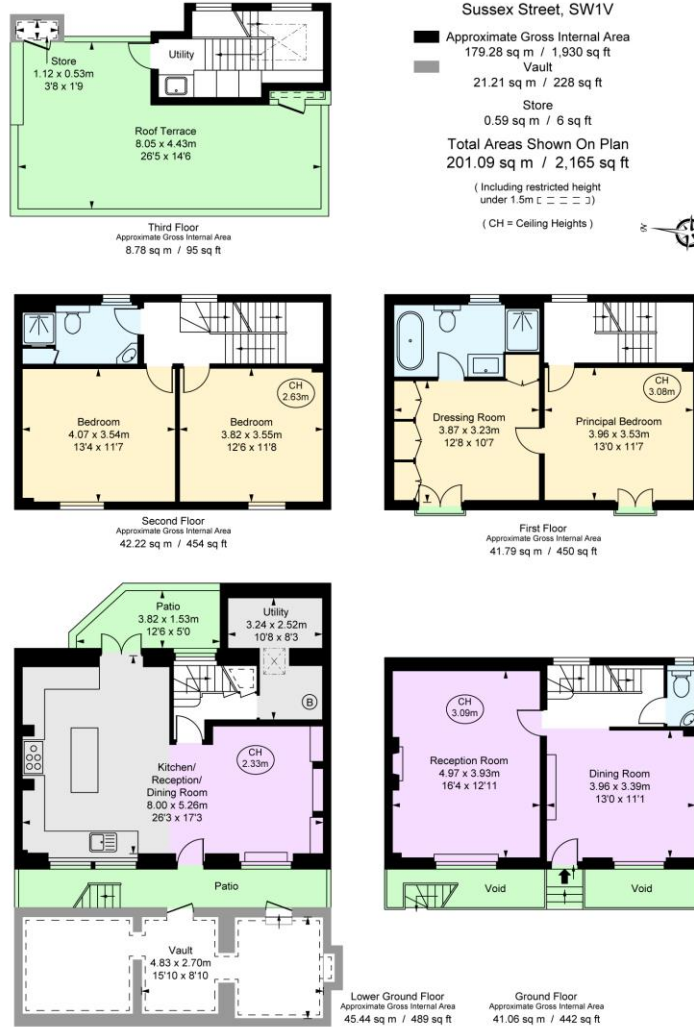
England, Scotland & Wales EU Directive 2002/91/EC

**Tenure:** Freehold

**Local Authority:** Westminster City  
**Council Tax Band:** H

*Chestertons Westminster & Pimlico Sales*

105 Wilton Road  
 London  
 SW1V 1DZ  
 westminster@chestertons.co.uk  
 020 3040 8201  
 chestertons.co.uk



This plan is not to scale. It is for guidance and not for valuation purposes.  
 All measurements and areas are approximate only, and have been prepared in accordance with the current edition of the RICS Code of Measuring Practice.  
 © Fulham Performance

Chesteron Global Ltd trading as Chestertons for themselves and for the vendor of this property whose agents they are, give notice that (i) these particulars do not constitute any part of an offer or contract, (ii) all statements contained within these particulars are made without responsibility on the part of Chestertons or the vendor, (iii) whilst made in good faith, none of the statements contained within these particulars are to be relied upon as a statement or representation of fact, (iv) any intending purchasers must satisfy themselves by inspection or otherwise as to the correctness of each of the statements contained within these particulars, (v) the vendor does not make or give either Chestertons or any person in their employment any authority to make or give representation or warranty whatsoever in relation to this property. Wide angle lenses may be used. ©Copyright Chestertons | Chesteron Global Ltd | Registered Office 40 Connaught Street, Hyde Park, London W2 2AB Registered Company Number 05334580.



This paper is 100% recyclable