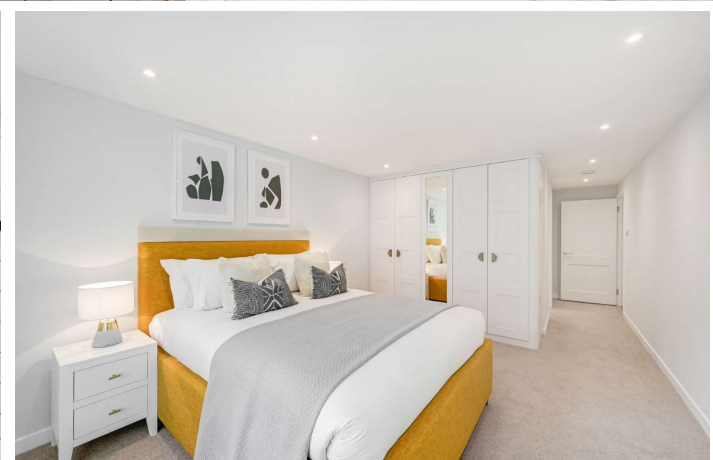




Rochester Row  
London, SW1P

CHESTERTONS







Located on the second floor of this portered purpose built block is this fabulous apartment which offers immaculate and well-proportioned living accommodation having recently undergone a complete refurbishment.

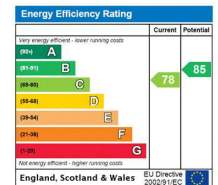
The reception room is sufficiently sized to incorporate a dining area and large seating area as well as a window seat offering views into Vincent Square, there is a bespoke modern kitchen with ample storage, two large double bedrooms (master with en-suite) and further separate family shower room.

Throughout the apartment is in fantastic condition and effortlessly stylish making this a perfect central London home.

Rochester Row is conveniently located for the shops, cafes and restaurants of Westminster and Pimlico. The nearest transport links can be found at Victoria (Victoria, Circle and District

- Immaculate Two Double Bedroom Apartment
- Large Reception Room with Dining Area
- Modern Fitted Kitchen
- Ample Storage Throughout
- Naturally Bright
- Porter, Lift and No Onward Chain

Offers in excess of £1,200,000



**Tenure:** Leasehold 165 Years from 25 March 1976

**Service Charge:** £9,099 (Approximately)

**Ground Rent:** £0

**Local Authority:** Westminster

**Council Tax Band:** G

*Chestertons Westminster & Pimlico Sales*

105 Wilton Road

London

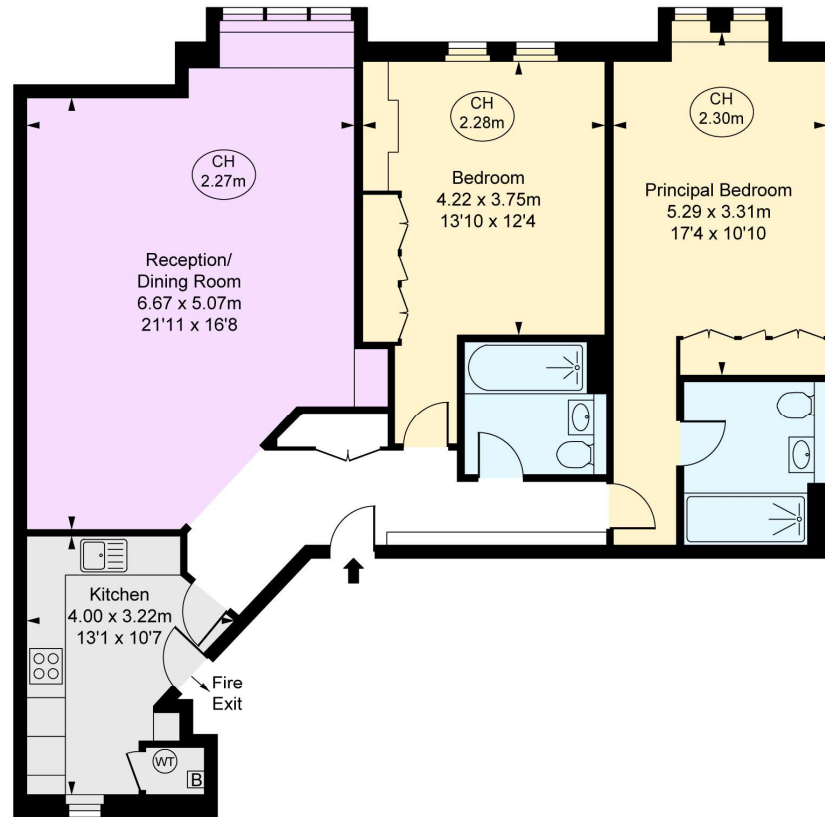
SW1V 1DZ

westminster@chestertons.co.uk

020 3040 8201

chestertons.co.uk

Rochester Row, SW1P  
Approximate Gross Internal Area  
104.55 sq m / 1,125 sq ft  
( CH = Ceiling Heights )



Second Floor

This plan is not to scale. It is for guidance and not for valuation purposes.  
All measurements and areas are approximate only, and have been prepared in accordance with the current edition of the RICS Code of Measuring Practice.  
© Fulham Performance

Chesterton Global Ltd trading as Chestertons for themselves and for the vendor of this property whose agents they are, give notice that (i) these particulars do not constitute any part of an offer or contract, (ii) all statements contained within these particulars are made without responsibility on the part of Chestertons or the vendor, (iii) whilst made in good faith, none of the statements contained within these particulars are to be relied upon as a statement or representation of fact, (iv) any intending purchasers must satisfy themselves by inspection or otherwise as to the correctness of each of the statements contained within these particulars, (v) the vendor does not make or give either Chestertons or any person in their employment any authority to make or give representation or warranty whatsoever in relation to this property. Wide angle lenses may be used. ©Copyright Chestertons | Chesterton Global Ltd | Registered Office 40 Connaught Street, Hyde Park, London W2 2AB Registered Company Number 05334580.



This paper is  
100% recyclable