



Morpeth Mansions
Morpeth Terrace, SW1P

CHESTERTONS





A stunning, very well presented third floor, four bedroom, two bathroom mansion flat with large double reception room and dining room overlooking Westminster Cathedral, a sizeable master bedroom, three further bedrooms and 2 recently refurbished bathrooms. This elegant, light and very spacious apartment benefits from lovely period features which include high ceilings and ornate cornicing and well-arranged storage space. The property further benefits from lift access, porter, share of freehold and is offered with no onward chain.

Morpeth Mansions, a sought after mansion block with a mahogany panelled entrance hall is in The Westminster Cathedral Conservation Area, conveniently situated for local amenities and the extensive transport facilities of Westminster (Jubilee, Circle and District lines) and Victoria (Victoria, Circle and District lines, Mainline station and Gatwick Express).

- Laterally Spacious Mansion Flat
- Sought After Block in the Heart of Westminster
- Four Bedrooms and 2 Bathrooms
- Spacious double Reception / Dining Room
- Separate Kitchen
- Third Floor with Lift Access

Asking Price £2,250,000

Tenure: Share of Freehold
Service Charge: £11000 – (This includes sinking fund contribution payable every 6 months)
Ground Rent: £0
Local Authority: Westminster
Council Tax Band: G

Chestertons Westminster & Pimlico Sales

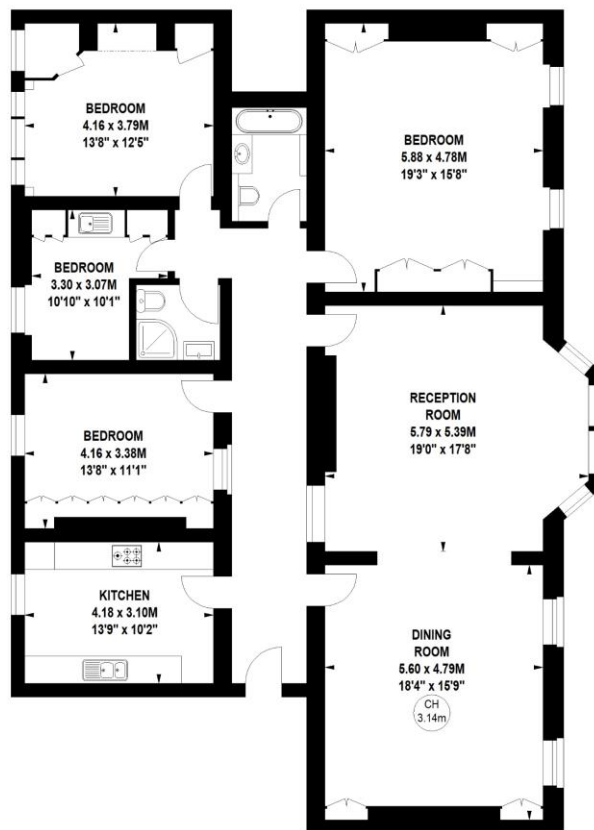
105 Wilton Road
London
SW1V 1DZ
westminster@chestertons.co.uk
020 3040 8201
chestertons.co.uk

Morpeth Mansions, SW1P

Approximate gross internal area

178.55 sq m / 1922 sq ft

Key:
CH - Ceiling Height



Third Floor

Not to scale, for guidance only and must not be relied upon as a statement of fact.
All measurements and areas are approximate only

Chesterton Global Ltd trading as Chestertons for themselves and for the vendor of this property whose agents they are, give notice that (i) these particulars do not constitute any part of an offer or contract, (ii) all statements contained within these particulars are made without responsibility on the part of Chestertons or the vendor, (iii) whilst made in good faith, none of the statements contained within these particulars are to be relied upon as a statement or representation of fact, (iv) any intending purchasers must satisfy themselves by inspection or otherwise as to the correctness of each of the statements contained within these particulars, (v) the vendor does not make or give either Chestertons or any person in their employment any authority to make or give representation or warranty whatsoever in relation to this property. Wide angle lenses may be used. ©Copyright Chestertons | Chesterton Global Ltd | Registered Office 40 Connaught Street, Hyde Park, London W2 2AB Registered Company Number 05334580.



This paper is
100% recyclable