



Evelyn Mansions
Carlisle Place, SW1P

CHESTERTONS





A grand and laterally spacious apartment situated within a sought after mansion block comprising three double bedrooms, three bathrooms (1 en-suite), two large reception rooms and kitchen with dining area. This beautifully presented property has retained numerous period features and benefits from high ceilings throughout, lift access, day-time porter and private balcony. It is offered to the market with no onward chain.

Evelyn Mansions is a sought after mansion block situated on Carlisle Place just off Victoria Street with Victoria station (Victoria, District and Circle lines, mainline station and Gatwick Express) only moments away. The property is in close proximity to some of London's most famous landmarks as well as a wide range of shops, bars, restaurants, theatres and the beautiful St. James's Park.

- A Grand and Laterally Spacious Apartment
- Sought After Mansions Block
- Three Double Bedrooms and Three Bathrooms
- Two Large Reception Rooms
- Kitchen with Dining Area
- Period Features

Asking Price £2,650,000

Tenure: Leasehold -189 years (less 3 days) from 24 June 1965
Service Charge: £8500 (Approximately)
Ground Rent: tbc
Local Authority: Westminster City Council
Council Tax Band: Band H

Chestertons Westminster & Pimlico Sales

105 Wilton Road
London
SW1V 1DZ

sales.westminster@chestertons.co.uk

020 3040 8201

chestertons.co.uk

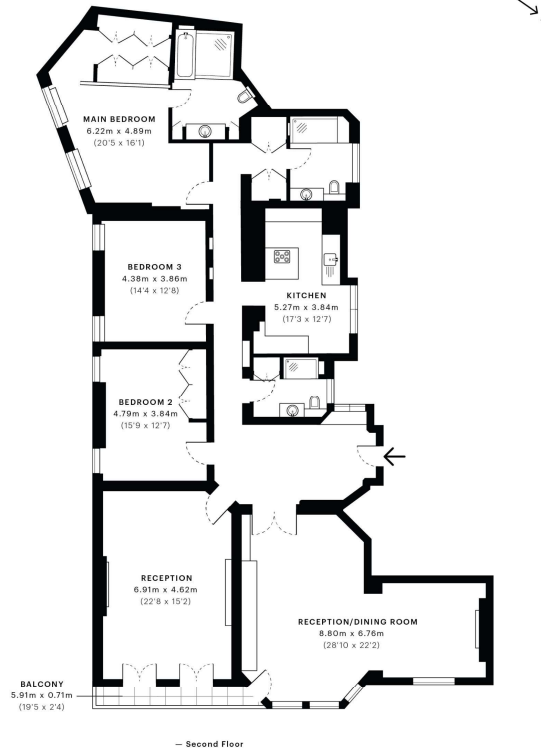


Carlisle Place, SW1P

CAPTURE DATE 13/05/2021 LABER SCAN POINTS 5,305,066

GROSS INTERNAL AREA

225.34 sqm / 2425.54 sqft



 GROSS INTERNAL AREA (GIA)
The footprint of the property
225.34 sqm / 2425.54 sqft

 NET INTERNAL AREA (NIA)
Excludes walls and external features
Includes washrooms, restricted head height
201.81 sqm / 2172.26 sqft

 EXTERNAL STRUCTURAL FEATURES
Balconies, terraces, verandas etc.
3.95 sqm / 42.52 sqft

 RESTRICTED HEAD HEIGHT
Limited use area under 1.9m
0.00 sqm / 0.00 sqft



Spec Verified floor plans are produced in accordance with Royal Institution of Chartered Surveyors' Property Measurement Standards. Plots and gardens are illustrative only and excluded from all area calculations. Due to rounding, numbers may not add up precisely. All measurements shown for the individual room lengths and widths are the maximum points of measurements captured in the scan.

IPMS 1B RESIDENTIAL 229.27 sqm / 2467.84 sqft
IPMS 3C RESIDENTIAL 207.50 sqm / 2233.51 sqft

spec id: 609ab7bb8678500e40e96d18

Chesterton Global Ltd trading as Chestertons for themselves and for the vendor of this property whose agents they are, give notice that (i) these particulars do not constitute any part of an offer or contract, (ii) all statements contained within these particulars are made without responsibility on the part of Chestertons or the vendor, (iii) whilst made in good faith, none of the statements contained within these particulars are to be relied upon as a statement or representation of fact, (iv) any intending purchasers must satisfy themselves by inspection or otherwise as to the correctness of each of the statements contained within these particulars, (v) the vendor does not make or give either Chestertons or any person in their employment any authority to make or give representation or warranty whatsoever in relation to this property. Wide angle lenses may be used. ©Copyright Chestertons | Chesterton Global Ltd | Registered Office 40 Connaught Street, Hyde Park, London W2 2AB Registered Company Number 05334580.



This paper is
100% recyclable