



Rosebery Court
15 Charles Street, W1J

CHESTERTONS





This luxurious 892 sq ft ground-floor apartment is situated in the heart of Mayfair on Charles Street, offering refined living in one of London's most prestigious locations. Finished to an exceptional standard throughout, the property boasts a sophisticated aesthetic with marble kitchen countertops and top-of-the-line Gaggenau appliances. The spacious reception room provides direct access to a south-facing communal terrace, flooding the space with natural light. The apartment features two elegantly designed bathrooms, including a sumptuous ensuite, enhancing the sense of comfort and exclusivity. Further benefits include a private underground parking space and the convenience of a dedicated porter, ensuring both security and seamless living in this prime central Mayfair address.

- 892 sq ft apartment
- Ground floor
- South-facing terrace access
- Two bedrooms, two bathrooms
- Luxury Gaggenau kitchen
- Marble countertops
- Private underground parking
- Porter service included

Asking Price £1,950,000

Energy Efficiency Rating		
Less energy efficient - lower running costs	Current	Potential
95+ A		
81-94 B		
69-80 C	75	79
55-68 D		
39-54 E		
21-38 F		
1-20 G		
Not energy efficient - higher running costs		
England, Scotland & Wales EU Directive 2002/91/EC		

Tenure: Share of Freehold and Leasehold 974 Year Lease (29/09/2999)

Service Charge: Approximately £10,000 per annum

Ground Rent: None

Local Authority: City of Westminster

Council Tax Band: G

Chestertons Mayfair Sales

47 South Audley Street

London

W1K 2QA

mayfair@chestertons.co.uk

020 7629 4513

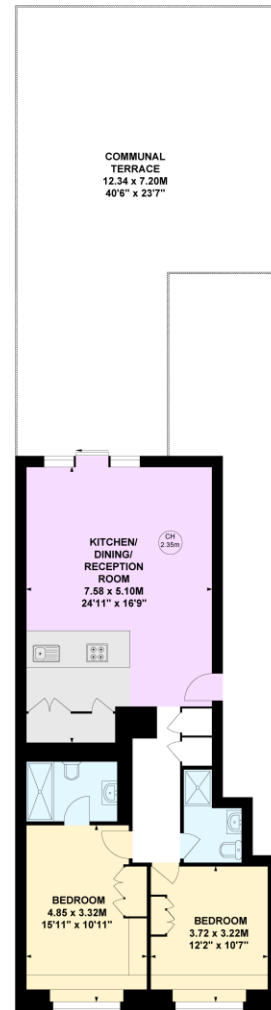
chestertons.co.uk

Rosebery Court, W1J

Approximate gross internal area

82.9 sq m / 892 sq ft

Key :
CH - Ceiling Height



Ground Floor

Not to scale, for guidance only and must not be relied upon as a statement of fact.

All measurements and areas are approximate only

Chesterton UK Services Limited trading as Chestertons for themselves and for the vendor of this property whose agents they are, give notice that (i) these particulars do not constitute any part of an offer or contract, (ii) all statements contained within these particulars are made without responsibility on the part of Chestertons or the vendor, (iii) whilst made in good faith, none of the statements contained within these particulars are to be relied upon as a statement or representation of fact, (iv) any intending purchasers must satisfy themselves by inspection or otherwise as to the correctness of each of the statements contained within these particulars, (v) the vendor does not make or give either Chestertons or any person in their employment any authority to make or give representation or warranty whatsoever in relation to this property. Wide angle lenses may be used. ©Copyright Chestertons | Chesterton UK Services Limited | Registered Office 40 Connaught Street, Hyde Park, London W2 2AB Registered Company Number 05334580.



This paper is
100% recyclable