



Bank Chambers
25 Jermyn Street, SW1Y

CHESTERTONS



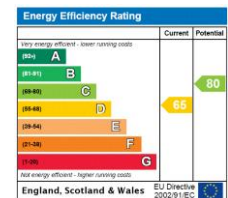


A well proportioned one bedroom apartment situated in an impressive period building, with lift and porter, in the heart of St James's. The apartment comprises a welcoming reception room with open plan kitchen, a spacious double bedroom with separate bathroom.

Jermyn Street is well known for its art galleries and gentleman's outfitters. St James's is home to many of London's most prestigious establishments and long established private members clubs including the East India Club on St James' Square and the RAC Club on Pall Mall. The open spaces of Green Park and St James's Park are nearby.

- Spacious
- Period Building
- Porter & Lift
- Prime St. James's location
- Long Lease

Offers in excess of
£700,000



Tenure: Leasehold 151 years 7 months
Service Charge: £4000
Ground Rent: £0
Local Authority: City of Westminster
Council Tax Band: F

Chestertons Mayfair Sales

47 South Audley Street
 London
 W1K 2QA

mayfair@chestertons.co.uk

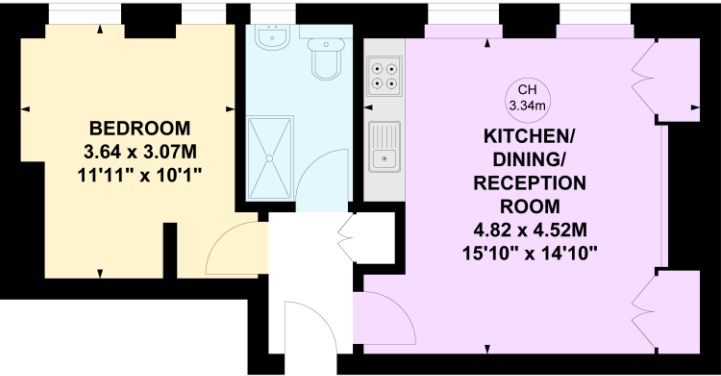
020 7629 4513

chestertons.co.uk

Bank Chambers, SW1Y

Approximate gross internal area
40.91 sq m / 440 sq ft

Key :
CH - Ceiling Height



First Floor

Not to scale, for guidance only and must not be relied upon as a statement of fact.
All measurements and areas are approximate only

Chesterton UK Services Limited trading as Chestertons for themselves and for the vendor of this property whose agents they are, give notice that (i) these particulars do not constitute any part of an offer or contract, (ii) all statements contained within these particulars are made without responsibility on the part of Chestertons or the vendor, (iii) whilst made in good faith, none of the statements contained within these particulars are to be relied upon as a statement or representation of fact, (iv) any intending purchasers must satisfy themselves by inspection or otherwise as to the correctness of each of the statements contained within these particulars, (v) the vendor does not make or give either Chestertons or any person in their employment any authority to make or give representation or warranty whatsoever in relation to this property. Wide angle lenses may be used. ©Copyright Chestertons | Chesterton UK Services Limited | Registered Office 40 Connaught Street, Hyde Park, London W2 2AB Registered Company Number 05334580.

