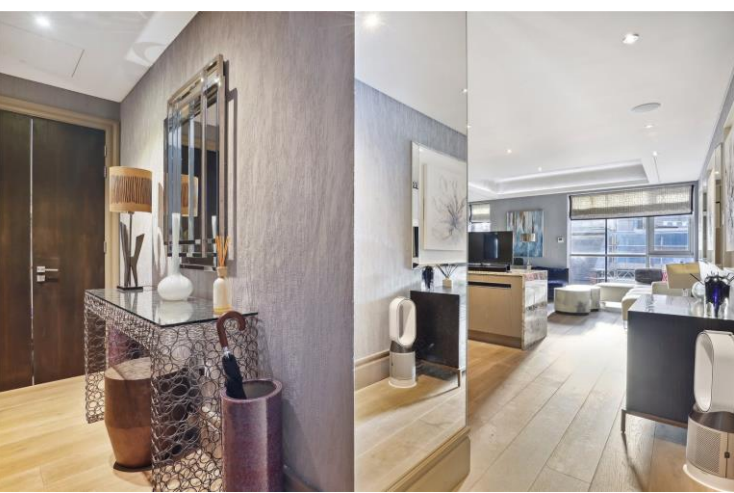




Verge Apartments
24 Dering Street, W1S

CHESTERTONS





A modern studio loft apartment for sale in Mayfair fully interior designed by Lambart & Browne with Crestron, air cooling, bespoke cabinetry, dedicated secure private entrance, lift access and close to Bond Street Underground and the Elizabeth Line.

Verge Mayfair, W1 by developer Oakmayne, is a scheme of ten exclusive luxury apartments. Verge Mayfair overlooks Oxford Street and Dering Street. Verge has been interior designed by Lambert & Browne who have sought to create a unique and stylish development with opulent interiors and spacious apartments. Stylish bathrooms and kitchens are complimented by bespoke joinery, coffered ceilings and concealed feature lighting.

Specification includes comfort cooling, Crestron controls which can be programmed for lighting and audio/visual equipment, Lutron lighting and secondary glazing. Mayfair is one of London's most prestigious and sought-after areas defined by its historic buildings, elegant squares and gardens, whilst also offering some of the best shopping and restaurants. Crossrail services from Bond Street provide excellent transport links via the new Elizabeth Line.

- Interior Designed apartment
- Open-Plan
- Crestron lighting
- Fully integrated modern kitchen
- Lift
- Concierge

Asking Price £1,400,000

Energy Efficiency Rating		
Energy efficient - lower running costs	Current	Potential
92-100 A		
81-91 B	85	86
69-80 C		
55-68 D		
49-54 E		
35-48 F		
21-34 G		
Not energy efficient - higher running costs		
England, Scotland & Wales EU Directive 2002/91/EC		

Tenure: Leasehold 113 years
Service Charge: £10,400
Ground Rent: £375
Local Authority: City Of Westminster
Council Tax Band: F

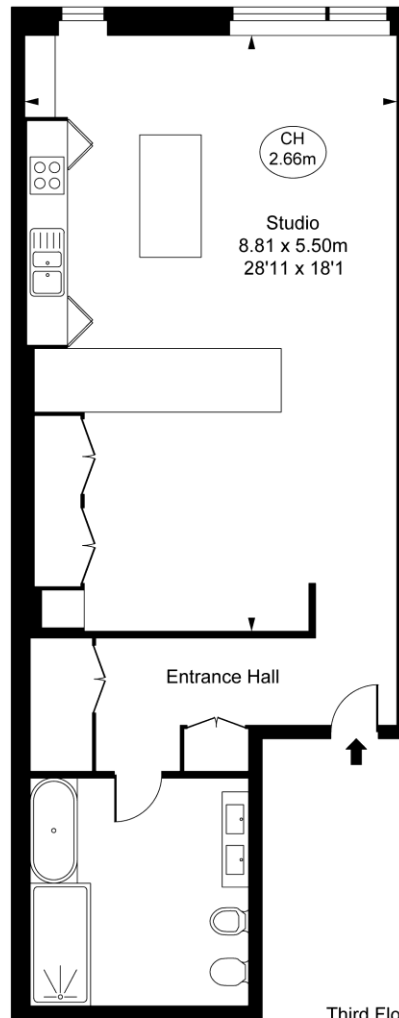
Chestertons Mayfair Sales

47 South Audley Street
 London
 W1K 2QA

mayfair@chestertons.co.uk

020 7629 4513

chestertons.co.uk



Verge Apartments,
Dering Street, W1S
Approximate Gross Internal Area
69.63 sq m / 750 sq ft
(CH = Ceiling Heights)



Third Floor

This plan is not to scale. It is for guidance and not for valuation purposes.
All measurements and areas are approximate only, and have been prepared in accordance with the current edition of the RICS Code of Measuring Practice.
© Fulham Performance

Chesterton Global Ltd trading as Chestertons for themselves and for the vendor of this property whose agents they are, give notice that (i) these particulars do not constitute any part of an offer or contract, (ii) all statements contained within these particulars are made without responsibility on the part of Chestertons or the vendor, (iii) whilst made in good faith, none of the statements contained within these particulars are to be relied upon as a statement or representation of fact, (iv) any intending purchasers must satisfy themselves by inspection or otherwise as to the correctness of each of the statements contained within these particulars, (v) the vendor does not make or give either Chestertons or any person in their employment any authority to make or give representation or warranty whatsoever in relation to this property. Wide angle lenses may be used. ©Copyright Chestertons | Chesterton Global Ltd | Registered Office 40 Connaught Street, Hyde Park, London W2 2AB Registered Company Number 05334580.



This paper is
100% recyclable