



Park Mount Lodge

Reeves Mews, Mayfair W1K

Guide Price £2,360,000

Situated on the first floor of a secure residential building in the heart of Mayfair Village, this bright lateral apartment offers a double reception room and a large terrace. Comprising two double bedrooms two bathrooms and separate kitchen.



Park Mount Lodge

Reeves Mews, Mayfair W1K

- Double reception room
- Two bedrooms
- Two bathrooms
- Balcony
- Roof terrace
- Lift
- Porter



A superb two bedroom lateral apartment with the rarity of a large south facing terrace, porter and lift.

Located on the first floor of a secure residential building in the heart of Mayfair, this well-proportioned two bedroom two bathroom apartment offers bright and spacious accommodation with the added benefit of a large terrace.

The property comprises an open plan reception room of excellent proportions, which opens out onto a balcony overlooking the mews. There is also a separate kitchen and principal bedroom suite providing direct access onto a generous terrace measuring 580 sq. ft. The property further boasts a second double bedroom, separate shower room and generous storage in the entrance hallway.

Reeves Mews is perfectly situated for the world class amenities, restaurants and boutique shops of Mayfair, and just a moments walk from Grosvenor Square and the green open spaces of Hyde Park.

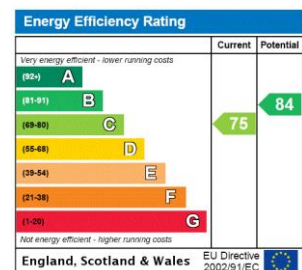
Tenure: Leasehold expiring 15/12/2060 (approx.. 37 years 6 months remaining)

Service Charge: £15,060 p.a.

Ground Rent: £300 p.a. (approximately)

Local Authority: City Of Westminster

Council Tax Band: G



Chestertons Mayfair Sales

47 South Audley Street

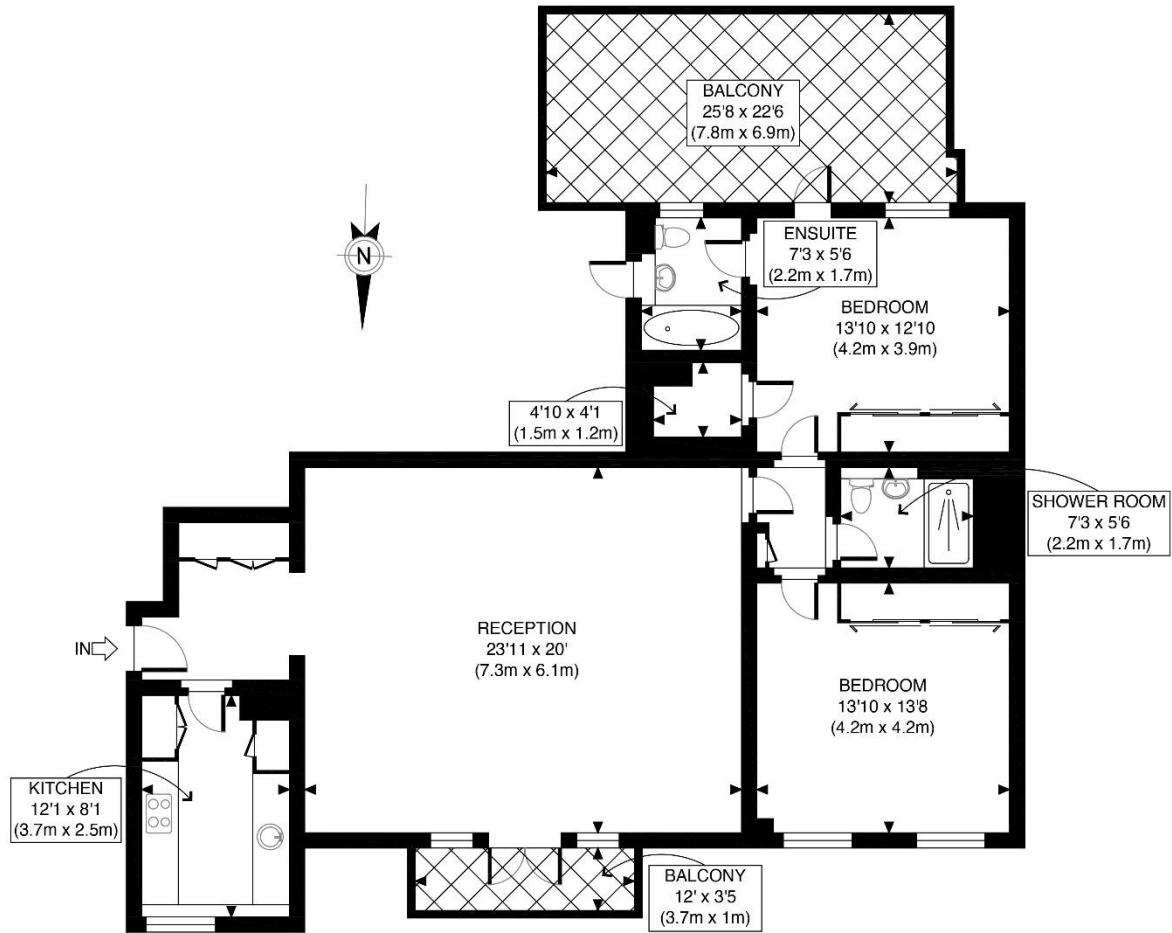
London

W1K 2QA


sales.mayfair@chestertons.co.uk

020 7629 4513

chestertons.co.uk



FIRST FLOOR
GROSS INTERNAL
FLOOR AREA 1225 SQ FT

APPROX. GROSS INTERNAL FLOOR AREA 1225 SQ FT / 114 SQM	Park Mount Lodge
Disclaimer: Floor plan measurements are approximate and are for illustrative purposes only. While we do not doubt the floor plan accuracy and completeness, you or your advisors should conduct a careful, independent investigation of the property in respect of monetary valuation	date 20/04/23 photoplan 

Chesterton Global Ltd trading as Chestertons for themselves and for the vendor of this property whose agents they are, give notice that (i) these particulars do not constitute any part of an offer or contract, (ii) all statements contained within these particulars are made without responsibility on the part of Chestertons or the vendor, (iii) whilst made in good faith, none of the statements contained within these particulars are to be relied upon as a statement or representation of fact, (iv) any intending purchasers must satisfy themselves by inspection or otherwise as to the correctness of each of the statements contained within these particulars, (v) the vendor does not make or give either Chestertons or any person in their employment any authority to make or give representation or warranty whatsoever in relation to this property. Wide angle lenses may be used. ©Copyright Chestertons | Chesterton Global Ltd | Registered Office 40 Connaught Street, Hyde Park, London W2 2AB Registered Company Number 05334580.

