



Warrington Crescent

London, W9

Asking Price £1,100,000

Situated in a prominent position in the heart of Little Venice, a truly exceptional two double bedroom flat on the second floor of a stucco fronted period conversion.

This stunning, and naturally bright, apartment is presented in immaculate condition and oozes both elegance and sophistication, having undergone a complete refurbishment to exacting standards, the finish cannot be faulted.

Amongst its many highlights is a 20ft reception with bespoke shelving and wooden floors, a stylish eat in kitchen with views over the communal garden to the rear, a sumptuous master bedroom and a large communal roof terrace.

Warrington Crescent is superbly located to take advantage of the local amenities, which include Warwick Avenue (Bakerloo line) and the local shops/cafes of both Formosa Street and Clifton Road.



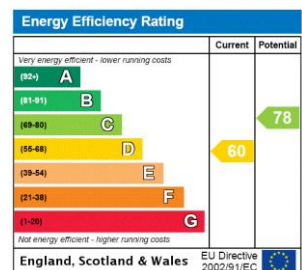
Warrington Crescent

London, W9

- A stunning two bedroom apartment positioned on the second floor of a stucco fronted building.
- The apartment overlooks and has access to the spectacular Crescent Amenity Garden.
- Finished to a high specification throughout.
- Benefitting from a share in the freehold.



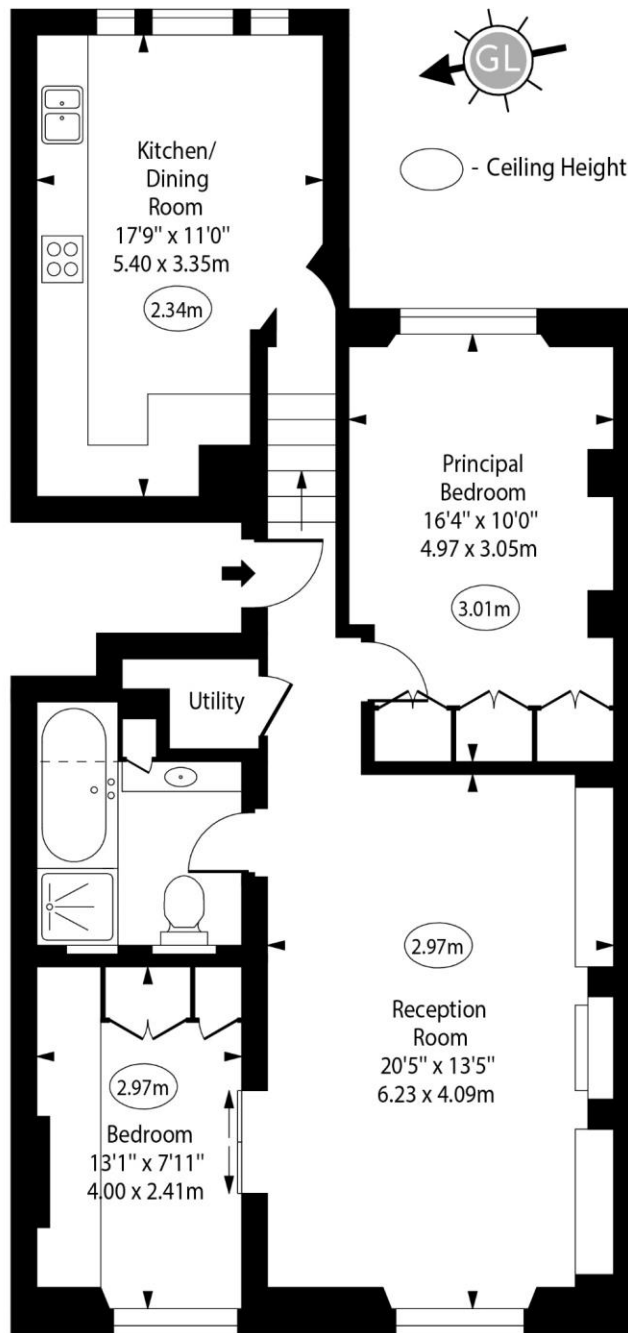
Tenure: Share of Freehold 82 years 2 months
Service Charge: £3,190.52 pa
Ground Rent: Peppercorn
Local Authority: City Of Westminster
Council Tax Band: F



Chestertons Little Venice Sales

26 Clifton Road
Maida Vale
London
W9 1SX
littlevenice@chestertons.co.uk
020 7286 4632
chestertons.co.uk

Warrington Crescent, W9



Second Floor

Approx Gross Internal Area 884 Sq Ft - 82.12 Sq M

For Illustration Purposes Only - Not To Scale

www.goldlens.co.uk

Ref. No. 022287R

