



St Marys Mansions

St Mary Terrace, W2

Asking Price £1,000,000

This charming three double bedroom apartment is situated on the 4th floor within this stunning red brick mansion building. The property comprises; reception room, separate kitchen, three bedrooms and family bathroom.

Spanning approximately 1174 square feet, this stunning apartment further benefits; balcony, wooden flooring and spacious accommodation throughout.

St Marys Terrace is ideally situated moments from Warwick Avenue Underground station and the canal close to local amenities.

CHESTERTONS



St Marys Mansions

St Mary Terrace, W2

- Elegant Mansion Block.
- Three Bedrooms.
- Spanning approximately 1174 square feet.
- Benefitting from a long lease.

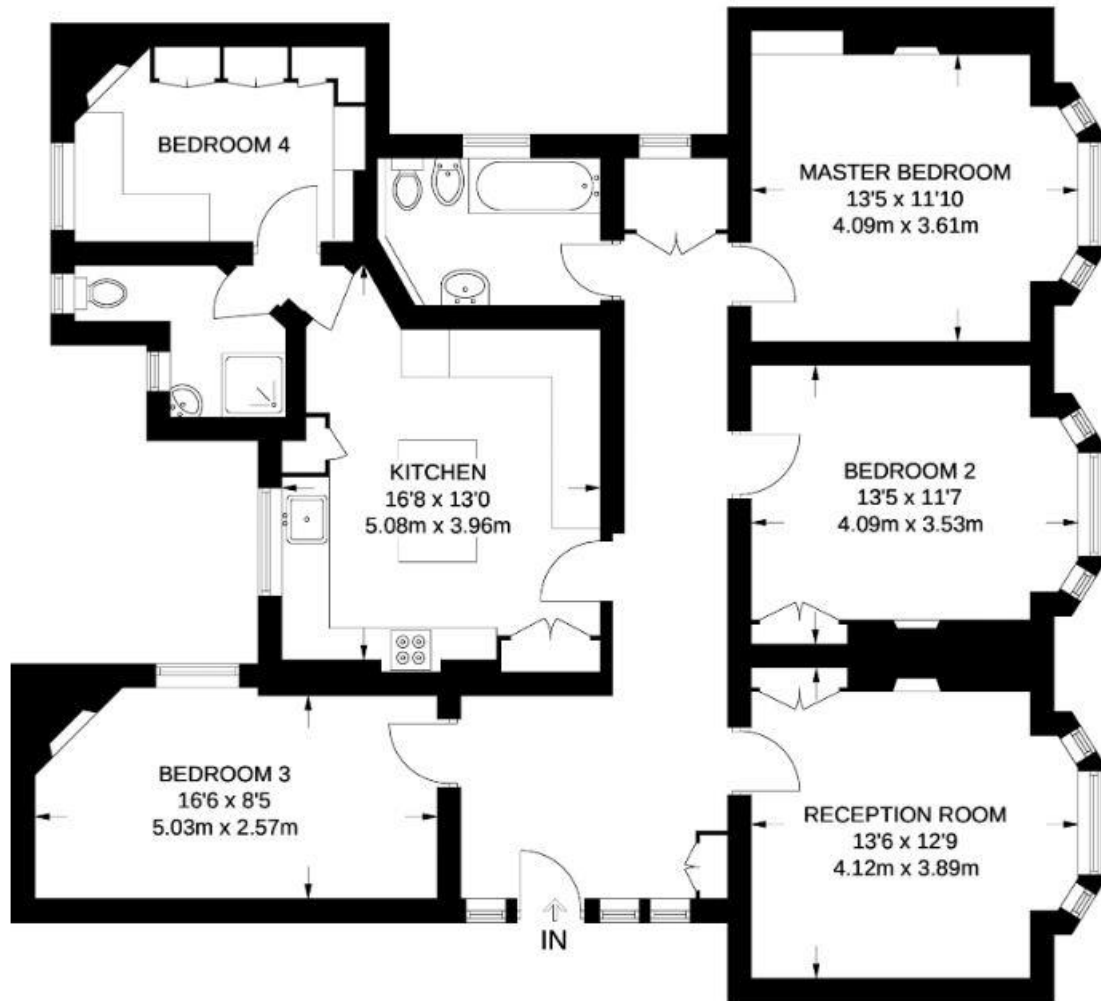


Tenure: Leasehold 127 years 7 months
Service Charge: £6,227.96 pa
Ground Rent: £0
Local Authority: City of Westminster
Council Tax Band: G

Energy Efficiency Rating		
	Current	Potential
Very energy efficient - lower running costs		
(94-100) A		
(81-93) B		
(69-80) C		75
(55-68) D		
(39-54) E	42	
(21-38) F		
(1-20) G		
Not energy efficient - higher running costs		
England, Scotland & Wales		EU Directive 2002/91/EC

Chestertons Little Venice Sales

26 Clifton Road
Maida Vale
London
W9 1SX
littlevenice@chestertons.co.uk
020 7286 4632
chestertons.co.uk



FOURTH FLOOR

**APPROXIMATE GROSS INTERNAL AREA
1174 SQ FT / 109.1 SQ M**

