



Lauderdale Mansions

Lauderdale Road, W9

Asking Price £1,100,000

A beautiful 3 bedroom apartment in the heart of Little Venice positioned on a peaceful treelined street. The property has retained many of the original features that a mansion block boasts adding to the further charm of the property.

Spanning at over 1000 sqft this lateral apartment benefits from an abundance of natural light throughout, three large double bedrooms, one of which is en-suite, a large living room with a fire place and with direct access to a balcony with a lovely outlook.

Lauderdale Mansions are ideally situated just 150 metres from the local shops and cafés of Lauderdale Parade, and only 0.3 miles from Maida Vale Underground station (Bakerloo line), offering excellent transport links.

v

CHESTERTONS



Lauderdale Mansions

Lauderdale Road, W9

- Abundance of natural light
- Balcony
- Mansion block
- Chain free
- Over 1000sqft



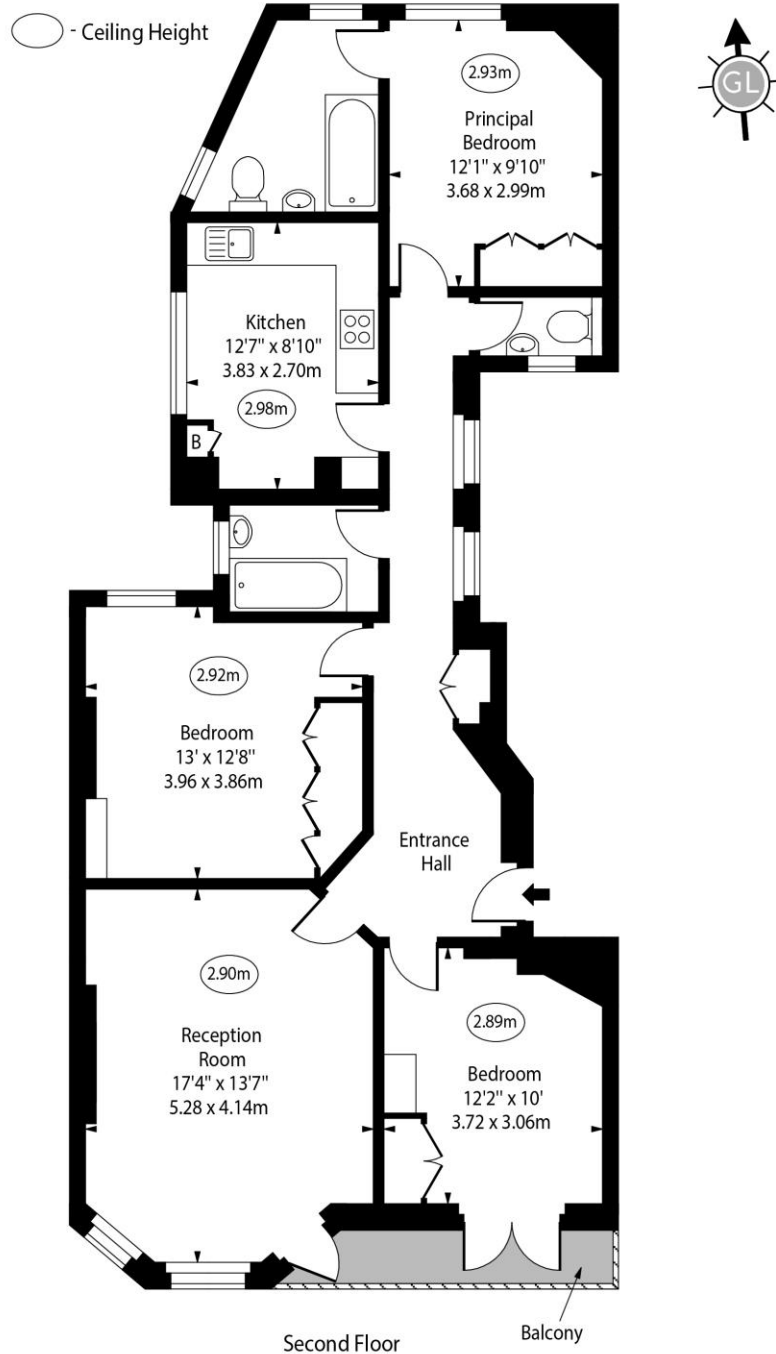
Tenure: Leasehold 951 years 2 months
Service Charge: £7,562.52 pa
Ground Rent: £0
Local Authority: City of Westminster
Council Tax Band: F

Score	Energy rating	Current	Potential
92+	A		
81-91	B		
69-80	C		
55-68	D	71 C	91 B
39-54	E		
21-38	F		
1-20	G		

Chestertons Little Venice Sales

26 Clifton Road
Maida Vale
London
W9 1SX
littlevenice@chestertons.co.uk
020 7286 4632
chestertons.co.uk

Lauderdale Mansions,
Lauderdale Road, W9



Approx Gross Internal Area 1020 Sq Ft - 94.76 Sq M

Every attempt has been made to ensure the accuracy of the floor plan shown. However, all measurements, fixtures, fittings, and data shown are approximate interpretations and for illustrative purposes only. Measured according to the RICS. Not To Scale.

www.goldlens.co.uk

Ref. No. 028728J

