



Chudleigh Road

London, NW6

Offers in excess of
£3,500,000

A Stunning Six-Bedroom Detached Home in the Heart of Brondesbury, Set in one of Brondesbury's most sought-after locations, this beautiful detached residence spans over 4,000 sqft including a garage and out building offering the perfect blend of practicality while being an inviting home.

Upon entering you are met with a large hallway set to the left is a grand formal living room benefitting from an abundance of natural light from an expansive bay window. The heart of the home is a spacious, contemporary eat-in kitchen, complemented by a large dining room, ideal for entertaining which further benefits from seamless bi-folding doors that open directly onto a beautifully landscaped 97-foot garden.

The first floor offers four generously proportioned double bedrooms, two of which benefit from en suite bathrooms, while a luxurious family bathroom serves the remaining rooms. One of the bedrooms has been thoughtfully converted into a walk-in wardrobe adding further grandeur to the master suite. The second floor hosts two further spacious bedrooms and a three piece suite bathroom with ample eaves storage, offering flexibility and privacy.

The home combines practicality with modern comforts making it the perfect family home.

CHESTERTONS

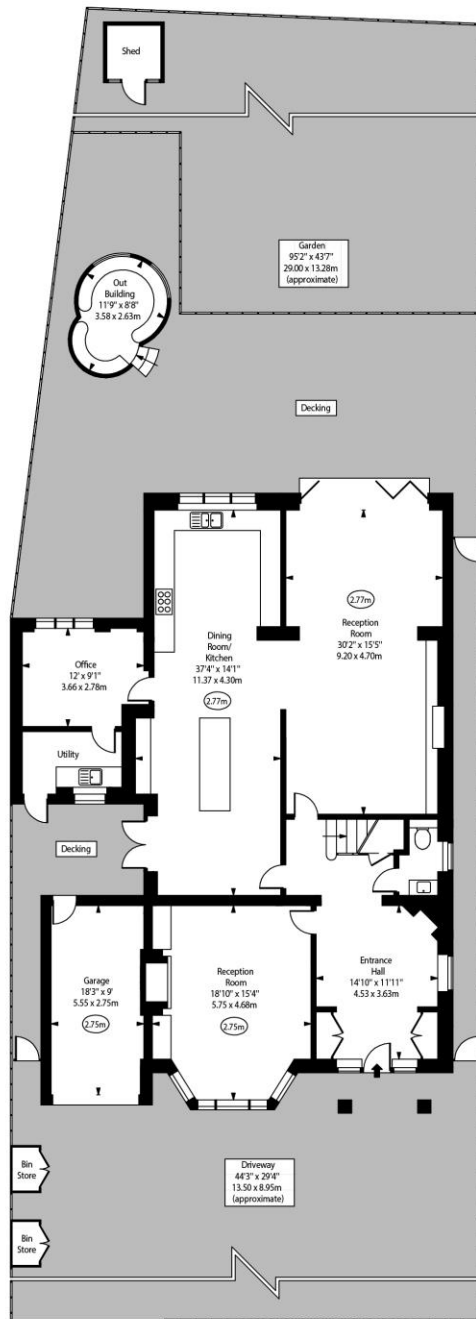


Chudleigh Road

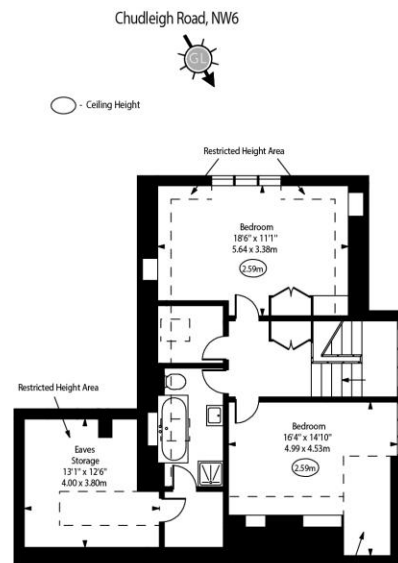
London, NW6

- 97 foot garden
- bi folding doors
- over 4000 sqft
- 6 bedrooms
- detached
- 18ft garage
- gated off street parking for 3-4 cars

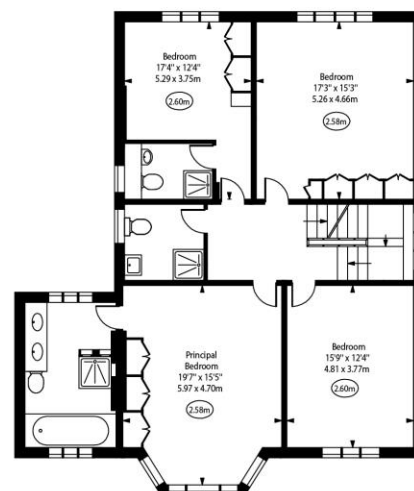
26 Clifton Road
Maida Vale
London
W9 1SX
littlevenice@chestertons.co.uk
020 7286 4632
chestertons.co.uk



Ground Floor



Second Floor



First Floor

Approx Gross Internal Area 3685 Sq Ft - 342.34 Sq M
(Excluding Restricted Height, Eaves Storage, Garage & Out Building)
Approx. Floor Area Including Restricted Heights 4195 Sq Ft - 389.72 Sq M
(Including Eaves Storage, Garage & Out Building)
Restricted Height Area 270 Sq Ft - 25.08 Sq M
Garage Area 160 Sq Ft - 14.86 Sq M
Out Building Area 80 Sq Ft - 7.43 Sq M

For Illustration Purposes Only - Not To Scale
www.goldlens.co.uk
Ref. No. 027503R

