



# Clarendon Gardens

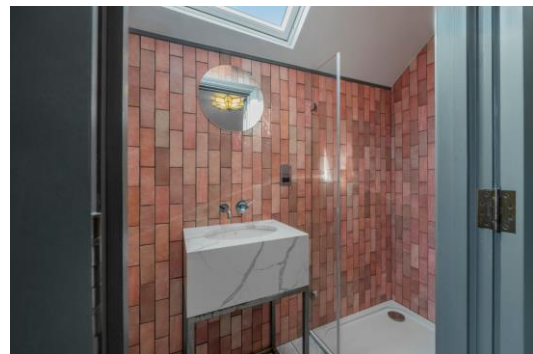
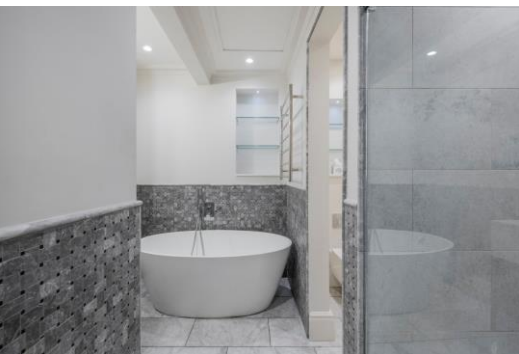
Little Venice, W9

Asking Price £1,300,000

Positioned on the wonderful Clarendon Gardens and set up the upper floors of a stucco fronted regency style building, is this spectacularly finished and extremely well presented three double bedroom apartment.

This generously proportioned apartment boasts high ceilings and plenty of period features throughout. The accommodation comprises of a large reception room with abundant natural light throughout, a stunning bespoke eat in kitchen, two large double bedrooms both served by a spacious family bathroom and a further double bedroom on the top floor benefitting from its own en-suite bathroom.

Clarendon gardens is a quiet street located in the heart of Little Venice and is very well place to take advantage of the local amenities. These include the shops/cafes of Clifton Road and Warwick Avenue underground (Bakerloo).



# Clarendon Gardens

## Little Venice, W9

- Beautiful Stucco Fronted Period Apartment.
- Plentiful original features.
- Benefitting from a share in the freehold.
- Positioned in central Little Venice.



---

**Tenure:** Share of Freehold 81 years 3 months  
**Service Charge:** £8,730.44 pa  
**Ground Rent:** Peppercorn  
**Local Authority:** City of Westminster  
**Council Tax Band:** G

---

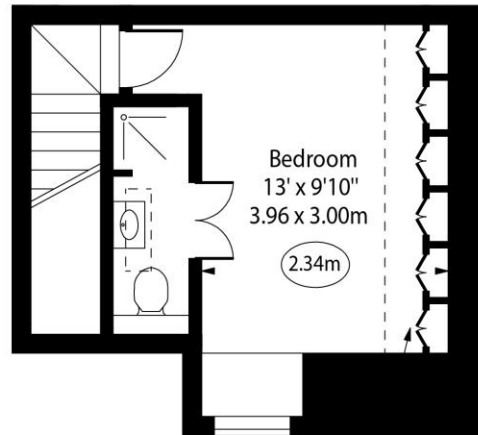
***Chestertons Little Venice Sales***

26 Clifton Road  
Maida Vale  
London  
W9 1SX  
littlevenice@chestertons.co.uk  
020 7286 4632  
chestertons.co.uk

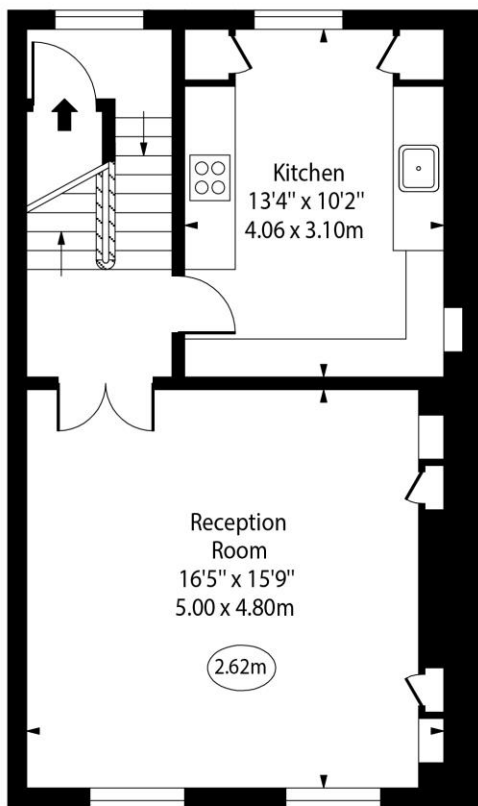
Clarendon Gardens,  
Little Venice, W9



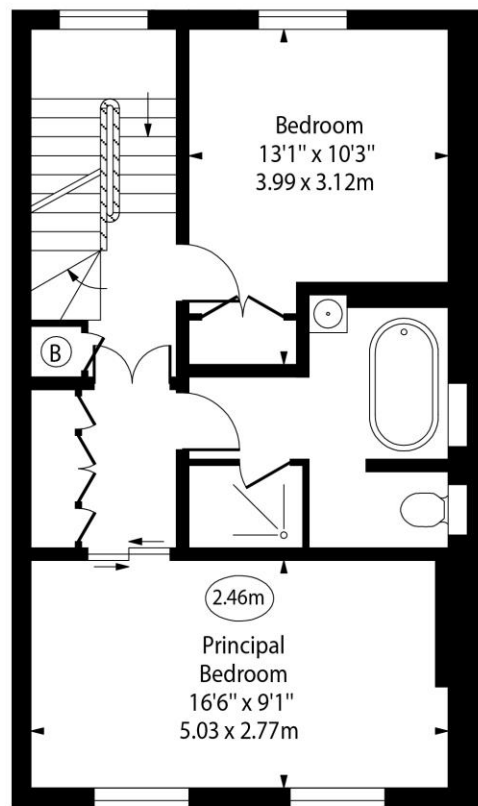
○ - Ceiling Height



Restricted Height Area  
Fourth Floor



Second Floor



Third Floor

Approx Gross Internal Area

1170 Sq Ft - 108.69 Sq M

Approx. Floor Area Including Restricted Heights

1203 Sq Ft - 111.76 Sq M

For Illustration Purposes Only - Not To Scale

[www.goldlens.co.uk](http://www.goldlens.co.uk)

Ref. No. 027037E

