



Randolph Crescent

London, W9

Asking Price £2,300,000

Set on highly desirable Randolph Crescent and positioned on the first floor with a lift, is this beautifully designed and wonderfully finished larger than average three bedroom apartment. Spanning approximately 1380 square feet, and with views over and access to the magnificent communal gardens, hidden away to the rear of the property.

With spectacularly high ceilings throughout and abundant natural light from all sides, the accommodation comprises a fabulous double reception room, a modernised and spacious kitchen / breakfast room, a master bedroom with plentiful storage and en-suite shower room with airing cupboard, and two further double bedrooms, both served by the family bathroom, with shower and bathtub. All the bedrooms overlook the gardens.

Randolph Crescent is superbly located for all the amenities Little Venice has to offer, including Warwick Avenue Tube (Bakerloo Line) and the shops & cafes of Clifton Road.



Randolph Crescent

London, W9

- A stunning and larger than average first floor 3 bedroom apartment.
- Positioned on Randolph Crescent and benefitting from a lift.
- The apartment, finished to a high specification, has views over and access to the ever popular Crescent gardens.
- Benefitting from a share in the freehold and exceptionally long underlying lease.



Tenure: Share of Freehold 990 years 11 months

Service Charge: £7,156.88 pa

Ground Rent: Peppercorn

Local Authority: City of Westminster

Council Tax Band: G

Chestertons Little Venice Sales

26 Clifton Road

Maida Vale

London

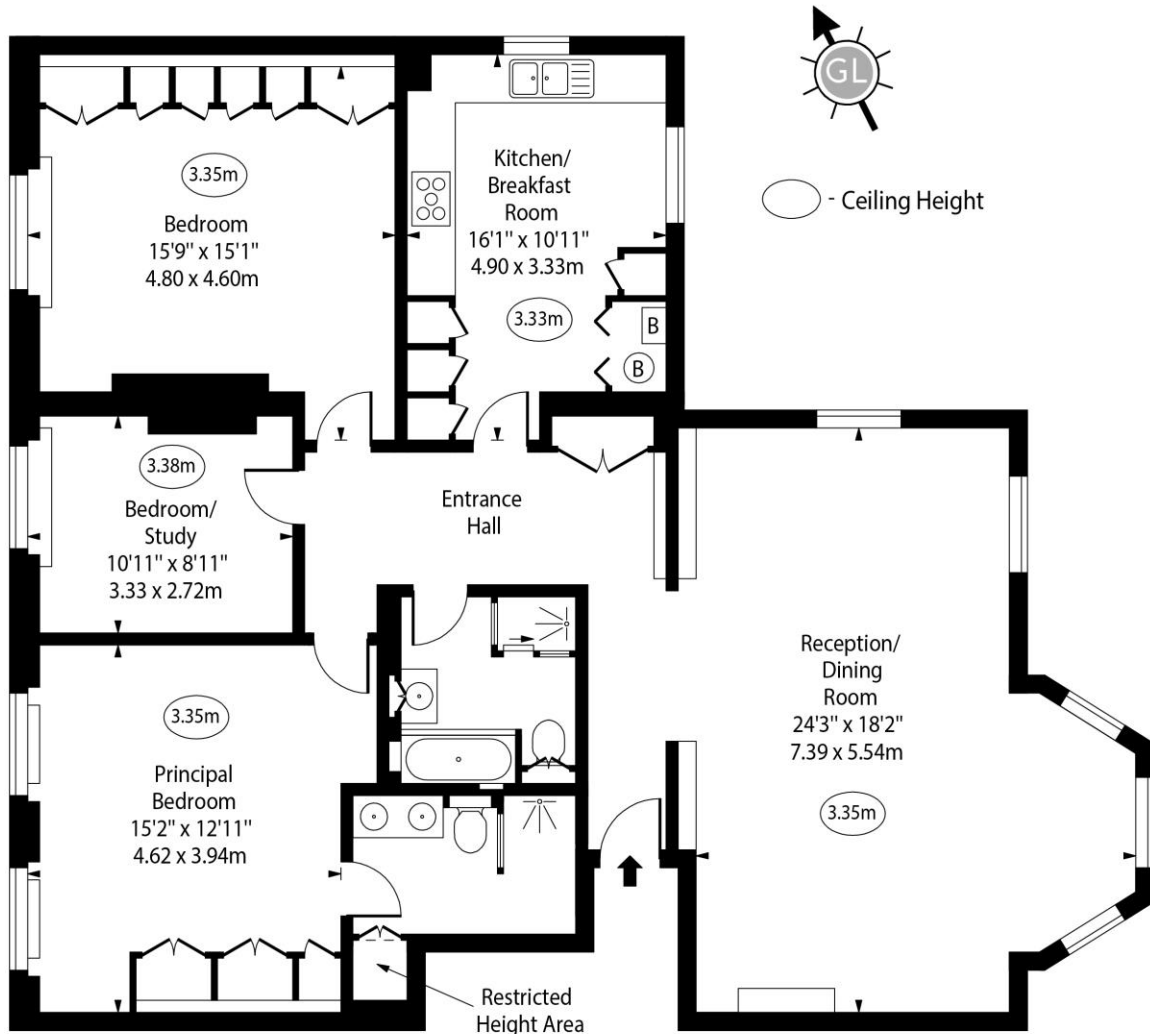
W9 1SX

littlevenice@chestertons.co.uk

020 7286 4632

[chestertons.co.uk](https://www.chestertons.co.uk)

Randolph Crescent, W9



First Floor

Approx Gross Internal Area 1372 Sq Ft - 127.46 Sq M

Approx. Floor Area Including Restricted Heights 1378 Sq Ft - 128.02 Sq M

For Illustration Purposes Only - Not To Scale
www.goldlens.co.uk
Ref. No. 026506M

