



Shirland Road

London, W9

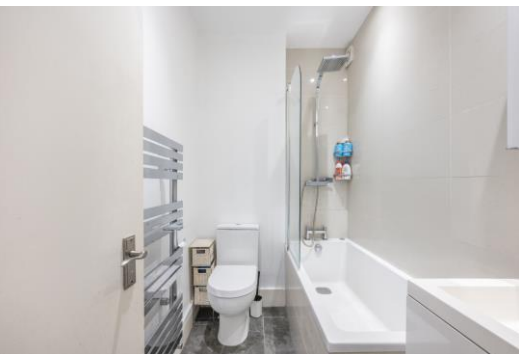
Asking Price £500,000

A charming two bedroom apartment positioned on the second floor and spanning approx. 595 square feet.

Finished to a high specification the accommodation comprises a large and bright open reception, two double bedrooms and family bathroom.

Shirland Road is fantastically located in central Maida Vale, being less than half a mile to Maida Vale Underground (Bakerloo Line) and the shops, cafes and restaurants of both Little Venice and Maida Vale and Queen's Park. It is also just over one mile to the world famous Portobello Road Market.

CHESTERTONS



Shirland Road

London, W9

- A charming two bedroom apartment positioned on second floor.
- Spanning approx. 595 square feet.
- Within close proximity of transport links.
- Bright and Spacious throughout.



Tenure: Leasehold 83 years 9 months

Service Charge: £1,945 pa

Ground Rent: £100 pa

Local Authority: Westminster

Council Tax Band: D

| Energy Efficiency Rating | | |
|---|---------|-------------------------|
| | Current | Potential |
| Very energy efficient - lower running costs | | |
| A (92-100) | | |
| B (81-91) | | |
| C (69-80) | 69 | 80 |
| D (55-68) | | |
| E (39-54) | | |
| F (21-38) | | |
| G (1-20) | | |
| Not energy efficient - higher running costs | | |
| England, Scotland & Wales | | EU Directive 2002/91/EC |

Chestertons Little Venice Sales

26 Clifton Road

Maida Vale

London

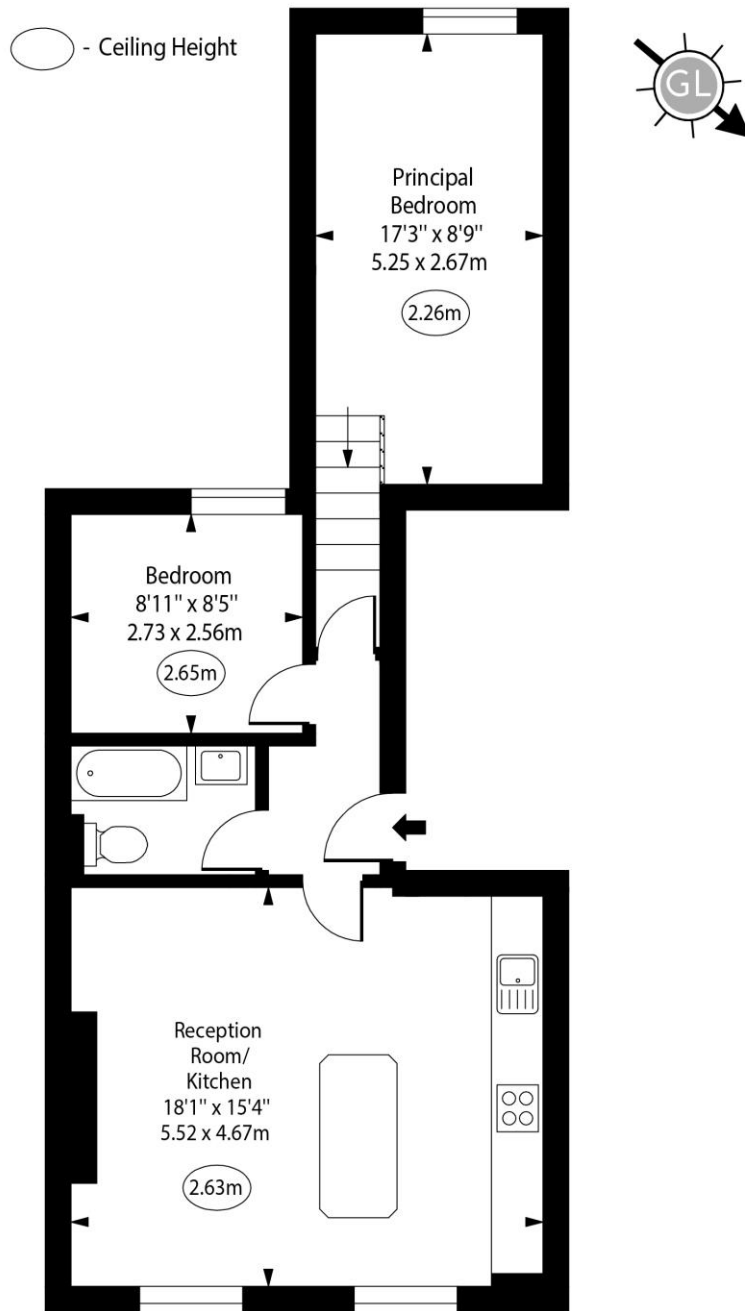
W9 1SX

littlevenice@chestertons.co.uk

020 7286 4632

chestertons.co.uk

Shirland Road, W9



Second Floor

Approx Gross Internal Area 595 Sq Ft - 55.28 Sq M

For Illustration Purposes Only - Not To Scale
www.goldlens.co.uk
 Ref. No. 026216R

