



Elm Court

Admiral Walk, W9

Asking Price £425,000

A beautifully presented one bedroom apartment positioned on the 5th floor of this modern portered block with allocated parking space. This popular development benefits from 24 hours security, allocated parking and access to the nearby Harbour Club.

Elm Court is part of the Carlton Gate development and well located for the amenities of both Notting Hill and Maida Vale.



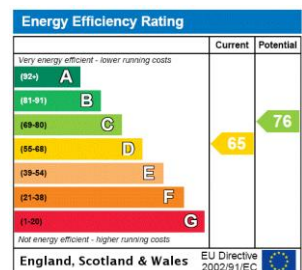
Elm Court

Admiral Walk, W9

- 24 hours security
- Allocated parking space
- Access to the nearby Harbour Club



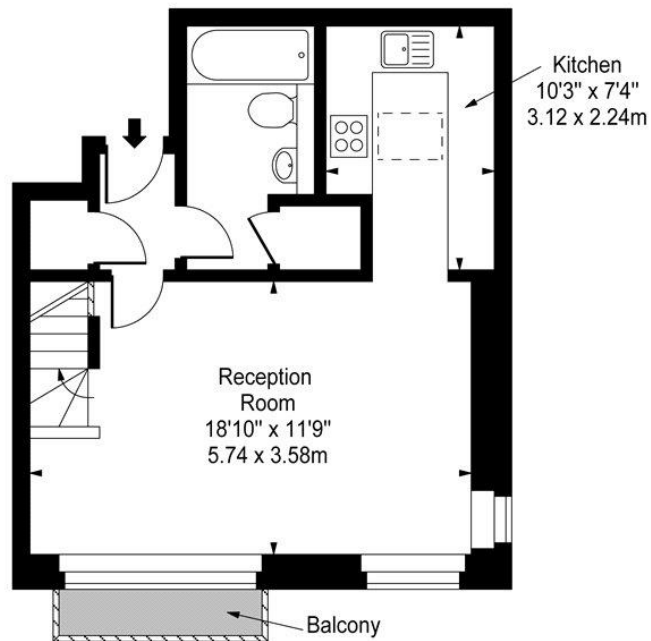
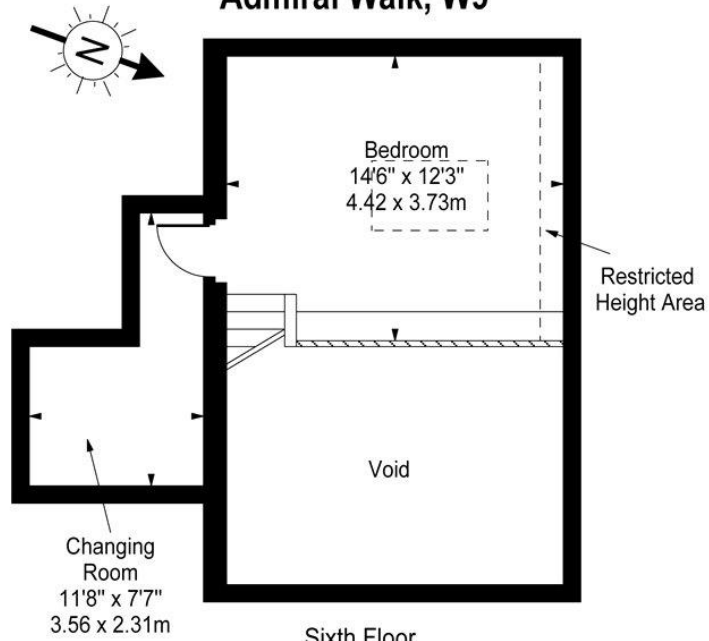
Tenure: Leasehold 970 years 2 months
Service Charge: £5201 + £1,973 reserve fund contribution
Ground Rent: £255 rising to £1,125
Local Authority: City of Westminster
Council Tax Band: E



Chestertons Little Venice Sales

26 Clifton Road
Maida Vale
London
W9 1SX
littlevenice@chestertons.co.uk
020 7286 4632
chestertons.co.uk

**Elm Court,
Admiral Walk, W9**



Approx Gross Internal Area 646 Sq Ft - 60.01 Sq M
(Including Restricted Height Area)
(Excluding Void)

For Illustration Purposes Only - Not To Scale
www.goldlens.co.uk
Ref. No. 003611A